

Product datasheet

Biotin Anti-CXCL1/GRO alpha antibody ab245860

2 Images

Overview

Product name	Biotin Anti-CXCL1/GRO alpha antibody
Description	Biotin Rabbit polyclonal to CXCL1/GRO alpha
Host species	Rabbit
Conjugation	Biotin

Tested Applications & Species

Application	Species
sELISA	Recombinant fragment
WB	Recombinant fragment

See all applications and species data

Immunogen Recombinant full length protein corresponding to Rat CXCL1/GRO alpha aa 1 to the C-terminus. Full-length mature chain lacking the signal peptide. Produced in E.coli.
Database link: [P14095](#)

[Run BLAST with](#)

[Run BLAST with](#)

Positive control WB: Recombinant rat CXCL1/GRO alpha protein. sELISA: Recombinant rat CXCL1/GRO alpha protein.

Properties

Form	Lyophilized:Reconstitute in sterile PBS with 0.1% BSA to 0.1 - 1.0 mg/ml.
Storage instructions	Shipped at 4°C. Store at +4°C short term (1-2 weeks). Upon delivery aliquot. Store at -20°C long term. Avoid freeze / thaw cycle. Store In the Dark.
Storage buffer	Constituent: PBS
Purity	Affinity purified
Clonality	Polyclonal
Isotype	IgG




Applications

The Abpromise guarantee

Our [Abpromise guarantee](#) covers the use of **ab245860** in the following tested applications.

The application notes include recommended starting dilutions; optimal dilutions/concentrations should be determined by the end user.

 Guaranteed Tested applications are guaranteed to work and covered by our Abpromise guarantee.	 Predicted Predicted to work for this combination of applications and species but not guaranteed.	 Incompatible Does not work for this combination of applications and species.
--	--	--

Application	Species
sELISA	 Recombinant fragment
WB	 Recombinant fragment
All applications	 Rat

Application	Abreviews	Notes
WB		Use a concentration of 0.1 - 0.2 µg/ml. Predicted molecular weight: 11 kDa.
Sandwich ELISA		Use a concentration of 0.25 - 1 µg/ml.

Target

Function

Has chemotactic activity for neutrophils. May play a role in inflammation and exerts its effects on endothelial cells in an autocrine fashion. In vitro, the processed forms GRO-alpha(4-73), GRO-alpha(5-73) and GRO-alpha(6-73) show a 30-fold higher chemotactic activity.

Sequence similarities

Belongs to the intercrine alpha (chemokine CxC) family.

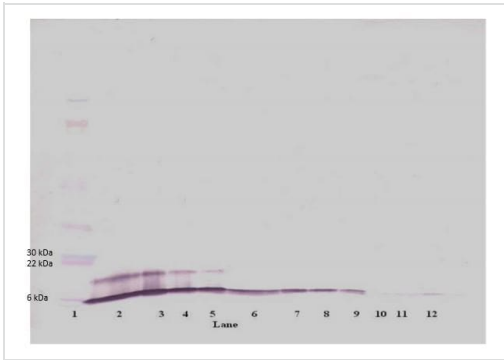
Post-translational modifications

N-terminal processed forms GRO-alpha(4-73), GRO-alpha(5-73) and GRO-alpha(6-73) are produced by proteolytic cleavage after secretion from peripheral blood monocytes.

Cellular localization

Secreted.

Images



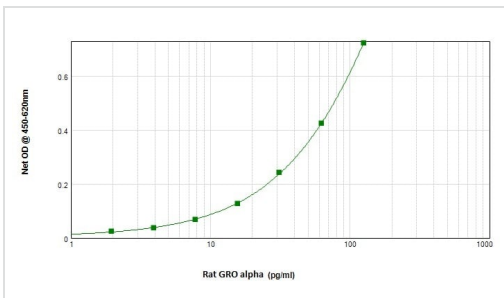
Western blot - Biotin Anti-CXCL1/GRO alpha antibody (ab245860)

To detect rat CXCL1/GRO alpha by Western Blot analysis ab245860 can be used at a concentration of 0.1 - 0.2 µg/ml.

When used in conjunction with compatible secondary reagents, the detection limit for recombinant rat GRO alpha is 1.5 - 3.0 ng/lane, under either reducing or non-reducing conditions.

Lane 1: Marker

Lanes 2-12: 250, 125, 62.5, 31.25, 15.625, 7.8, 3.9, 1.95, 0.975, 0.4875 and 0.24 ng recombinant rat CXCL1/GRO alpha, respectively.



Sandwich ELISA - Biotin Anti-CXCL1/GRO alpha antibody (ab245860)

To detect rat CXCL1/GRO alpha by sandwich ELISA (using 100 µl/well antibody solution) a concentration of 0.25 – 1.0 µg/ml of ab245860 is required.

This biotinylated polyclonal antibody, in conjunction with a capture antibody, allows the detection of at least 0.2 – 0.4 ng/well of recombinant rat CXCL1/GRO alpha.

Please note: All products are "FOR RESEARCH USE ONLY. NOT FOR USE IN DIAGNOSTIC PROCEDURES"

Our Abpromise to you: Quality guaranteed and expert technical support

- Replacement or refund for products not performing as stated on the datasheet
- Valid for 12 months from date of delivery
- Response to your inquiry within 24 hours
- We provide support in Chinese, English, French, German, Japanese and Spanish
- Extensive multi-media technical resources to help you
- We investigate all quality concerns to ensure our products perform to the highest standards

If the product does not perform as described on this datasheet, we will offer a refund or replacement. For full details of the Abpromise, please visit <https://www.abcam.com/abpromise> or contact our technical team.

Terms and conditions

- Guarantee only valid for products bought direct from Abcam or one of our authorized distributors