

## Product datasheet

# Biotin Anti-Interferon gamma antibody ab271249

[2 Images](#)

### Overview

---

<b>Product name</b>	Biotin Anti-Interferon gamma antibody
<b>Description</b>	Biotin Rabbit polyclonal to Interferon gamma
<b>Host species</b>	Rabbit
<b>Conjugation</b>	Biotin
<b>Tested applications</b>	<b>Suitable for:</b> WB, Sandwich ELISA
<b>Species reactivity</b>	<b>Reacts with:</b> Human, Recombinant fragment
<b>Immunogen</b>	Synthetic peptide corresponding to Human Interferon gamma aa 1 to the C-terminus. Database link: <a href="#">P01579-1</a>

 [Run BLAST with](#)

 [Run BLAST with](#)

### General notes

The Life Science industry has been in the grips of a reproducibility crisis for a number of years. Abcam is leading the way in addressing this with our range of recombinant monoclonal antibodies and knockout edited cell lines for gold-standard validation. Please check that this product meets your needs before purchasing.

If you have any questions, special requirements or concerns, please send us an inquiry and/or contact our Support team ahead of purchase. Recommended alternatives for this product can be found below, along with publications, customer reviews and Q&As

### Properties

---

<b>Form</b>	Lyophilized:Reconstitute in sterile PBS with 0.1% BSA to 0.1 - 1.0 mg/ml.
<b>Storage instructions</b>	Shipped at 4°C. Store at +4°C short term (1-2 weeks). Upon delivery aliquot. Store at -20°C long term. Avoid freeze / thaw cycle. Store In the Dark.
<b>Storage buffer</b>	Constituents: PBS, 0.1% BSA
<b>Purity</b>	Affinity purified
<b>Clonality</b>	Polyclonal
<b>Isotype</b>	IgG

### Applications

---

**The Abpromise guarantee** Our [Abpromise guarantee](#) covers the use of ab271249 in the following tested applications.

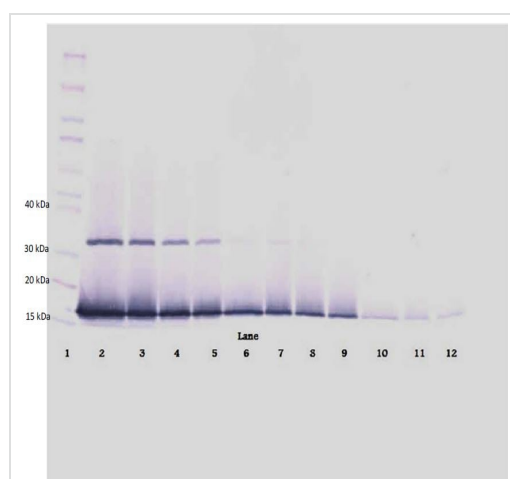
The application notes include recommended starting dilutions; optimal dilutions/concentrations should be determined by the end user.

Application	Abreviews	Notes
WB		Use a concentration of 0.1 - 0.2 µg/ml. Predicted molecular weight: 19 kDa.
Sandwich ELISA		Use at an assay dependent concentration.

## Target

<b>Function</b>	Produced by lymphocytes activated by specific antigens or mitogens. IFN-gamma, in addition to having antiviral activity, has important immunoregulatory functions. It is a potent activator of macrophages, it has antiproliferative effects on transformed cells and it can potentiate the antiviral and antitumor effects of the type I interferons.
<b>Tissue specificity</b>	Released primarily from activated T lymphocytes.
<b>Involvement in disease</b>	In Caucasians, genetic variation in IFNG is associated with the risk of aplastic anemia (AA) [MIM:609135]. AA is a rare disease in which the reduction of the circulating blood cells results from damage to the stem cell pool in bone marrow. In most patients, the stem cell lesion is caused by an autoimmune attack. T-lymphocytes, activated by an endogenous or exogenous, and most often unknown antigenic stimulus, secrete cytokines, including IFN-gamma, which would in turn be able to suppress hematopoiesis.
<b>Sequence similarities</b>	Belongs to the type II (or gamma) interferon family.
<b>Post-translational modifications</b>	Proteolytic processing produces C-terminal heterogeneity, with proteins ending alternatively at Gly-150, Met-157 or Gly-161.
<b>Cellular localization</b>	Secreted.

## Images



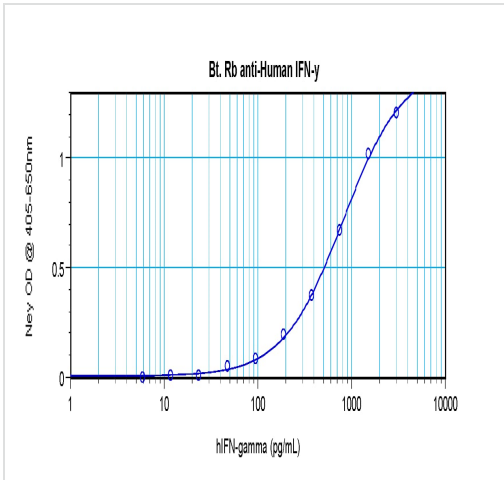
Western blot - Biotin Anti-Interferon gamma antibody (ab271249)

Western blot analysis of varying levels of Recombinant human INF-γ protein using ab271249 at 0.1 µg/ml.

Used in conjunction with compatible secondary reagents the detection limit for recombinant INF-γ is 1.5 - 3.0 ng/lane, under either reducing or non-reducing conditions.

Lane	ng/lane
1	Marker
2	250
3	125
4	62.5
5	31.25
6	15.625
7	7.8
8	3.9
9	1.95

10	0.975
11	0.4875
12	0.24



Sandwich ELISA - Biotin Anti-Interferon gamma antibody (ab271249)

Human IFN- $\gamma$  was detected by sandwich ELISA (using 100 $\mu$ l/well) using a concentration of 0.25-1.0  $\mu$ g/ml of ab271249. This antibody in conjunction with an appropriate capture antibody, allows the detection of at least 0.2 – 0.4 ng/well of recombinant Human IFN- $\gamma$  protein.

**Please note:** All products are "FOR RESEARCH USE ONLY. NOT FOR USE IN DIAGNOSTIC PROCEDURES"

### Our Abpromise to you: Quality guaranteed and expert technical support

- Replacement or refund for products not performing as stated on the datasheet
- Valid for 12 months from date of delivery
- Response to your inquiry within 24 hours
- We provide support in Chinese, English, French, German, Japanese and Spanish
- Extensive multi-media technical resources to help you
- We investigate all quality concerns to ensure our products perform to the highest standards

If the product does not perform as described on this datasheet, we will offer a refund or replacement. For full details of the Abpromise, please visit <https://www.abcam.com/abpromise> or contact our technical team.

### Terms and conditions

- Guarantee only valid for products bought direct from Abcam or one of our authorized distributors