

Product datasheet

Biotin Anti-Leptin antibody ab271266

2 Images

Overview

<b>Product name</b>	Biotin Anti-Leptin antibody
<b>Description</b>	Biotin Rabbit polyclonal to Leptin
<b>Host species</b>	Rabbit
<b>Conjugation</b>	Biotin
<b>Tested applications</b>	<b>Suitable for:</b> ELISA, WB
<b>Species reactivity</b>	<b>Reacts with:</b> Recombinant fragment
<b>Immunogen</b>	Recombinant fragment corresponding to Mouse Leptin aa 1 to the C-terminus. Database link: <a href="#">P41160</a>

 [Run BLAST with](#)

 [Run BLAST with](#)

General notes

The Life Science industry has been in the grips of a reproducibility crisis for a number of years. Abcam is leading the way in addressing this with our range of recombinant monoclonal antibodies and knockout edited cell lines for gold-standard validation. Please check that this product meets your needs before purchasing.

If you have any questions, special requirements or concerns, please send us an inquiry and/or contact our Support team ahead of purchase. Recommended alternatives for this product can be found below, along with publications, customer reviews and Q&As

Properties

<b>Form</b>	Lyophilized:Reconstitute in sterile PBS with 0.1% BSA to 0.1 - 1.0 mg/ml.
<b>Storage instructions</b>	Shipped at 4°C. Store at +4°C short term (1-2 weeks). Upon delivery aliquot. Store at -20°C long term. Avoid freeze / thaw cycle. Store In the Dark.
<b>Storage buffer</b>	Constituents: PBS, 0.1% BSA
<b>Purity</b>	Affinity purified
<b>Clonality</b>	Polyclonal
<b>Isotype</b>	IgG

Applications

**The Abpromise guarantee** Our [Abpromise guarantee](#) covers the use of ab271266 in the following tested applications.

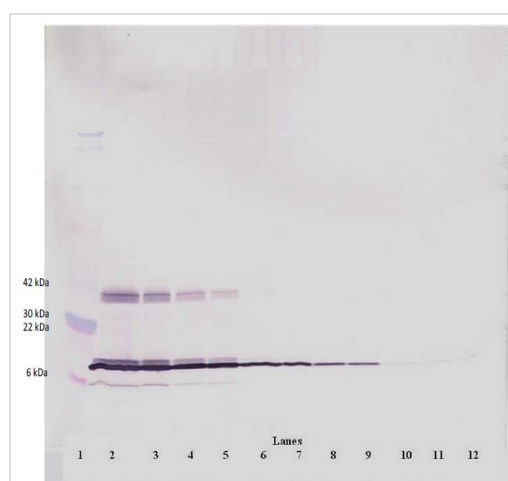
The application notes include recommended starting dilutions; optimal dilutions/concentrations should be determined by the end user.

Application	Abreviews	Notes
<b>ELISA</b>		Use a concentration of 0.25 - 1 µg/ml. Mouse Leptin was detected by sandwich ELISA (using 100µl/well) using a concentration of 0.25-1.0 µg/ml of ab271266. This antibody in conjunction with an appropriate capture antibody, allows the detection of at least 0.2 – 0.4 ng/well of recombinant mLeptin protein.
<b>WB</b>		Use at an assay dependent concentration.

## Target

<b>Function</b>	May function as part of a signaling pathway that acts to regulate the size of the body fat depot. An increase in the level of LEP may act directly or indirectly on the CNS to inhibit food intake and/or regulate energy expenditure as part of a homeostatic mechanism to maintain constancy of the adipose mass.
<b>Involvement in disease</b>	Defects in LEP may be a cause of obesity (OBESITY) [MIM:601665]. It is a condition characterized by an increase of body weight beyond the limitation of skeletal and physical requirements, as the result of excessive accumulation of body fat.
<b>Sequence similarities</b>	Belongs to the leptin family.
<b>Cellular localization</b>	Secreted.

## Images

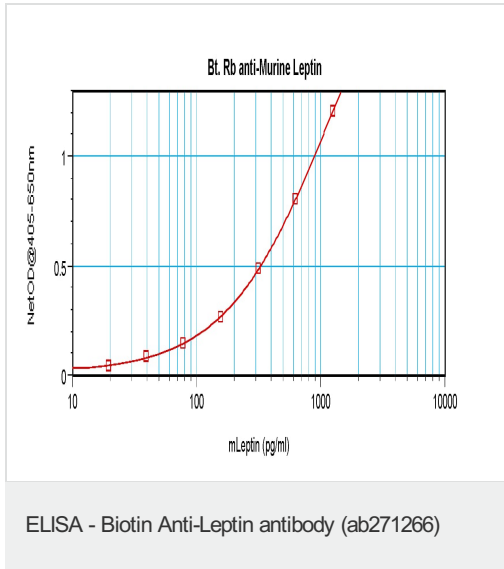


Western blot - Biotin Anti-Leptin antibody  
(ab271266)

Western blot analysis of varying levels of Recombinant murine Leptin protein using ab271266 at 0.1 µg/ml.

Used in conjunction with compatible secondary reagents the detection limit for recombinant Leptin is 1.5 - 3.0 ng/lane, under either reducing or non-reducing conditions.

Lane	ng/lane
1	Marker
2	250
3	125
4	62.5
5	31.25
6	15.625
7	7.8
8	3.9
9	1.95
10	0.975
11	0.4875
12	0.24



Human Leptin was detected by sandwich ELISA (using 100 µl/well) using a concentration of 0.25-1.0 µg/ml of ab271266. This antibody in conjunction with an appropriate capture antibody, allows the detection of at least 0.2 – 0.4 ng/well of recombinant Leptin protein.

**Please note:** All products are "FOR RESEARCH USE ONLY. NOT FOR USE IN DIAGNOSTIC PROCEDURES"

### Our Abpromise to you: Quality guaranteed and expert technical support

- Replacement or refund for products not performing as stated on the datasheet
- Valid for 12 months from date of delivery
- Response to your inquiry within 24 hours
- We provide support in Chinese, English, French, German, Japanese and Spanish
- Extensive multi-media technical resources to help you
- We investigate all quality concerns to ensure our products perform to the highest standards

If the product does not perform as described on this datasheet, we will offer a refund or replacement. For full details of the Abpromise, please visit <https://www.abcam.com/abpromise> or contact our technical team.

### Terms and conditions

- Guarantee only valid for products bought direct from Abcam or one of our authorized distributors