

Product datasheet

Biotin Anti-Listeria monocytogenes antibody ab20766

★★★★★ 2 Abreviews 1 References 2 Images

Overview

Product name	Biotin Anti-Listeria monocytogenes antibody
Description	Biotin Rabbit polyclonal to Listeria monocytogenes
Host species	Rabbit
Conjugation	Biotin
Tested applications	Suitable for: Flow Cyt, ELISA, IHC-Fr
Species reactivity	Reacts with: Other species
Immunogen	Tissue, cells or virus corresponding to Listeria monocytogenes Listeria monocytogenes.
General notes	IgG fraction covalently coupled with the N-Hydroxysuccinimide ester of biotin under mild conditions to give a high degree of substitution.

Properties

Form	Liquid
Storage instructions	Shipped at 4°C. Store at +4°C short term (1-2 weeks). Store at -20°C or -80°C. Avoid freeze / thaw cycle.
Storage buffer	Preservative: 0.1% Sodium azide Constituent: 0.0268% PBS
Purity	IgG fraction
Clonality	Polyclonal
Isotype	IgG

Applications

The Abpromise guarantee Our [Abpromise guarantee](#) covers the use of **ab20766** in the following tested applications. The application notes include recommended starting dilutions; optimal dilutions/concentrations should be determined by the end user.

Application	Abreviews	Notes

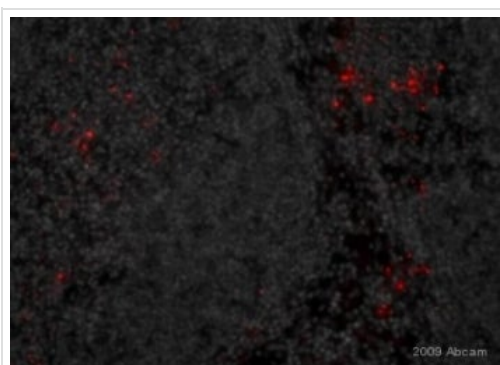
Application	Abreviews	Notes
Flow Cyt	★★★★★ (1)	Use at an assay dependent concentration. ab200208 - Rabbit polyclonal IgG, is suitable for use as an isotype control with this antibody.
ELISA		1/1000.
IHC-Fr	★★★★★ (1)	1/250.

Target

Relevance

The genus *Listeria* comprises six species: *L. monocytogenes*, *L. innocua*, *L. welshimeri*, *L. seeligeri*, *L. ivanovii* and *L. grayi*. *Listeria monocytogenes*, the most commonly isolated pathogenic member, is associated with a wide spectrum of human and animal diseases. In the smear from the original tissue, *L. monocytogenes* may appear as gram-positive coccobacilli that may be confused with *Streptococcus agalactiae* (group B), enterococci, or *Corynebacterium* spp. *Listeria* is differentiated from streptococci by a positive catalase test. *L. monocytogenes* is the only species of the genus *Listeria* that has been clearly documented as a pathogen for humans. The forms of disease caused by this organism are myriad and age-related. The most common clinical manifestations are meningitis and septicemia. *Listeria monocytogenes*, a food-borne intracellular animal and human pathogen, interacts with infected host cells both prior to entry and during the intracellular phase of infection.

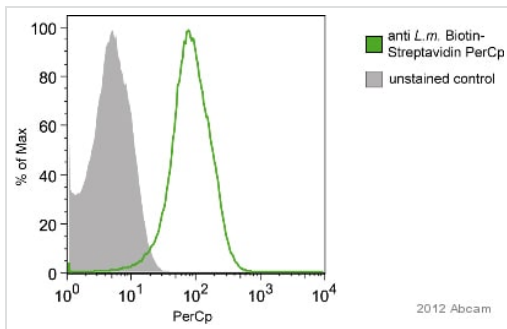
Images



Immunohistochemistry (Frozen sections) - Biotin
Anti-*Listeria monocytogenes* antibody ([ab20766](#))

This image is a courtesy of Anonymous Abreview

[ab20766](#) staining *Listeria monocytogenes* in mouse spleen tissue section from a mice infected with 1×10^6 *L. monocytogenes* for 24h by Immunohistochemistry (Frozen sections). Tissue samples were fixed with 4% paraformaldehyde for 2 hours at RT and then it was incubated ON in 30% Sucrose in PBS at 4°C, froze away in OCT/Tissuetek. The tissue samples were blocked with 1% 1:20 Cd16/32 at 20°C for 30 minutes. The sample was incubated with primary antibody (1/250) in PBS at 20°C for 1 hour. For detection Streptavidin-Cy3 was used at dilution at 1:500 in PBS for 30 min at 20°C.



Flow Cytometry - Biotin Anti-Listeria
monocytogenes antibody (ab20766)

This image is courtesy of an anonymous Abreview

Flow cytometry analysis of *Listeria monocytogenes* in culture, staining *Listeria monocytogenes* with ab20766.

The sample was incubated with the primary antibody (1/300 in PBS) for 30 minutes at 4°C. A Streptavidin-Peridinin Chlorophyll-a Protein conjugated with PerCP was used for detection.

Gating Strategy: FSC/SSC

Please note: All products are "FOR RESEARCH USE ONLY. NOT FOR USE IN DIAGNOSTIC PROCEDURES"

Our Abpromise to you: Quality guaranteed and expert technical support

- Replacement or refund for products not performing as stated on the datasheet
- Valid for 12 months from date of delivery
- Response to your inquiry within 24 hours
- We provide support in Chinese, English, French, German, Japanese and Spanish
- Extensive multi-media technical resources to help you
- We investigate all quality concerns to ensure our products perform to the highest standards

If the product does not perform as described on this datasheet, we will offer a refund or replacement. For full details of the Abpromise, please visit <https://www.abcam.com/abpromise> or contact our technical team.

Terms and conditions

- Guarantee only valid for products bought direct from Abcam or one of our authorized distributors