

Product datasheet

Biotin Anti-MDC antibody ab271215

2 Images

Overview

<b>Product name</b>	Biotin Anti-MDC antibody
<b>Description</b>	Biotin Rabbit polyclonal to MDC
<b>Host species</b>	Rabbit
<b>Conjugation</b>	Biotin
<b>Tested applications</b>	<b>Suitable for:</b> ELISA, WB
<b>Species reactivity</b>	<b>Reacts with:</b> Recombinant fragment
<b>Immunogen</b>	Recombinant full length protein corresponding to Mouse MDC aa 1-100. Database link: <a href="#">O88430</a>

 [Run BLAST with](#)

 [Run BLAST with](#)

General notes

The Life Science industry has been in the grips of a reproducibility crisis for a number of years. Abcam is leading the way in addressing this with our range of recombinant monoclonal antibodies and knockout edited cell lines for gold-standard validation. Please check that this product meets your needs before purchasing.

If you have any questions, special requirements or concerns, please send us an inquiry and/or contact our Support team ahead of purchase. Recommended alternatives for this product can be found below, along with publications, customer reviews and Q&As

Properties

<b>Form</b>	Lyophilized:Reconstitute in sterile PBS with 0.1% BSA to 0.1 - 1.0 mg/ml.
<b>Storage instructions</b>	Shipped at 4°C. Store at +4°C short term (1-2 weeks). Upon delivery aliquot. Store at -20°C long term. Avoid freeze / thaw cycle. Store In the Dark.
<b>Storage buffer</b>	Constituents: PBS, 0.1% BSA
<b>Purity</b>	Affinity purified
<b>Clonality</b>	Polyclonal
<b>Isotype</b>	IgG

Applications

**The Abpromise guarantee** Our [Abpromise guarantee](#) covers the use of ab271215 in the following tested applications.

The application notes include recommended starting dilutions; optimal dilutions/concentrations should be determined by the end user.

Application	Abreviews	Notes
ELISA		Use a concentration of 0.25 - 1 µg/ml.
WB		Use a concentration of 0.1 - 0.2 µg/ml. Predicted molecular weight: 11 kDa.

## Target

### Function

May play a role in the trafficking of activated/effector T-lymphocytes to inflammatory sites and other aspects of activated T-lymphocyte physiology. Chemotactic for monocytes, dendritic cells and natural killer cells. Mild chemoattractant for primary activated T-lymphocytes and a potent chemoattractant for chronically activated T-lymphocytes but has no chemoattractant activity for neutrophils, eosinophils, and resting T-lymphocytes. Binds to CCR4. Processed forms MDC(3-69), MDC(5-69) and MDC(7-69) seem not be active.

### Tissue specificity

Highly expressed in macrophage and in monocyte-derived dendritic cells, and thymus. Also found in lymph node, appendix, activated monocytes, resting and activated macrophages. Lower expression in lung and spleen. Very weak expression in small intestine. In lymph node expressed in a mature subset of Langerhans' cells (CD1a+ and CD83+). Expressed in Langerhans' cell histiocytosis but not in dermatopathic lymphadenopathy. Expressed in atopic dermatitis, allergic contact dermatitis skin, and psoriasis, in both the epidermis and dermis.

### Sequence similarities

Belongs to the intercrine beta (chemokine CC) family.

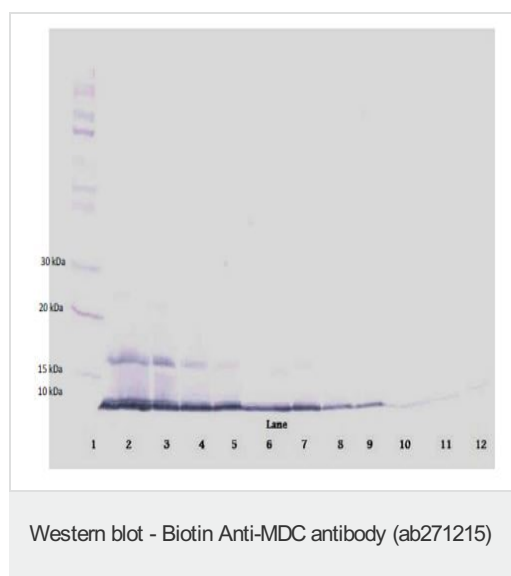
### Post-translational modifications

The N-terminal processed forms MDC(3-69), MDC(5-69) and MDC(7-69) are produced by proteolytic cleavage after secretion from monocyte derived dendrocytes.

### Cellular localization

Secreted.

## Images

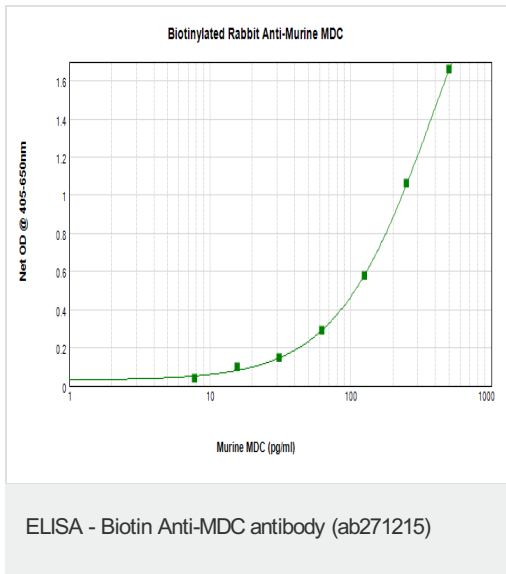


Western blot analysis of varying levels of Recombinant mouse MDC protein using ab271215 at 0.2 µg/ml.

Used in conjunction with compatible secondary reagents the detection limit for recombinant MDC is 1.5 - 3.0 ng/lane, under either reducing or non-reducing conditions.

Lane	ng/lane
1	Marker
2	250
3	125
4	62.5
5	31.25
6	15.625
7	7.8
8	3.9

9	1.95
10	0.975
11	0.4875
12	0.24



MDC was detected by sandwich ELISA (using 100µl/well) using a concentration of 0.25-1.0 µg/ml of ab271215. This antibody in conjunction with an appropriate capture antibody, allows the detection of at least 1.5 - 3.0 ng/lane of recombinant MDC protein.

**Please note:** All products are "FOR RESEARCH USE ONLY. NOT FOR USE IN DIAGNOSTIC PROCEDURES"

### Our Abpromise to you: Quality guaranteed and expert technical support

- Replacement or refund for products not performing as stated on the datasheet
- Valid for 12 months from date of delivery
- Response to your inquiry within 24 hours
- We provide support in Chinese, English, French, German, Japanese and Spanish
- Extensive multi-media technical resources to help you
- We investigate all quality concerns to ensure our products perform to the highest standards

If the product does not perform as described on this datasheet, we will offer a refund or replacement. For full details of the Abpromise, please visit <https://www.abcam.com/abpromise> or contact our technical team.

### Terms and conditions

- Guarantee only valid for products bought direct from Abcam or one of our authorized distributors