

## Product datasheet

# Biotin Anti-TLR2 antibody [TL2.1] ab9101

8 References 3 Images

### Overview

---

<b>Product name</b>	Biotin Anti-TLR2 antibody [TL2.1]
<b>Description</b>	Biotin Mouse monoclonal [TL2.1] to TLR2
<b>Host species</b>	Mouse
<b>Conjugation</b>	Biotin
<b>Tested applications</b>	<b>Suitable for:</b> IHC-Fr, Flow Cyt, IHC-P
<b>Species reactivity</b>	<b>Reacts with:</b> Human
<b>Immunogen</b>	Recombinant human TLR2 produced by the CHO/CD14 reporter cell line.
<b>General notes</b>	<p>Ab9101 is a TLR2 function blocking antibody that is useful for studies on the role of TLR2 as a pattern recognition receptor in microbial products induced cytokine production by TLR2 bearing cells such as human peripheral blood mononuclear cells.</p> <p>The Life Science industry has been in the grips of a reproducibility crisis for a number of years. Abcam is leading the way in addressing this with our range of recombinant monoclonal antibodies and knockout edited cell lines for gold-standard validation. Please check that this product meets your needs before purchasing.</p> <p>If you have any questions, special requirements or concerns, please send us an inquiry and/or contact our Support team ahead of purchase. Recommended alternatives for this product can be found below, along with publications, customer reviews and Q&amp;As</p>

### Properties

---

<b>Form</b>	Liquid
<b>Storage instructions</b>	Shipped at 4°C. Store at +4°C short term (1-2 weeks). Store at -20°C or -80°C. Avoid freeze / thaw cycle.
<b>Storage buffer</b>	Preservative: 0.02% Sodium azide Constituents: PBS, 1% BSA
<b>Purity</b>	Protein G purified
<b>Purification notes</b>	0.2 µm filtered
<b>Primary antibody notes</b>	Ab9101 is a TLR2 function blocking antibody that is useful for studies on the role of TLR2 as a pattern recognition receptor in microbial products induced cytokine production by TLR2 bearing cells such as human peripheral blood mononuclear cells.

<b>Clonality</b>	Monoclonal
<b>Clone number</b>	TL2.1
<b>Isotype</b>	IgG2a

## Applications

**The Abpromise guarantee** Our [Abpromise guarantee](#) covers the use of ab9101 in the following tested applications.

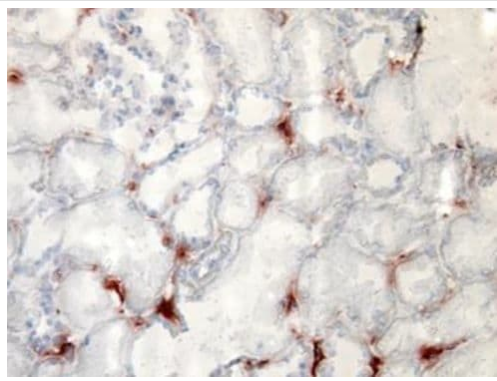
The application notes include recommended starting dilutions; optimal dilutions/concentrations should be determined by the end user.

Application	Abreviews	Notes
IHC-Fr		Use at an assay dependent concentration.
Flow Cyt		Use at an assay dependent concentration. <a href="#">ab97679</a> - Mouse monoclonal IgG2a, is suitable for use as an isotype control with this antibody.
IHC-P		Use at an assay dependent concentration.

## Target

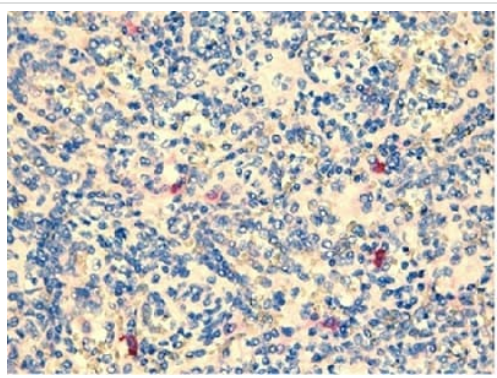
<b>Function</b>	Cooperates with LY96 to mediate the innate immune response to bacterial lipoproteins and other microbial cell wall components. Cooperates with TLR1 to mediate the innate immune response to bacterial lipoproteins or lipopeptides. Acts via MYD88 and TRAF6, leading to NF-kappa-B activation, cytokine secretion and the inflammatory response. May also promote apoptosis in response to lipoproteins. Recognizes mycoplasmal macrophage-activating lipopeptide-2kD (MALP-2), soluble tuberculosis factor (STF), phenol-soluble modulins (PSM) and B.burgdorferi outer surface protein A lipoprotein (OspA-L) cooperatively with TLR6.
<b>Tissue specificity</b>	Highly expressed in peripheral blood leukocytes, in particular in monocytes, in bone marrow, lymph node and in spleen. Also detected in lung and in fetal liver. Levels are low in other tissues.
<b>Sequence similarities</b>	Belongs to the Toll-like receptor family. Contains 14 LRR (leucine-rich) repeats. Contains 1 TIR domain.
<b>Post-translational modifications</b>	Glycosylation of Asn-442 is critical for secretion of the N-terminal ectodomain of TLR2.
<b>Cellular localization</b>	Membrane.

## Images



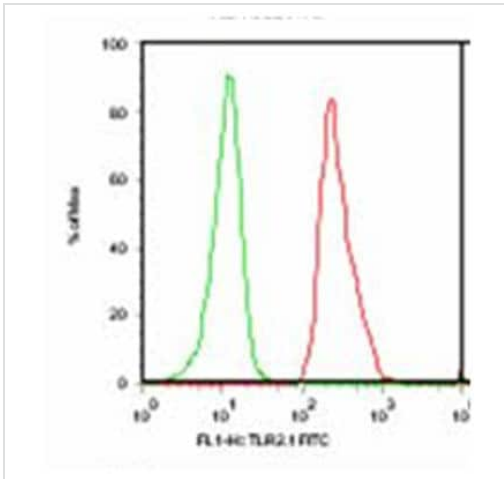
Immunohistochemistry analysis of human brain frozen tissue tissue labelling TLR2 with ab9101

Immunohistochemistry (Frozen sections) - Biotin Anti-TLR2 antibody [TL2.1] (ab9101)



Immunohistochemical analysis of human TLR2 in paraffin-embedded human spleen tissue.

Immunohistochemistry (Formalin/PFA-fixed paraffin-embedded sections) - Biotin Anti-TLR2 antibody [TL2.1] (ab9101)



TLR2 staining on human peripheral blood mononuclear cells by using ab9101. Green: CD3+-cells; Red: CD14+ cells.

Flow Cytometry - Biotin Anti-TLR2 antibody [TL2.1] (ab9101)

**Please note:** All products are "FOR RESEARCH USE ONLY. NOT FOR USE IN DIAGNOSTIC PROCEDURES"

### Our Abpromise to you: Quality guaranteed and expert technical support

- Replacement or refund for products not performing as stated on the datasheet
- Valid for 12 months from date of delivery
- Response to your inquiry within 24 hours
- We provide support in Chinese, English, French, German, Japanese and Spanish
- Extensive multi-media technical resources to help you
- We investigate all quality concerns to ensure our products perform to the highest standards

If the product does not perform as described on this datasheet, we will offer a refund or replacement. For full details of the Abpromise, please visit <https://www.abcam.com/abpromise> or contact our technical team.

### Terms and conditions

- Guarantee only valid for products bought direct from Abcam or one of our authorized distributors