

## Product datasheet

# Anti-Blooms Syndrome Protein Blm (phospho T99) antibody ab62206

[1 Abreviews](#) [2 References](#) [3 Images](#)

### Overview

---

<b>Product name</b>	Anti-Blooms Syndrome Protein Blm (phospho T99) antibody
<b>Description</b>	Rabbit polyclonal to Blooms Syndrome Protein Blm (phospho T99)
<b>Host species</b>	Rabbit
<b>Specificity</b>	ab62206 detects endogenous levels of Bloom Syndrome Protein Blm only when phosphorylated at threonine 99.
<b>Tested applications</b>	<b>Suitable for:</b> WB, IHC-P, ICC/IF
<b>Species reactivity</b>	<b>Reacts with:</b> Human
<b>Immunogen</b>	Synthetic peptide corresponding to Human Blooms Syndrome Protein Blm aa 50-150 (phospho T99). Database link: <a href="#">P54132</a>
<b>Positive control</b>	HeLa, HepG2 cells
<b>General notes</b>	<p>The Life Science industry has been in the grips of a reproducibility crisis for a number of years. Abcam is leading the way in addressing this with our range of recombinant monoclonal antibodies and knockout edited cell lines for gold-standard validation. Please check that this product meets your needs before purchasing.</p> <p>If you have any questions, special requirements or concerns, please send us an inquiry and/or contact our Support team ahead of purchase. Recommended alternatives for this product can be found below, along with publications, customer reviews and Q&amp;As</p>

### Properties

---

<b>Form</b>	Liquid
<b>Storage instructions</b>	Shipped at 4°C. Store at -20°C. Stable for 12 months at -20°C.
<b>Storage buffer</b>	pH: 7.40 Preservative: 0.02% Sodium azide Constituents: PBS, 50% Glycerol (glycerin, glycerine), 0.87% Sodium chloride
<b>Purity</b>	Immunogen affinity purified
<b>Purification notes</b>	ab62206 was affinity-purified from rabbit antiserum by affinity-chromatography using epitope-specific phosphopeptide. The antibody against non-phosphopeptide was removed by

chromatography using non-phosphopeptide corresponding to the phosphorylation site.

<b>Clonality</b>	Polyclonal
<b>Isotype</b>	IgG

## Applications

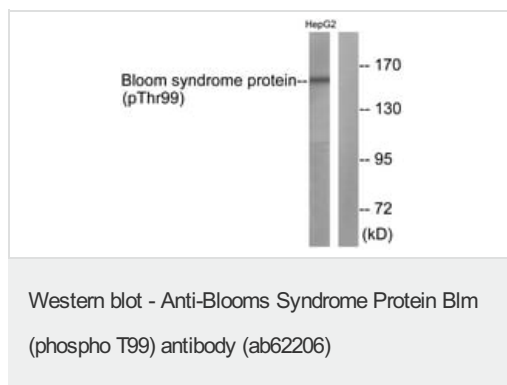
**The Abpromise guarantee** Our [Abpromise guarantee](#) covers the use of ab62206 in the following tested applications. The application notes include recommended starting dilutions; optimal dilutions/concentrations should be determined by the end user.

Application	Abreviews	Notes
WB		1/500 - 1/1000. Predicted molecular weight: 159 kDa.
IHC-P		1/50 - 1/100.
ICC/IF		1/100 - 1/500.

## Target

<b>Function</b>	Participates in DNA replication and repair. Exhibits a magnesium-dependent ATP-dependent DNA-helicase activity that unwinds single- and double-stranded DNA in a 3'-5' direction.
<b>Involvement in disease</b>	Defects in BLM are the cause of Bloom syndrome (BLM) [MIM:210900]. BLM is an autosomal recessive disorder characterized by proportionate pre- and postnatal growth deficiency, sun-sensitive telangiectatic hypo- and hyperpigmented skin, predisposition to malignancy, and chromosomal instability.
<b>Sequence similarities</b>	Belongs to the helicase family. RecQ subfamily. Contains 1 helicase ATP-binding domain. Contains 1 helicase C-terminal domain. Contains 1 HRDC domain.
<b>Post-translational modifications</b>	Phosphorylated in response to DNA damage. Phosphorylation requires the FANCA-FANCC-FANCE-FANCF-FANCG protein complex, as well as the presence of RMI1.
<b>Cellular localization</b>	Nucleus.

## Images



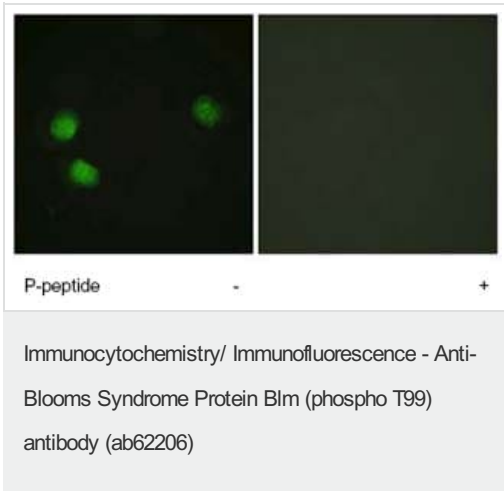
**All lanes** : Anti-Blooms Syndrome Protein Blm (phospho T99) antibody (ab62206)

**Lane 1** : HepG2 cell lysate

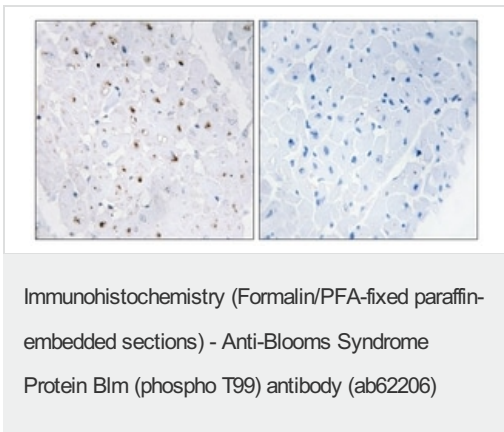
**Lane 2** : HepG2 cell lysate with blocking peptide

**Predicted band size:** 159 kDa

**Observed band size:** 159 kDa



Immunofluorescence analysis of HeLa cells using Blooms Syndrome Protein Blm (phospho T99) antibody (ab62206) at 1/500 dilution, in the presence (right) or absence (left) of immunising phosphopeptide.



ab62206 staining Blooms Syndrome Protein Blm (phospho T99) in Human heart by Immunohistochemistry (Formalin/PFA-fixed paraffin-embedded sections). The picture on the right is treated with the synthesized peptide.

**Please note:** All products are "FOR RESEARCH USE ONLY. NOT FOR USE IN DIAGNOSTIC PROCEDURES"

### Our Abpromise to you: Quality guaranteed and expert technical support

- Replacement or refund for products not performing as stated on the datasheet
- Valid for 12 months from date of delivery
- Response to your inquiry within 24 hours
- We provide support in Chinese, English, French, German, Japanese and Spanish
- Extensive multi-media technical resources to help you
- We investigate all quality concerns to ensure our products perform to the highest standards

If the product does not perform as described on this datasheet, we will offer a refund or replacement. For full details of the Abpromise, please visit <https://www.abcam.com/abpromise> or contact our technical team.

### Terms and conditions

- Guarantee only valid for products bought direct from Abcam or one of our authorized distributors