


Product datasheet

Anti-Bmi1 antibody ab38295

★★★★★ 5 Abreviews 22 References 4 Images

Overview

Product name	Anti-Bmi1 antibody
Description	Rabbit polyclonal to Bmi1
Host species	Rabbit
Tested applications	Suitable for: ICC/IF, IHC-P, WB, IHC-Fr, IP
Species reactivity	Reacts with: Mouse, Rat, Human Predicted to work with: Chicken, Cow 
Immunogen	Synthetic peptide corresponding to 15 amino acids near the center of human Bmi1.
Positive control	WB: K562 cell lysate. ICC/IF: Rat fibroblast cells; K562 cells. IHC-Fr: Rat brain tissue. IHC-P: Rat acute rheumatic heart disease (RHD) tissue.

Properties

Form	Liquid
Storage instructions	Shipped at 4°C. Store at +4°C.
Storage buffer	Preservative: 0.02% Sodium azide Constituent: PBS
Purity	Immunogen affinity purified
Clonality	Polyclonal
Isotype	IgG

Applications

Our [Abpromise guarantee](#) covers the use of **ab38295** in the following tested applications.

The application notes include recommended starting dilutions; optimal dilutions/concentrations should be determined by the end user.

Application	Abreviews	Notes
ICC/IF		Use a concentration of 10 µg/ml.
IHC-P		Use at an assay dependent concentration. PubMed: 20083111

Application	Abreviews	Notes
WB	★★★★☆	Use a concentration of 0.5 - 1 µg/ml. Predicted molecular weight: 37 kDa. Can be blocked with Human Bmi1 peptide (ab39733) .
IHC-Fr	★★★★☆	1/300.
IP	★★★★☆	1/2000.

Target

Function

Component of the Polycomb group (PcG) multiprotein PRC1 complex, a complex required to maintain the transcriptionally repressive state of many genes, including Hox genes, throughout development. PcG PRC1 complex acts via chromatin remodeling and modification of histones; it mediates monoubiquitination of histone H2A 'Lys-119', rendering chromatin heritably changed in its expressibility. In the PRC1 complex, it is required to stimulate the E3 ubiquitin-protein ligase activity of RNF2/RING2.

Sequence similarities

Contains 1 RING-type zinc finger.

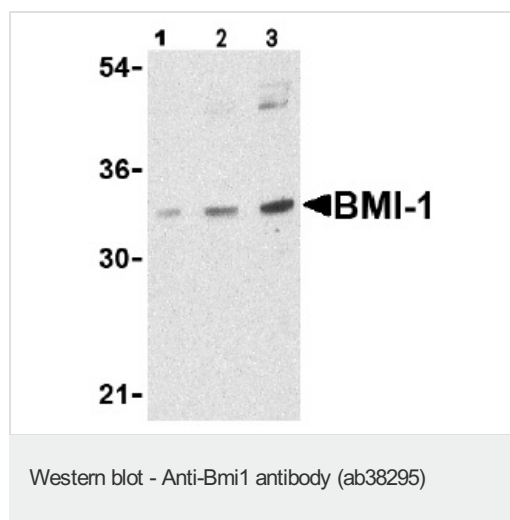
Post-translational modifications

Monoubiquitinated (By similarity). May be polyubiquitinated; which does not lead to proteasomal degradation.

Cellular localization

Nucleus. Cytoplasm.

Images



Lane 1 : Anti-Bmi1 antibody (ab38295) at 0.5 µg/ml

Lane 2 : Anti-Bmi1 antibody (ab38295) at 1 µg/ml

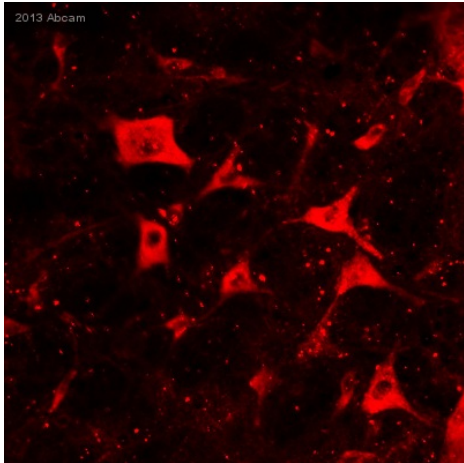
Lane 3 : Anti-Bmi1 antibody (ab38295) at 2 µg/ml

All lanes : K562 cell lysate

Predicted band size: 37 kDa

Observed band size: 33 kDa

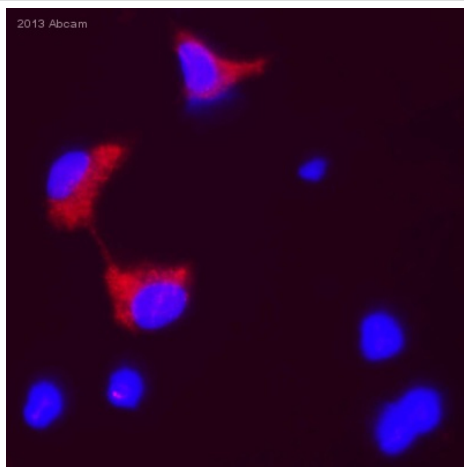
[why is the actual band size different from the predicted?](#)



Immunohistochemistry (Frozen sections) - Anti-Bmi1 antibody (ab38295)

This image is courtesy of an anonymous Abreview

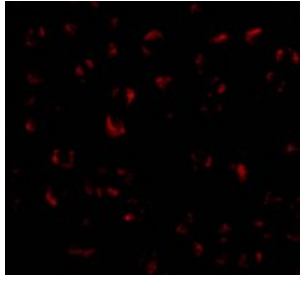
ab38295 staining Bmi1 in Rat brain tissue sections by Immunohistochemistry (IHC-Fr - frozen sections). Tissue was fixed with paraformaldehyde and blocked with 5% serum for 1 hour at 25°C. Samples were incubated with primary antibody (1/300) for 10 hours at 4°C. An Alexa Fluor® 555-conjugated Donkey anti-rabbit IgG polyclonal (1/300) was used as the secondary antibody.



Immunocytochemistry/ Immunofluorescence - Anti-Bmi1 antibody (ab38295)

This image is courtesy of an anonymous Abreview

ab38295 staining Bmi1 in Rat fibroblast cells by ICC/IF (Immunocytochemistry/immunofluorescence). Cells were fixed with paraformaldehyde, permeabilized with 0.01% Triton X-100 and blocked with 2.5% Goat serum for 10 minutes at 25°C. Samples were incubated with primary antibody (1/300) for 2 hour at 25°C. An Alexa Fluor® 555-conjugated Goat anti-rabbit IgG polyclonal was used as the secondary antibody.



Immunofluorescence of BMI-1 in K562 cells using ab38295 at 20 ug/ml.

Immunocytochemistry/ Immunofluorescence - Anti-Bmi1 antibody (ab38295)

Please note: All products are "FOR RESEARCH USE ONLY AND ARE NOT INTENDED FOR DIAGNOSTIC OR THERAPEUTIC USE"

Our Abpromise to you: Quality guaranteed and expert technical support

- Replacement or refund for products not performing as stated on the datasheet
- Valid for 12 months from date of delivery
- Response to your inquiry within 24 hours
- We provide support in Chinese, English, French, German, Japanese and Spanish
- Extensive multi-media technical resources to help you
- We investigate all quality concerns to ensure our products perform to the highest standards

If the product does not perform as described on this datasheet, we will offer a refund or replacement. For full details of the Abpromise, please visit <https://www.abcam.com/abpromise> or contact our technical team.

Terms and conditions

- Guarantee only valid for products bought direct from Abcam or one of our authorized distributors