


Product datasheet

Anti-BMP1/PCP antibody ab205394

[3 References](#) [4 Images](#)

Overview

Product name	Anti-BMP1/PCP antibody
Description	Goat polyclonal to BMP1/PCP
Host species	Goat
Specificity	ab205394 is expected to recognize both reported isoforms (NP_001190.1; NP_006120.1).
Tested applications	Suitable for: WB, IHC-P
Species reactivity	Reacts with: Mouse, Rat, Human Predicted to work with: Cow, Dog, Pig 
Immunogen	Synthetic peptide corresponding to Human BMP1/PCP aa 284-296 (internal sequence) (Cysteine residue). NP_001190.1; NP_006120.1. Sequence: DTVPKYEVNGVK Database link: P13497 Run BLAST with Run BLAST with
Positive control	WB: Human heart, human kidney and rat heart tissue lysates and NIH3T3 cell lysate.
General notes	Protein previously labeled as BMP1. Reproducibility is key to advancing scientific discovery and accelerating scientists' next breakthrough. Abcam is leading the way with our range of recombinant antibodies, knockout-validated antibodies and knockout cell lines, all of which support improved reproducibility. We are also planning to innovate the way in which we present recommended applications and species on our product datasheets, so that only applications & species that have been tested in our own labs, our suppliers or by selected trusted collaborators are covered by our Abpromise™ guarantee. In preparation for this, we have started to update the applications & species that this product is Abpromise guaranteed for. We are also updating the applications & species that this product has been “predicted to work with,” however this information is not covered by our Abpromise guarantee. Applications & species from publications and Abreviews that have not been tested in our own labs or in those of our suppliers are not covered by the Abpromise guarantee. Please check that this product meets your needs before purchasing. If you have any questions,

special requirements or concerns, please send us an inquiry and/or contact our Support team ahead of purchase. Recommended alternatives for this product can be found below, as well as customer reviews and Q&As.

Properties

Form	Liquid
Storage instructions	Shipped at 4°C. Store at +4°C short term (1-2 weeks). Upon delivery aliquot. Store at -20°C long term. Avoid freeze / thaw cycle.
Storage buffer	pH: 7.30 Preservative: 0.02% Sodium azide Constituents: 99% Tris buffered saline, 0.5% BSA
Purity	Immunogen affinity purified
Purification notes	ab205394 was purified from goat serum by ammonium sulfate precipitation followed by antigen affinity chromatography using the immunizing peptide.
Clonality	Polyclonal
Isotype	IgG

Applications

Our [Abpromise guarantee](#) covers the use of **ab205394** in the following tested applications.

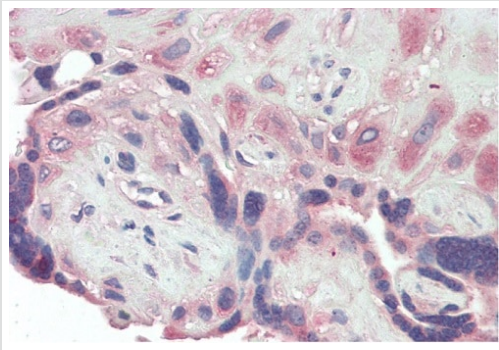
The application notes include recommended starting dilutions; optimal dilutions/concentrations should be determined by the end user.

Application	Abreviews	Notes
WB		Use a concentration of 1 - 3 µg/ml. Predicted molecular weight: 111 kDa. 1 hour primary incubation is recommended for this product.
IHC-P		Use a concentration of 5 µg/ml.

Target

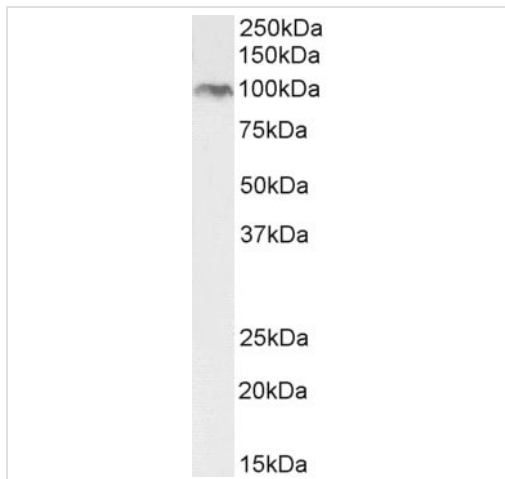
Function	Cleaves the C-terminal propeptides of procollagen I, II and III. Induces cartilage and bone formation. May participate in dorsoventral patterning during early development by cleaving chordin (CHRD). Responsible for the proteolytic activation of lysyl oxidase LOX.
Tissue specificity	Ubiquitous.
Involvement in disease	Osteogenesis imperfecta 13
Sequence similarities	Belongs to the peptidase M12A family. Contains 5 CUB domains. Contains 2 EGF-like domains.
Post-translational modifications	Proteolytically activated in the trans-Golgi network by furin-like/paired basic proprotein convertases, cleavage is not required for secretion.
Cellular localization	Golgi apparatus, trans-Golgi network. Secreted, extracellular space, extracellular matrix. Co-localizes with POSTN in the Golgi.

Images



Immunohistochemistry (Formalin/PFA-fixed paraffin-embedded sections) - Anti-BMP1/PCP antibody (ab205394)

Immunohistochemical analysis of paraffin embedded Human placenta tissue, staining BMP1/PCP with ab205394 at 5µg/ml. Steamed antigen retrieval with citrate buffer pH 6, AP-staining.



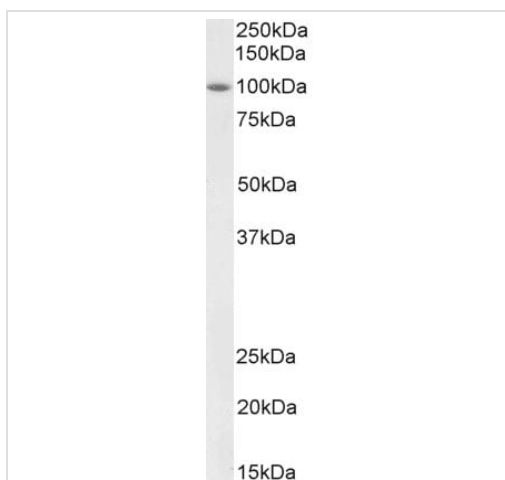
Western blot - Anti-BMP1/PCP antibody (ab205394)

Anti-BMP1/PCP antibody (ab205394) at 2 µg/ml + NIH3T3 cell lysate in RIPA buffer at 35 µg

Developed using the ECL technique.

Predicted band size: 111 kDa

Incubated with the primary antibody for 1 hour.



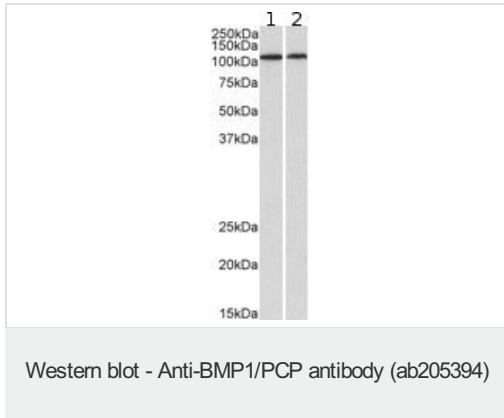
Western blot - Anti-BMP1/PCP antibody (ab205394)

Anti-BMP1/PCP antibody (ab205394) at 2 µg/ml + Rat heart tissue lysate in RIPA buffer at 35 µg

Developed using the ECL technique.

Predicted band size: 111 kDa

Incubated with the primary antibody for 1 hour.



All lanes : Anti-BMP1/PCP antibody (ab205394) at 1 µg/ml

Lane 1 : Human heart cell lysate

Lane 2 : Human kidney cell lysate

Lysates/proteins at 35 µg per lane.

Developed using the ECL technique.

Predicted band size: 111 kDa

Please note: All products are "FOR RESEARCH USE ONLY. NOT FOR USE IN DIAGNOSTIC PROCEDURES"

Our Abpromise to you: Quality guaranteed and expert technical support

- Replacement or refund for products not performing as stated on the datasheet
- Valid for 12 months from date of delivery
- Response to your inquiry within 24 hours
- We provide support in Chinese, English, French, German, Japanese and Spanish
- Extensive multi-media technical resources to help you
- We investigate all quality concerns to ensure our products perform to the highest standards

If the product does not perform as described on this datasheet, we will offer a refund or replacement. For full details of the Abpromise, please visit <https://www.abcam.com/abpromise> or contact our technical team.

Terms and conditions

- Guarantee only valid for products bought direct from Abcam or one of our authorized distributors