

Product datasheet

Anti-BMP6 antibody [morph-6.1] ab15640

★★★★☆ 5 Abreviews 6 References 3 Images

Overview

Product name	Anti-BMP6 antibody [morph-6.1]
Description	Mouse monoclonal [morph-6.1] to BMP6
Host species	Mouse
Tested applications	Suitable for: IHC-P, ICC/IF, WB
Species reactivity	Reacts with: Mouse, Rat, Dog, Human
Immunogen	Synthetic peptide: MPGLGRRQWLCWWWGLLCSCCGPPPLRP conjugated to KLH, corresponding to amino acids 1-29 of Rat BMP6. Run BLAST with Run BLAST with
Positive control	Positive staining can be observed in embryonic and adult central nervous system. Rat radial glial cells of the developing central nervous system from E11 to E19. In rat peripheral nerves a selective intracellular immunoreactivity can be found in perinuclear region of most Schwann cells which form the myelin sheath. However, some Schwann cells were negative for the antigen.
General notes	Pre-incubation of anti BMP6 with amino-terminal peptide 1-29 of BMP6 inhibits binding of the mAb to tissue sections. Pre-incubation with other amino-terminal synthetic peptides of human BMP7, BMP4, BMP3 and BMP2 as well as an irrelevant peptide does not inhibit specific tissue staining.

Properties

Form	Liquid
Storage instructions	Shipped at 4°C. Upon delivery aliquot. Avoid freeze / thaw cycle. Stable for 12 months at -20°C.
Storage buffer	Preservative: 0.05% Proclin Constituents: 2.3% Dibasic monohydrogen sodium phosphate, 0.52% Sodium phosphate monobasic, monohydrate
Purity	Affinity purified
Primary antibody notes	Pre-incubation of anti BMP6 with amino-terminal peptide 1-29 of BMP6 inhibits binding of the mAb to tissue sections. Pre-incubation with other amino-terminal synthetic peptides of human BMP7, BMP4, BMP3 and BMP2 as well as an irrelevant peptide does not inhibit specific tissue staining.

Clonality	Monoclonal
Clone number	morph-6.1
Isotype	IgG1

Applications

Our [Abpromise guarantee](#) covers the use of **ab15640** in the following tested applications.

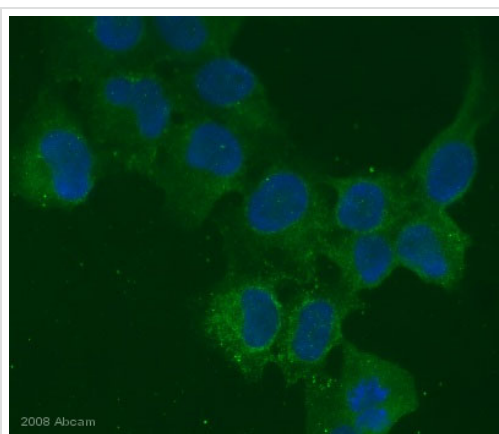
The application notes include recommended starting dilutions; optimal dilutions/concentrations should be determined by the end user.

Application	Abreviews	Notes
IHC-P	★★★★★	Use a concentration of 1 - 2 µg/ml. Perform heat mediated antigen retrieval via the pressure cooker method before commencing with IHC staining protocol.
ICC/IF	★★★★★	Use a concentration of 1 µg/ml.
WB	★★★★☆	1/100. Detects a band of approximately 57 kDa (predicted molecular weight: 57 kDa).

Target

Function	Induces cartilage and bone formation.
Sequence similarities	Belongs to the TGF-beta family.
Cellular localization	Secreted.

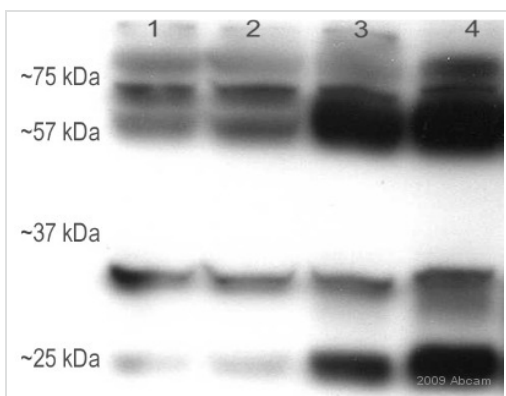
Images



ab15640 staining human U2-OS cells by ICC/IF. Cells were PFA fixed and permeabilized in Triton-X-100 prior to blocking in 2% serum for 1 hour at 20°C. The primary antibody was diluted 1/100 and incubated with the sample for 1 hour at 37°C. The secondary antibody was Alexa Fluor®488 conjugated chicken anti-mouse, diluted 1/1000.

Immunocytochemistry/ Immunofluorescence - Anti-BMP6 antibody [morph-6.1] (ab15640)

This image is courtesy of an anonymous Abreview



Western blot - Anti-BMP6 antibody [morph-6.1] (ab15640)

This image is courtesy of an Abreview submitted by Dr Ruma Raha-Chowdhury

All lanes : Anti-BMP6 antibody [morph-6.1] (ab15640) at 1/400 dilution

All lanes : mouse liver

Lysates/proteins at 20 µg per lane.

Secondary

All lanes : Non-Abcam Antibody was used: Dako Cytomation P0260

Conjugation: HRP at 1/3000 dilution

Developed using the ECL technique.

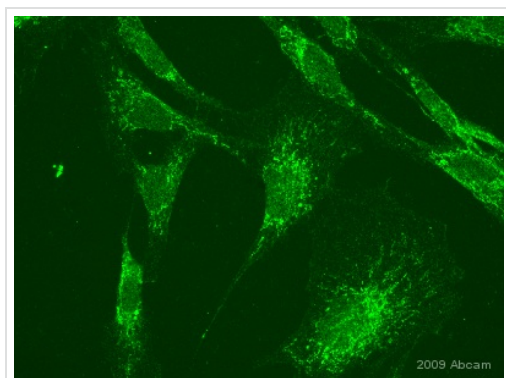
Performed under reducing conditions.

Predicted band size: 57 kDa

Observed band size: 57 kDa

Additional bands at: 25&30&75 kDa (possible non-specific binding)

Exposure time: 10 seconds



Immunocytochemistry/ Immunofluorescence - Anti-BMP6 antibody [morph-6.1] (ab15640)

This image is courtesy of Ruma Raha-Chowdhury, University Of Cambridge, United Kingdom

ICC/IF image of ab15640 staining primary myoblast cells. The cells were 4% PFA fixed (10 min) and then incubated in 1%BSA / 5% normal donkey serum / 0.3M glycine in 0.1% PBS-Tritonx100 for 1h to permeabilise the cells and block non-specific protein-protein interactions. The cells were then incubated with the antibody (ab15640, 1µg/ml) overnight at +4°C. The secondary antibody (green) was Alexa Fluor® 488 donkey anti-mouse IgG (H+L) used at a 1/1000 dilution for 1h.

Please note: All products are "FOR RESEARCH USE ONLY AND ARE NOT INTENDED FOR DIAGNOSTIC OR THERAPEUTIC USE"

Our Abpromise to you: Quality guaranteed and expert technical support

- Replacement or refund for products not performing as stated on the datasheet
- Valid for 12 months from date of delivery
- Response to your inquiry within 24 hours

- We provide support in Chinese, English, French, German, Japanese and Spanish
- Extensive multi-media technical resources to help you
- We investigate all quality concerns to ensure our products perform to the highest standards

If the product does not perform as described on this datasheet, we will offer a refund or replacement. For full details of the Abpromise, please visit <https://www.abcam.com/abpromise> or contact our technical team.

Terms and conditions

- Guarantee only valid for products bought direct from Abcam or one of our authorized distributors