



Product datasheet

Anti-Bone marrow stromal cell antigen 1 antibody ab235786

1 Image

Overview

Product name	Anti-Bone marrow stromal cell antigen 1 antibody
Description	Rabbit polyclonal to Bone marrow stromal cell antigen 1
Host species	Rabbit
Tested applications	Suitable for: IHC-P
Species reactivity	Reacts with: Human
Immunogen	<p>Recombinant fragment corresponding to Human Bone marrow stromal cell antigen 1 aa 29-293. Sequence:</p> <p>GARARWRGEGTSAHLRDIFLGRCAEYRALLSPEQRNK NCTAWEAFKVAL DKDPCSVLPSDYDLFINLSRHSIPRDKSLFWENSHLLV NSFADNTRRFMP LSDVLYGRVADFLSWCRQKNDSGLDYQSCPTSEDCE NNPVDSFWKRASIQ YSKDSSGVIHVMLNGSEPTGAYPIKGGFFADYEIPNLQKE KITRIEIVMH EIGGPNVESCGEKSMKVLEKRLKDMGFQYSCINDYRP VKLLQCVDHSTHP DCALKSAAAATQRKA</p> <p>Database link: Q10588</p> <p style="text-align: right;">  Run BLAST with  Run BLAST with </p>
Positive control	IHC-P: Human testis tissue.

Properties

Form	Liquid
Storage instructions	Shipped at 4°C. Store at +4°C short term (1-2 weeks). Upon delivery aliquot. Store at -20°C long term. Avoid freeze / thaw cycle.
Storage buffer	<p>pH: 7.30</p> <p>Preservative: 0.02% Sodium azide</p> <p>Constituents: PBS, 50% Glycerol</p>
Purity	Immunogen affinity purified

Clonality	Polyclonal
Isotype	IgG

Applications

Our [Abpromise guarantee](#) covers the use of **ab235786** in the following tested applications.

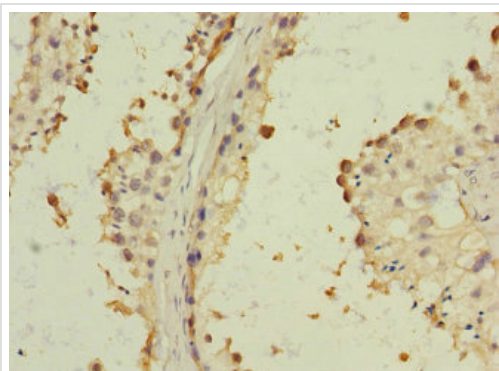
The application notes include recommended starting dilutions; optimal dilutions/concentrations should be determined by the end user.

Application	Abreviews	Notes
IHC-P		1/20 - 1/200.

Target

Function	Synthesizes the second messengers cyclic ADP-ribose and nicotinate-adenine dinucleotide phosphate, the former a second messenger that elicits calcium release from intracellular stores. May be involved in pre-B-cell growth.
Tissue specificity	Widely expressed.
Sequence similarities	Belongs to the ADP-ribosyl cyclase family.
Cellular localization	Cell membrane.

Images



Paraffin-embedded human testis tissue stained for Bone marrow stromal cell antigen 1 using ab235786 at 1/100 dilution in immunohistochemical analysis.

Immunohistochemistry (Formalin/PFA-fixed paraffin-embedded sections) - Anti-Bone marrow stromal cell antigen 1 antibody (ab235786)

Please note: All products are "FOR RESEARCH USE ONLY. NOT FOR USE IN DIAGNOSTIC PROCEDURES"

Our Abpromise to you: Quality guaranteed and expert technical support

- Replacement or refund for products not performing as stated on the datasheet

- Valid for 12 months from date of delivery
- Response to your inquiry within 24 hours

- We provide support in Chinese, English, French, German, Japanese and Spanish
- Extensive multi-media technical resources to help you
- We investigate all quality concerns to ensure our products perform to the highest standards

If the product does not perform as described on this datasheet, we will offer a refund or replacement. For full details of the Abpromise, please visit <https://www.abcam.com/abpromise> or contact our technical team.

Terms and conditions

- Guarantee only valid for products bought direct from Abcam or one of our authorized distributors