

## Product datasheet

# Anti-Bovine Serum Albumin antibody [1C12] ab79827

[2 Images](#)

### Overview

<b>Product name</b>	Anti-Bovine Serum Albumin antibody [1C12]
<b>Description</b>	Mouse monoclonal [1C12] to Bovine Serum Albumin
<b>Host species</b>	Mouse
<b>Specificity</b>	This antibody reacts specifically with BSA. It does not cross react with Human Serum Albumin or Albumin from other species.
<b>Tested applications</b>	<b>Suitable for:</b> ELISA, WB
<b>Species reactivity</b>	<b>Reacts with:</b> Cow <b>Does not react with:</b> Rabbit, Human
<b>Immunogen</b>	Bovine Serum Albumin.

### Properties

<b>Form</b>	Liquid
<b>Storage instructions</b>	Shipped at 4°C. Upon delivery aliquot and store at -20°C. Avoid freeze / thaw cycles.
<b>Storage buffer</b>	Constituents: 1.21% Tris, 0.75% Glycine, 2% Sucrose
<b>Purity</b>	Protein A purified
<b>Clonality</b>	Monoclonal
<b>Clone number</b>	1C12
<b>Isotype</b>	IgG1
<b>Light chain type</b>	kappa

### Applications

Our [Abpromise guarantee](#) covers the use of **ab79827** in the following tested applications.

The application notes include recommended starting dilutions; optimal dilutions/concentrations should be determined by the end user.

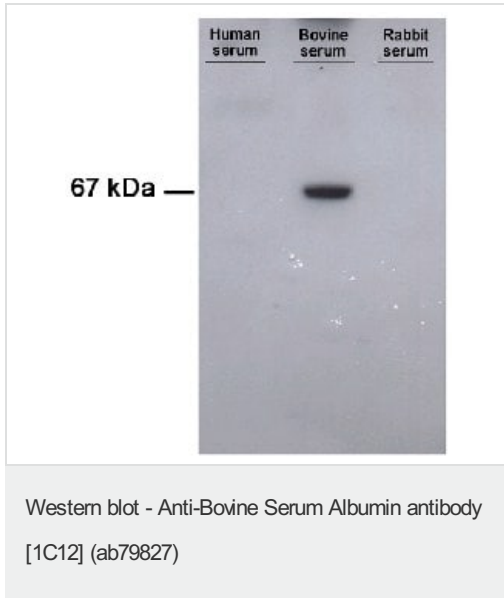
Application	Abreviews	Notes
ELISA		1/20000 - 1/100000.

Application	Abreviews	Notes
-------------	-----------	-------

WB 1/2000 - 1/10000. Predicted molecular weight: 69 kDa.

## Target

## Images



**All lanes** : Anti-Bovine Serum Albumin antibody [1C12] (ab79827) at 1/2000 dilution

**Lane 1** : Human Serum

**Lane 2** : Bovine Serum

**Lane 3** : Rabbit Serum

Lysates/proteins at 10 µl per lane.

### Secondary

**All lanes** : Goat anti-mouse IgG (H+L) peroxidase conjugate at 1/4000 dilution

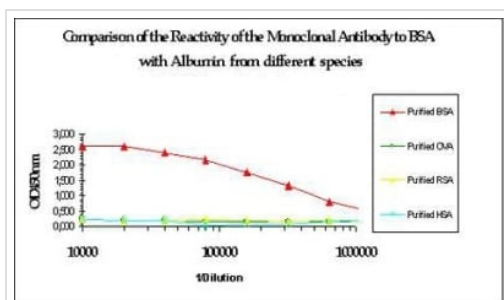
**Predicted band size:** 69 kDa

**Observed band size:** 67 kDa

[why is the actual band size different from the predicted?](#)

**Exposure time:** 1 minute

Non-denaturing SDS-PAGE (7.5%).



Graph showing comparison of the reactivity of [ab79287](#) with Bovine Serum Albumin, Ovalbumin, Rabbit Serum Albumin and Human Serum Albumin.

ELISA - Anti-Bovine Serum Albumin antibody [1C12] (ab79827)

**Please note:** All products are "FOR RESEARCH USE ONLY. NOT FOR USE IN DIAGNOSTIC PROCEDURES"

### **Our Abpromise to you: Quality guaranteed and expert technical support**

---

- Replacement or refund for products not performing as stated on the datasheet
- Valid for 12 months from date of delivery
- Response to your inquiry within 24 hours
  
- We provide support in Chinese, English, French, German, Japanese and Spanish
- Extensive multi-media technical resources to help you
- We investigate all quality concerns to ensure our products perform to the highest standards

If the product does not perform as described on this datasheet, we will offer a refund or replacement. For full details of the Abpromise, please visit <https://www.abcam.com/abpromise> or contact our technical team.

### **Terms and conditions**

---

- Guarantee only valid for products bought direct from Abcam or one of our authorized distributors