

## Product datasheet

# Anti-BRAP antibody ab237505

4 Images

### Overview

---

<b>Product name</b>	Anti-BRAP antibody
<b>Description</b>	Rabbit polyclonal to BRAP
<b>Host species</b>	Rabbit
<b>Tested applications</b>	<b>Suitable for:</b> WB, ICC/IF, IHC-P
<b>Species reactivity</b>	<b>Reacts with:</b> Mouse, Human
<b>Immunogen</b>	Recombinant fragment corresponding to Human BRAP aa 13-124. Database link: <a href="#">Q7Z569</a>
<b>Positive control</b>	WB: K562 whole cell lysate; Rat brain lysate. IHC-P: Human small intestine and colon cancer tissue. ICC/IF: PC-3 cells.
<b>General notes</b>	<p>Reproducibility is key to advancing scientific discovery and accelerating scientists' next breakthrough.</p> <p>Abcam is leading the way with our range of recombinant antibodies, knockout-validated antibodies and knockout cell lines, all of which support improved reproducibility.</p> <p>We are also planning to innovate the way in which we present recommended applications and species on our product datasheets, so that only applications &amp; species that have been tested in our own labs, our suppliers or by selected trusted collaborators are covered by our Abpromise™ guarantee.</p> <p>In preparation for this, we have started to update the applications &amp; species that this product is Abpromise guaranteed for.</p> <p>We are also updating the applications &amp; species that this product has been "predicted to work with," however this information is not covered by our Abpromise guarantee.</p> <p>Applications &amp; species from publications and Abreviews that have not been tested in our own labs or in those of our suppliers are not covered by the Abpromise guarantee.</p> <p>Please check that this product meets your needs before purchasing. If you have any questions, special requirements or concerns, please send us an inquiry and/or contact our Support team ahead of purchase. Recommended alternatives for this product can be found below, as well as customer reviews and Q&amp;As.</p>

### Properties

---

<b>Form</b>	Liquid
-------------	--------

<b>Storage instructions</b>	Shipped at 4°C. Store at +4°C short term (1-2 weeks). Upon delivery aliquot. Store at -20°C long term. Avoid freeze / thaw cycle.
<b>Storage buffer</b>	pH: 7.40 Constituents: 50% Glycerol (glycerin, glycerine), PBS, 0.03% Proclin 300
<b>Purity</b>	Protein G purified
<b>Purification notes</b>	Purity greater than 95%
<b>Clonality</b>	Polyclonal
<b>Isotype</b>	IgG

## Applications

Our [Abpromise guarantee](#) covers the use of **ab237505** in the following tested applications.

The application notes include recommended starting dilutions; optimal dilutions/concentrations should be determined by the end user.

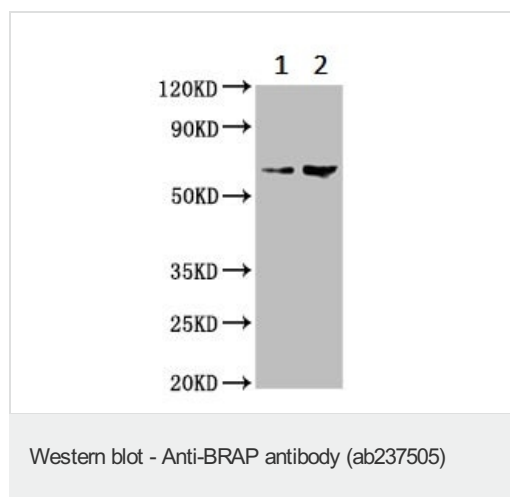
Application	Abreviews	Notes
WB		1/500 - 1/5000. Predicted molecular weight: 67 kDa.
ICC/IF		1/50 - 1/200.
IHC-P		1/200 - 1/500.

## Target

**Relevance** BRCA1 Associated Protein, BRAP2 (Impedes mitogenic signal propagation; IMP) is mainly cytoplasmic and binds to the NLS motifs of BRCA1 with similar specificity to that of importin alpha. BRAP2 may function as a cytoplasmic retention protein and play a role in regulating transport of nuclear proteins. More recently, the protein has been shown to impede signal transmission from Raf to MEK.

**Cellular localization** Cytoplasmic

## Images



**All lanes** : Anti-BRAP antibody (ab237505) at 1/500 dilution

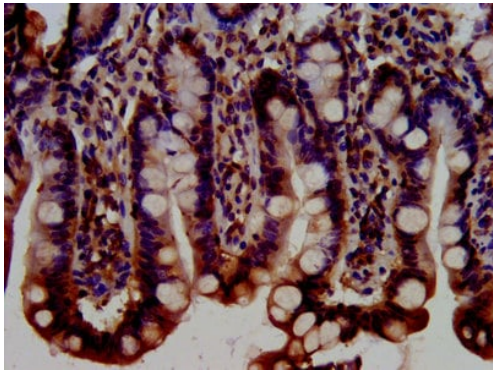
**Lane 1** : K562 (human chronic myelogenous leukemia cell line from bone marrow ) whole cell lysate

**Lane 2** : Rat brain lysate

### Secondary

**All lanes** : Goat polyclonal to rabbit IgG at 1/50000 dilution

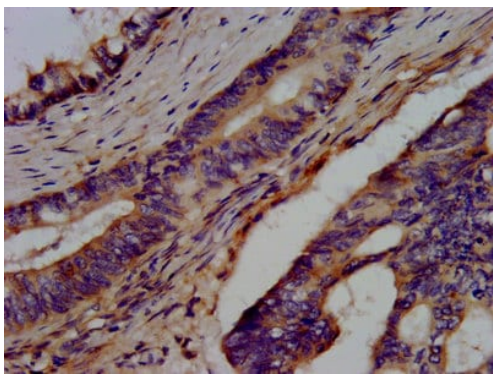
**Predicted band size:** 67 kDa



Immunohistochemistry (Formalin/PFA-fixed paraffin-embedded sections) - Anti-BRAP antibody (ab237505)

Paraffin-embedded human small intestine tissue stained for BRAP using ab237505 at 1/300 dilution in immunohistochemical analysis.

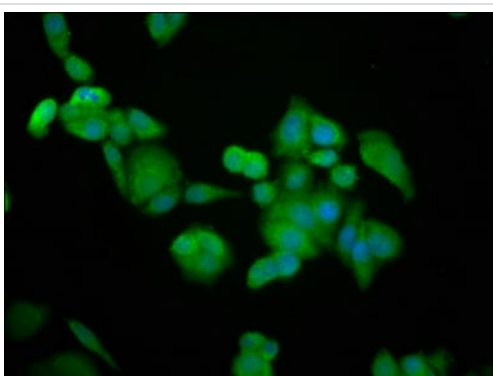
After dewaxing and hydration, antigen retrieval was mediated by high pressure in a citrate buffer (pH 6.0). Section was blocked with 10% normal goat serum 30 minutes at RT. Then primary antibody (1% BSA) was incubated at 4°C overnight. The primary is detected by a biotinylated secondary antibody and visualized using an HRP conjugated SP system.



Immunohistochemistry (Formalin/PFA-fixed paraffin-embedded sections) - Anti-BRAP antibody (ab237505)

Paraffin-embedded human colon cancer tissue stained for BRAP using ab237505 at 1/300 dilution in immunohistochemical analysis.

After dewaxing and hydration, antigen retrieval was mediated by high pressure in a citrate buffer (pH 6.0). Section was blocked with 10% normal goat serum 30 minutes at RT. Then primary antibody (1% BSA) was incubated at 4°C overnight. The primary is detected by a biotinylated secondary antibody and visualized using an HRP conjugated SP system.



Immunocytochemistry/ Immunofluorescence - Anti-BRAP antibody (ab237505)

PC-3 (Human prostate adenocarcinoma cell line) cells stained for BRAP (green) using ab237505 at 1/100 dilution in ICC/IF.

Secondary antibody is an Alexa Fluor<sup>®</sup> 488-conjugated Goat Anti-Rabbit IgG (H+L). The nuclear counter stain is DAPI (blue).

The cells were fixed in 4% formaldehyde, permeabilized using 0.2% Triton X-100 and blocked in 10% normal goat serum. The cells were then incubated with the antibody overnight at 4°C.

## **Our Abpromise to you: Quality guaranteed and expert technical support**

---

- Replacement or refund for products not performing as stated on the datasheet
- Valid for 12 months from date of delivery
- Response to your inquiry within 24 hours
  
- We provide support in Chinese, English, French, German, Japanese and Spanish
- Extensive multi-media technical resources to help you
- We investigate all quality concerns to ensure our products perform to the highest standards

If the product does not perform as described on this datasheet, we will offer a refund or replacement. For full details of the Abpromise, please visit <https://www.abcam.com/abpromise> or contact our technical team.

## **Terms and conditions**

---

- Guarantee only valid for products bought direct from Abcam or one of our authorized distributors