




Product datasheet

Anti-BRF2 antibody - N-terminal ab194442

1 References 2 Images

Overview

<b>Product name</b>	Anti-BRF2 antibody - N-terminal
<b>Description</b>	Mouse polyclonal to BRF2 - N-terminal
<b>Host species</b>	Mouse
<b>Tested applications</b>	<b>Suitable for:</b> WB
<b>Species reactivity</b>	<b>Reacts with:</b> Human, Recombinant fragment <b>Predicted to work with:</b> Mouse, Rat, Cow, Cynomolgus monkey 
<b>Immunogen</b>	Recombinant fragment (GST-tag) corresponding to Human BRF2 aa 1-100 (N terminal). Sequence: MPGRGRCPDCGSTELVEDSHYSQSQLVCSDCGCVV TEGLTTTTFSDEGNL REVTYSRSTGENEQVSRSQQRGLRRVRDLRCRVLQLP PTFEDTAVAYYQQA  Database link: <a href="#">Q9HAW0</a>   <a href="#">Run BLAST with</a>  <a href="#">Run BLAST with</a>
<b>Positive control</b>	BRF2 recombinant protein; Human ovarian cancer tissue lysate.

Properties

<b>Form</b>	Liquid
<b>Storage instructions</b>	Shipped at 4°C. Store at +4°C short term (1-2 weeks). Upon delivery aliquot. Store at -20°C long term. Avoid freeze / thaw cycle.
<b>Storage buffer</b>	Constituent: 50% Glycerol
<b>Purity</b>	Whole antiserum
<b>Clonality</b>	Polyclonal
<b>Isotype</b>	IgG

Applications

Our [Abpromise guarantee](#) covers the use of **ab194442** in the following tested applications.

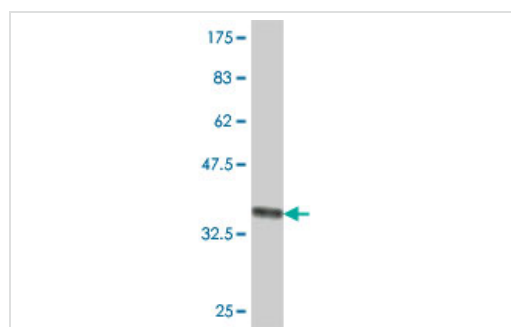
The application notes include recommended starting dilutions; optimal dilutions/concentrations should be determined by the end user.

Application	Abreviews	Notes
WB		1/500 - 1/2500. Predicted molecular weight: 47 kDa.

## Target

<b>Function</b>	General activator of RNA polymerase III transcription. Factor exclusively required for RNA polymerase III transcription of genes with promoter elements upstream of the initiation sites.
<b>Sequence similarities</b>	Belongs to the TFIIIB family. Contains 1 TFIIIB-type zinc finger.
<b>Cellular localization</b>	Nucleus.

## Images



Western blot - Anti-BRF2 antibody - N-terminal (ab194442)

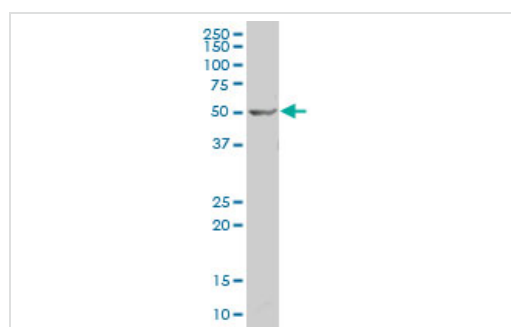
Anti-BRF2 antibody - N-terminal (ab194442) at 1/2500 dilution + BRF2 recombinant protein (immunizing peptide) at 0.2 µg

**Predicted band size:** 47 kDa

**Observed band size:** 37 kDa

[why is the actual band size different from the predicted?](#)

The observed band size may not correspond to the predicted protein molecular weight as the immunogen (recombinant fragment) was used for the test lane.



Western blot - Anti-BRF2 antibody - N-terminal (ab194442)

Anti-BRF2 antibody - N-terminal (ab194442) at 1/1000 dilution + Human ovarian cancer tissue lysate at 50 µg

**Predicted band size:** 47 kDa

**Please note:** All products are "FOR RESEARCH USE ONLY. NOT FOR USE IN DIAGNOSTIC PROCEDURES"

## **Our Abpromise to you: Quality guaranteed and expert technical support**

---

- Replacement or refund for products not performing as stated on the datasheet
- Valid for 12 months from date of delivery
- Response to your inquiry within 24 hours
  
- We provide support in Chinese, English, French, German, Japanese and Spanish
- Extensive multi-media technical resources to help you
- We investigate all quality concerns to ensure our products perform to the highest standards

If the product does not perform as described on this datasheet, we will offer a refund or replacement. For full details of the Abpromise, please visit <https://www.abcam.com/abpromise> or contact our technical team.

## **Terms and conditions**

---

- Guarantee only valid for products bought direct from Abcam or one of our authorized distributors