

Product datasheet

Brilliant Cresyl Blue Solution (1.5%) ab246814

1 Image

Overview

---

**Product name**

Brilliant Cresyl Blue Solution (1.5%)

**General notes**

Brilliant Cresyl Blue Solution (1.5%) ab246814 is a supravital hematology stain for counting reticulocytes in peripheral blood smears. The number of reticulocytes in the blood is a simple measure of erythropoietic performance. Reticulocytes are immature erythrocytes that contain nuclear remnants of basophilic ribonucleoproteins which decreases as the reticulocyte matures. When stained, reticulocytes appear to contain dark blue granules or filaments.

**Staining Interpretation:**

Reticulocytes: Blue/Green with Dark Blue Granules.

Erythrocytes: Blue/Green.

Leukocytes: Light Blue.

**Control Tissue:** Blood.

**Other products for staining tissue sections**

Find more kits and reagents in the [special stains guide](#), or products for antigen retrieval, blocking, signal amplification, visualization, counterstaining, and mounting in the [IHC kits and reagents guide](#).

**Procedure (Glass Tube):**

1. Pipette a volume of Brilliant Cresyl Blue in the bottom of a glass tube followed by an equal volume of uncoagulated blood and mix well.
2. Incubate mixture for 5-15 minutes in a warm water bath.
3. Mix well prior to preparing smear.
4. Prepare 2-3 glass slide smears and let dry.
5. Clear slide and mount in synthetic resin.

**Procedure (Glass Slide):**

1. Pipette a volume of Brilliant Cresyl Blue in the bottom of a glass slide followed by an equal volume of uncoagulated blood and mix well.
2. Place immediately in a warm humidity chamber and incubate mixture for 5-15 minutes.
3. Mix well prior to preparing smear.
4. Prepare smear and let dry.
5. Clear slide and mount in synthetic resin.

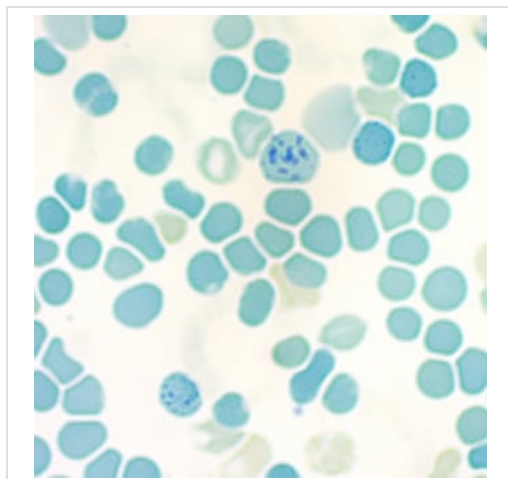
## Properties

---

<b>Form</b>	Liquid
<b>Storage instructions</b>	Shipped at Room Temperature. Store at Room Temperature.
<b>Storage buffer</b>	Constituents: 0.85% Sodium chloride, 1.5% Brilliant Cresyl Blue, 0.1% Safranin O

## Images

---



ab246814 Brilliant Cresyl Blue Solution (1.5%) staining reticulocytes (Blue/Green with Dark Blue Granules); Erythrocytes (Blue/Green) and Leukocytes (Light Blue).

Other - Brilliant Cresyl Blue Solution (1.5%)  
(ab246814)

**Please note:** All products are "FOR RESEARCH USE ONLY. NOT FOR USE IN DIAGNOSTIC PROCEDURES"

## Our Abpromise to you: Quality guaranteed and expert technical support

---

- Replacement or refund for products not performing as stated on the datasheet
- Valid for 12 months from date of delivery
- Response to your inquiry within 24 hours
- We provide support in Chinese, English, French, German, Japanese and Spanish
- Extensive multi-media technical resources to help you
- We investigate all quality concerns to ensure our products perform to the highest standards

If the product does not perform as described on this datasheet, we will offer a refund or replacement. For full details of the Abpromise, please visit <https://www.abcam.com/abpromise> or contact our technical team.

## Terms and conditions

---

- Guarantee only valid for products bought direct from Abcam or one of our authorized distributors