

## Product datasheet

# Anti-BTBD17 antibody [EPR9593(B)] ab138507

Recombinant **RabMAb**

[1 References](#) [4 Images](#)

### Overview

<b>Product name</b>	Anti-BTBD17 antibody [EPR9593(B)]
<b>Description</b>	Rabbit monoclonal [EPR9593(B)] to BTBD17
<b>Host species</b>	Rabbit

### Tested Applications & Species

Application	Species
IHC-P	Human
WB	Human

[See all applications and species data](#) ↓

<b>Immunogen</b>	Synthetic peptide within Human BTBD17 aa 1-100. The exact sequence is proprietary.
<b>Positive control</b>	Human colon cancer, Human fetal kidney, and Human bladder lysates, Human kidney clear cell carcinoma and Human liver tissues.
<b>General notes</b>	Mouse, Rat: We have preliminary internal testing data to indicate this antibody may not react with these species. Please contact us for more information.

This product is a recombinant monoclonal antibody, which offers several advantages including:

- High batch-to-batch consistency and reproducibility
- Improved sensitivity and specificity
- Long-term security of supply
- Animal-free production

For more information [see here](#).

Our RabMAb<sup>®</sup> technology is a patented hybridoma-based technology for making rabbit monoclonal antibodies. For details on our patents, please refer to [RabMAb<sup>®</sup> patents](#).




### Properties



<b>Form</b>	Liquid
-------------	--------

<b>Storage instructions</b>	Shipped at 4°C. Upon delivery aliquot and store at -20°C. Avoid freeze / thaw cycles.
<b>Storage buffer</b>	pH: 7.2 Preservative: 0.01% Sodium azide Constituents: 9% PBS, 40% Glycerol (glycerin, glycerine), 0.05% BSA, 50% Tissue culture supernatant
<b>Purity</b>	Tissue culture supernatant
<b>Clonality</b>	Monoclonal
<b>Clone number</b>	EPR9593(B)
<b>Isotype</b>	IgG

## Applications

**The Abpromise guarantee** Our [Abpromise guarantee](#) covers the use of **ab138507** in the following tested applications. The application notes include recommended starting dilutions; optimal dilutions/concentrations should be determined by the end user.

 <b>Guaranteed</b> Tested applications are guaranteed to work and covered by our Abpromise guarantee.	 <b>Predicted</b> Predicted to work for this combination of applications and species but not guaranteed.	 <b>Incompatible</b> Does not work for this combination of applications and species.
--	--	--

Application	Species
IHC-P	 Human
WB	 Human

Application	Abreviews	Notes
WB		1/1000 - 1/10000. Predicted molecular weight: 52 kDa.
IHC-P		1/50 - 1/100. Perform heat mediated antigen retrieval before commencing with IHC staining protocol.

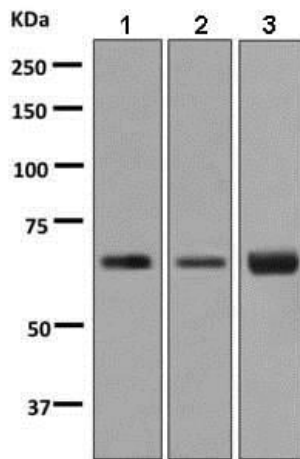
**Application notes** Is unsuitable for ICC/IF or IP.

## Target

**Sequence similarities** Contains 1 BACK (BTB/Kelch associated) domain.  
Contains 1 BTB (POZ) domain.

**Cellular localization** Secreted.

## Images



Western blot - Anti-BTBD17 antibody [EPR9593(B)] (ab138507)

**All lanes** : Anti-BTBD17 antibody [EPR9593(B)] (ab138507) at 1/1000 dilution

**Lane 1** : Human colon cancer lysate

**Lane 2** : Human fetal kidney lysate

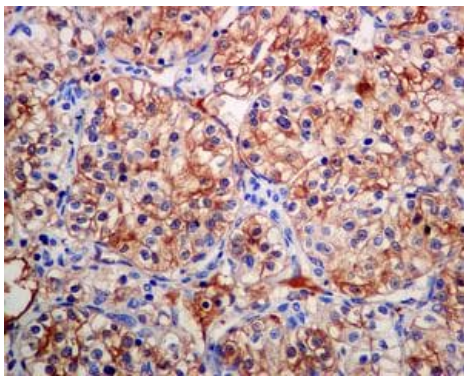
**Lane 3** : Human bladder lysate

Lysates/proteins at 10 µg per lane.

**Secondary**

**All lanes** : HRP labelled goat anti-rabbit at 1/2000 dilution

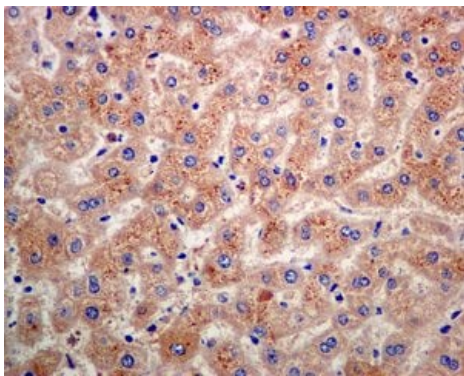
**Predicted band size:** 52 kDa



Immunohistochemistry (Formalin/PFA-fixed paraffin-embedded sections) - Anti-BTBD17 antibody [EPR9593(B)] (ab138507)

Immunohistochemical analysis of paraffin embedded Human kidney clear cell carcinoma tissue labelling BTBD17 with ab138507 antibody at a dilution of 1/50.

Perform heat mediated antigen retrieval before commencing with IHC staining protocol.



Immunohistochemistry (Formalin/PFA-fixed paraffin-embedded sections) - Anti-BTBD17 antibody [EPR9593(B)] (ab138507)

Immunohistochemical analysis of paraffin embedded Human liver tissue labelling BTBD17 with ab138507 antibody at a dilution of 1/50.

Perform heat mediated antigen retrieval before commencing with IHC staining protocol.

## Why choose a recombinant antibody?



**Research with confidence**  
Consistent and reproducible results



**Long-term and scalable supply**  
Recombinant technology



**Success from the first experiment**  
Confirmed specificity



**Ethical standards compliant**  
Animal-free production

Anti-BTBD17 antibody [EPR9593(B)] (ab138507)

**Please note:** All products are "FOR RESEARCH USE ONLY. NOT FOR USE IN DIAGNOSTIC PROCEDURES"

### Our Abpromise to you: Quality guaranteed and expert technical support

---

- Replacement or refund for products not performing as stated on the datasheet
- Valid for 12 months from date of delivery
- Response to your inquiry within 24 hours
- We provide support in Chinese, English, French, German, Japanese and Spanish
- Extensive multi-media technical resources to help you
- We investigate all quality concerns to ensure our products perform to the highest standards

If the product does not perform as described on this datasheet, we will offer a refund or replacement. For full details of the Abpromise, please visit <https://www.abcam.com/abpromise> or contact our technical team.

### Terms and conditions

---

- Guarantee only valid for products bought direct from Abcam or one of our authorized distributors