

Product datasheet

Anti-BTF antibody [EPR9981] ab155965

Recombinant RabMAb

2 Images

Overview

|                            |   |
|----------------------------|---|
| <b>Product name</b>        | Anti-BTF antibody [EPR9981]   |
| <b>Description</b>         | Rabbit monoclonal [EPR9981] to BTF  |
| <b>Host species</b>        | Rabbit  |
| <b>Tested applications</b> | <b>Suitable for:</b> WB, Flow Cyt<br><b>Unsuitable for:</b> ICC/IF, IHC-P or IP   |
| <b>Species reactivity</b>  | <b>Reacts with:</b> Human   |
| <b>Immunogen</b>           | Synthetic peptide corresponding to residues in Human BTF (Q9NYF8)   |
| <b>Positive control</b>    | Jurkat, K562 or MCF-7 lysate, permeabilized K562 cells.   |
| <b>General notes</b>       | Mouse, Rat: We have preliminary internal testing data to indicate this antibody may not react with these species. Please contact us for more information. |

Our RabMAb<sup>®</sup> technology is a patented hybridoma-based technology for making rabbit monoclonal antibodies. For details on our patents, please refer to [RabMab<sup>®</sup> patents](#).

This product is a [recombinant rabbit monoclonal antibody](#).

Properties

|                             |   |
|-----------------------------|---|
| <b>Form</b>                 | Liquid  |
| <b>Storage instructions</b> | Shipped at 4°C. Upon delivery aliquot and store at -20°C. Avoid freeze / thaw cycles.                             |
| <b>Storage buffer</b>       | Preservative: 0.01% Sodium azide<br>Constituents: 9% PBS, 40% Glycerol, 0.05% BSA, 50% Tissue culture supernatant |
| <b>Purity</b>               | Tissue culture supernatant  |
| <b>Clonality</b>            | Monoclonal  |
| <b>Clone number</b>         | EPR9981   |
| <b>Isotype</b>              | IgG   |

Applications

Our [Abpromise guarantee](#) covers the use of **ab155965** in the following tested applications.

The application notes include recommended starting dilutions; optimal dilutions/concentrations should be determined by the end user.

| Application | Abreviews | Notes   |
|-------------|-----------|---|
| WB          |           | 1/1000 - 1/10000. Predicted molecular weight: 106 kDa.  |
| Flow Cyt    |           | 1/100 - 1/500.<br><a href="#">ab172730</a> - Rabbit monoclonal IgG, is suitable for use as an isotype control with this antibody. |

**Application notes** Is unsuitable for ICC/IF, IHC-P or IP.

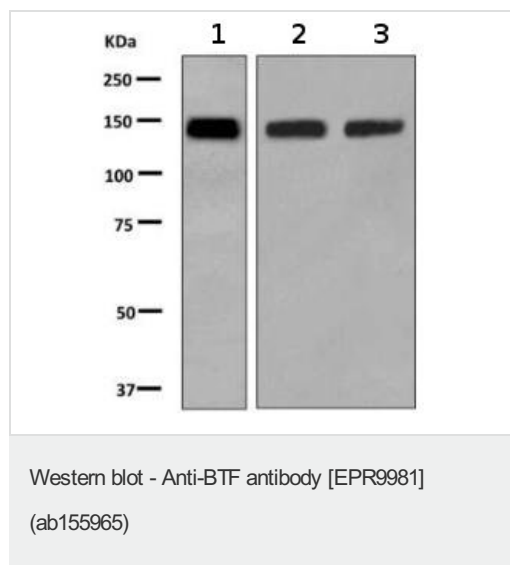
## Target

**Function** Death-promoting transcriptional repressor.

**Tissue specificity** Ubiquitous.

**Cellular localization** Cytoplasm. Nucleus.

## Images



**All lanes** : Anti-BTF antibody [EPR9981] (ab155965) at 1/1000 dilution

**Lane 1** : Jurkat cell lysate

**Lane 2** : K562 cell lysate

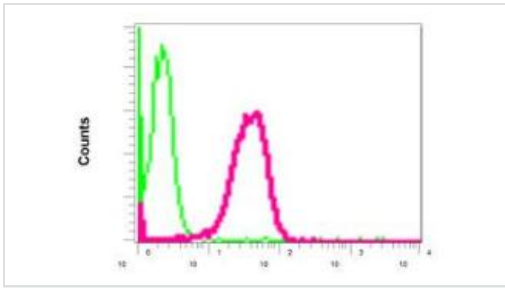
**Lane 3** : MCF-7 cell lysate

Lysates/proteins at 10 µg per lane.

### Secondary

**All lanes** : HRP labelled goat anti-rabbit at 1/2000 dilution

**Predicted band size:** 106 kDa



Flow Cytometry - Anti-BTF antibody [EPR9981]  
(ab155965)

Flow cytometry analysis of permeabilized K562 cells using ab155965 at a 1/100 dilution (red) or a rabbit IgG (negative) (green).

**Please note:** All products are "FOR RESEARCH USE ONLY. NOT FOR USE IN DIAGNOSTIC PROCEDURES"

### Our Abpromise to you: Quality guaranteed and expert technical support

---

- Replacement or refund for products not performing as stated on the datasheet
- Valid for 12 months from date of delivery
- Response to your inquiry within 24 hours
- We provide support in Chinese, English, French, German, Japanese and Spanish
- Extensive multi-media technical resources to help you
- We investigate all quality concerns to ensure our products perform to the highest standards

If the product does not perform as described on this datasheet, we will offer a refund or replacement. For full details of the Abpromise, please visit <https://www.abcam.com/abpromise> or contact our technical team.

### Terms and conditions

---

- Guarantee only valid for products bought direct from Abcam or one of our authorized distributors