



Product datasheet

Anti-BTN1A1 antibody ab234724

2 Images

Overview

Product name	Anti-BTN1A1 antibody
Description	Rabbit polyclonal to BTN1A1
Host species	Rabbit
Tested applications	Suitable for: IHC-P
Species reactivity	Reacts with: Human
Immunogen	<p>Recombinant fragment corresponding to Human BTN1A1 aa 27-210. Sequence:</p> <p>APFDVIGPPEPILAVVGEDAELPCRLSPNASAEHLELR WFRKKVSPAVLV HRDGREQEAEQMPEYRGRATLVQDGIAGRVALRIRG VRVSDDGEYTCFF REDGSYEEALVHLKVAALGSDPHISMQVQENGEICLE CTSVGWYPEPQVQ WRTSKGEKFPSTSESRNPDEEGLFTVAASVIIRD</p> <p>Database link: Q13410</p> <p style="text-align: right;"> Run BLAST with  Run BLAST with</p>
Positive control	IHC-P: Human liver and liver cancer tissue.

Properties

Form	Liquid
Storage instructions	Shipped at 4°C. Store at +4°C short term (1-2 weeks). Upon delivery aliquot. Store at -20°C long term. Avoid freeze / thaw cycle.
Storage buffer	<p>pH: 7.3 Preservative: 0.02% Sodium azide Constituents: PBS, 50% Glycerol</p>
Purity	Immunogen affinity purified
Clonality	Polyclonal
Isotype	IgG

Applications

Our [Abpromise guarantee](#) covers the use of **ab234724** in the following tested applications.

The application notes include recommended starting dilutions; optimal dilutions/concentrations should be determined by the end user.

Application	Abreviews	Notes
IHC-P		1/20 - 1/200.

Target

Function

May function in the secretion of milk-fat droplets. May act as a specific membrane-associated receptor for the association of cytoplasmic droplets with the apical plasma membrane (By similarity). Inhibits the proliferation of CD4 and CD8 T-cells activated by anti-CD3 antibodies, T-cell metabolism and IL2 and IFNG secretion.

Sequence similarities

Belongs to the immunoglobulin superfamily. BTN/MOG family.
Contains 1 B30.2/SPRY domain.
Contains 2 Ig-like V-type (immunoglobulin-like) domains.

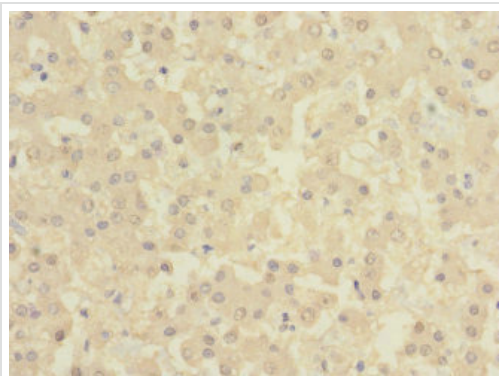
Post-translational modifications

N-glycosylated.

Cellular localization

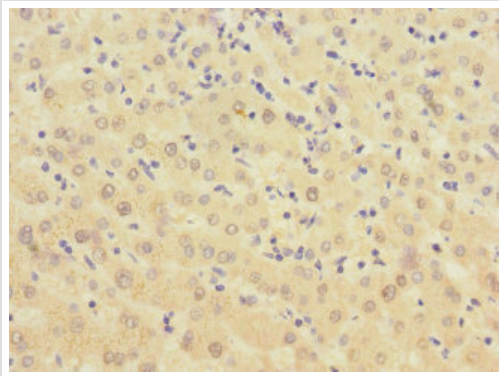
Membrane. Secreted.

Images



Paraffin-embedded human liver tissue stained for BTN1A1 using ab234724 at 1/100 dilution in immunohistochemical analysis.

Immunohistochemistry (Formalin/PFA-fixed paraffin-embedded sections) - Anti-BTN1A1 antibody (ab234724)



Paraffin-embedded human liver cancer tissue stained for BTN1A1 using ab234724 at 1/100 dilution in immunohistochemical analysis.

Immunohistochemistry (Formalin/PFA-fixed paraffin-embedded sections) - Anti-BTN1A1 antibody (ab234724)

Please note: All products are "FOR RESEARCH USE ONLY. NOT FOR USE IN DIAGNOSTIC PROCEDURES"

Our Abpromise to you: Quality guaranteed and expert technical support

- Replacement or refund for products not performing as stated on the datasheet
- Valid for 12 months from date of delivery
- Response to your inquiry within 24 hours

- We provide support in Chinese, English, French, German, Japanese and Spanish
- Extensive multi-media technical resources to help you
- We investigate all quality concerns to ensure our products perform to the highest standards

If the product does not perform as described on this datasheet, we will offer a refund or replacement. For full details of the Abpromise, please visit <https://www.abcam.com/abpromise> or contact our technical team.

Terms and conditions

- Guarantee only valid for products bought direct from Abcam or one of our authorized distributors