

Product datasheet

Anti-BTN2A2/BTF2 antibody [6C7D2] ab233763

5 Images

Overview

Product name	Anti-BTN2A2/BTF2 antibody [6C7D2]
Description	Mouse monoclonal [6C7D2] to BTN2A2/BTF2
Host species	Mouse
Tested applications	Suitable for: WB, IHC-P, Flow Cyt
Species reactivity	Reacts with: Human
Immunogen	Recombinant fragment corresponding to Human BTN2A2/BTF2 aa 57-237. (Expressed in E.coli). Database link: Q8WVV5
Positive control	WB: Recombinant human BTN2A2/BTF2 protein; BTN2A2/BTF2 (AA: extra 57-237)-hlgGFc transfected HEK-293 cell lysate. Flow: HeLa cells. IHC-P: Cervical cancer and bladder cancer tissue.
General notes	This product was previously labelled as BTN2A2

Reproducibility is key to advancing scientific discovery and accelerating scientists' next breakthrough.

Abcam is leading the way with our range of recombinant antibodies, knockout-validated antibodies and knockout cell lines, all of which support improved reproducibility.

We are also planning to innovate the way in which we present recommended applications and species on our product datasheets, so that only applications & species that have been tested in our own labs, our suppliers or by selected trusted collaborators are covered by our Abpromise™ guarantee.

In preparation for this, we have started to update the applications & species that this product is Abpromise guaranteed for.

We are also updating the applications & species that this product has been "predicted to work with," however this information is not covered by our Abpromise guarantee.

Applications & species from publications and Abreviews that have not been tested in our own labs or in those of our suppliers are not covered by the Abpromise guarantee.

Please check that this product meets your needs before purchasing. If you have any questions, special requirements or concerns, please send us an inquiry and/or contact our Support team ahead of purchase. Recommended alternatives for this product can be found below, as well as customer reviews and Q&As.

Properties

Form	Liquid
Storage instructions	Shipped at 4°C. Store at +4°C short term (1-2 weeks). Upon delivery aliquot. Store at -20°C long term. Avoid freeze / thaw cycle.
Storage buffer	Preservative: 0.05% Sodium azide Constituent: PBS
Purity	Protein G purified
Clonality	Monoclonal
Clone number	6C7D2
Isotype	IgG1

Applications

Our [Abpromise guarantee](#) covers the use of **ab233763** in the following tested applications.

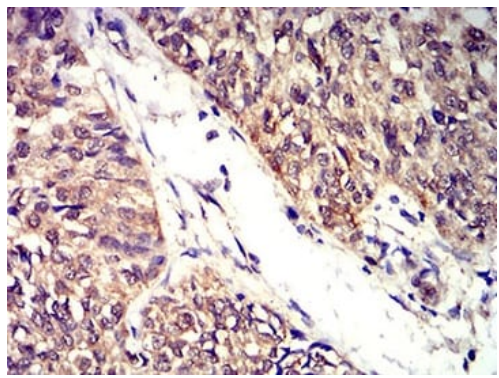
The application notes include recommended starting dilutions; optimal dilutions/concentrations should be determined by the end user.

Application	Abreviews	Notes
WB		1/500 - 1/2000.
IHC-P		1/200 - 1/1000.
Flow Cyt		1/200 - 1/400.

Target

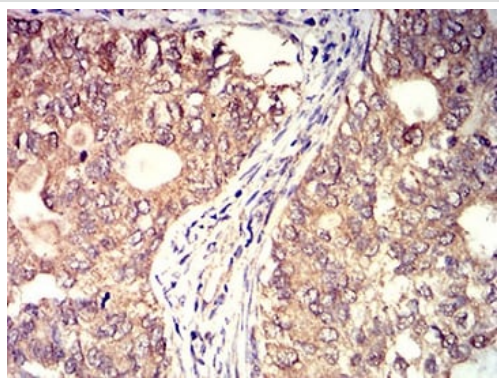
Tissue specificity	Highly expressed in brain, bone marrow, small intestine, muscle, spleen and pancreas. Moderate expression was seen in lung, liver and kidney.
Sequence similarities	Belongs to the immunoglobulin superfamily. BTN/MOG family. Contains 1 B30.2/SPRY domain. Contains 1 Ig-like C2-type (immunoglobulin-like) domain. Contains 1 Ig-like V-type (immunoglobulin-like) domain.
Cellular localization	Membrane.

Images



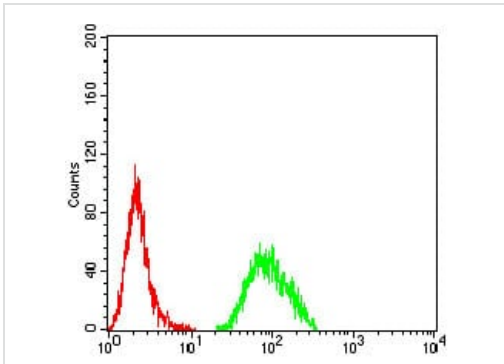
Immunohistochemistry (Formalin/PFA-fixed paraffin-embedded sections) - Anti-BTN2A2/BTF2 antibody [6C7D2] (ab233763)

Paraffin-embedded human bladder cancer tissue stained for BTN2A2/BTF2 using ab233763 at 1/200 dilution in immunohistochemical analysis. DAB staining.



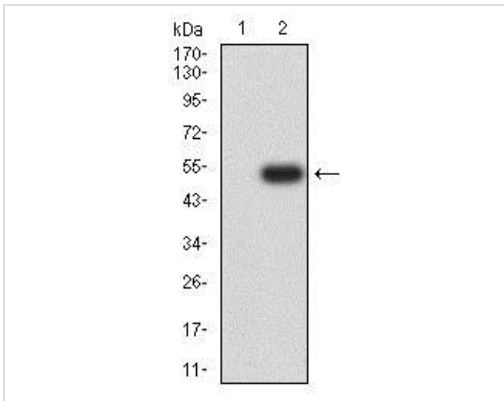
Immunohistochemistry (Formalin/PFA-fixed paraffin-embedded sections) - Anti-BTN2A2/BTF2 antibody [6C7D2] (ab233763)

Paraffin-embedded human cervical cancer tissue stained for BTN2A2/BTF2 using ab233763 at 1/200 dilution in immunohistochemical analysis. DAB staining.



Flow Cytometry - Anti-BTN2A2/BTF2 antibody
[6C7D2] (ab233763)

Flow cytometric analysis of HeLa (human epithelial cell line from cervix adenocarcinoma) cells labelling BTN2A2/BTF2 using ab233763 at 1/200 dilution (green) compared to a negative control (red).

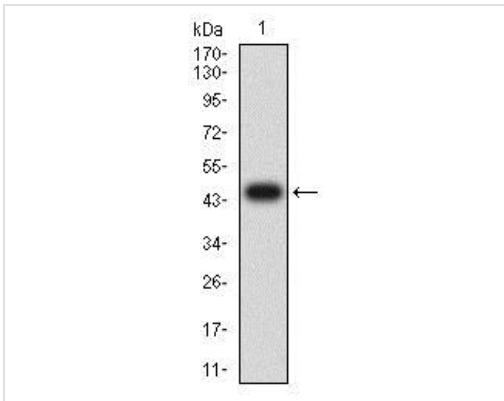


Western blot - Anti-BTN2A2/BTF2 antibody [6C7D2]
(ab233763)

All lanes : Anti-BTN2A2/BTF2 antibody [6C7D2] (ab233763) at 1/500 dilution

Lane 1 : HEK-293 (human epithelial cell line from embryonic kidney) cell lysate

Lane 2 : BTN2A2/BTF2 (AA: extra 57-237)-hlgGfc transfected HEK-293 cell lysate.



Western blot - Anti-BTN2A2/BTF2 antibody [6C7D2]
(ab233763)

Anti-BTN2A2/BTF2 antibody [6C7D2] (ab233763) at 1/500 dilution + Recombinant human BTN2A2/BTF2 protein

Expected MW is 46.4 kDa.

Please note: All products are "FOR RESEARCH USE ONLY. NOT FOR USE IN DIAGNOSTIC PROCEDURES"

Our Abpromise to you: Quality guaranteed and expert technical support

- Replacement or refund for products not performing as stated on the datasheet

- Valid for 12 months from date of delivery
- Response to your inquiry within 24 hours

- We provide support in Chinese, English, French, German, Japanese and Spanish
- Extensive multi-media technical resources to help you
- We investigate all quality concerns to ensure our products perform to the highest standards

If the product does not perform as described on this datasheet, we will offer a refund or replacement. For full details of the Abpromise, please visit <https://www.abcam.com/abpromise> or contact our technical team.

Terms and conditions

- Guarantee only valid for products bought direct from Abcam or one of our authorized distributors