

Product datasheet

Anti-BTNL2 antibody ab223053

3 Images

Overview

Product name	Anti-BTNL2 antibody
Description	Rabbit polyclonal to BTNL2
Host species	Rabbit
Tested applications	Suitable for: WB, IHC-P
Species reactivity	Reacts with: Human
Immunogen	Recombinant fragment corresponding to Human BTNL2 aa 26-202. Database link: Q9UIR0
Positive control	WB: HEK-293 and K562 whole cell lysates; mouse brain lysate. IHC-P: Human testis and pancreatic tissue.
General notes	<p>Reproducibility is key to advancing scientific discovery and accelerating scientists' next breakthrough.</p> <p>Abcam is leading the way with our range of recombinant antibodies, knockout-validated antibodies and knockout cell lines, all of which support improved reproducibility.</p> <p>We are also planning to innovate the way in which we present recommended applications and species on our product datasheets, so that only applications & species that have been tested in our own labs, our suppliers or by selected trusted collaborators are covered by our Abpromise™ guarantee.</p> <p>In preparation for this, we have started to update the applications & species that this product is Abpromise guaranteed for.</p> <p>We are also updating the applications & species that this product has been "predicted to work with," however this information is not covered by our Abpromise guarantee.</p> <p>Applications & species from publications and Abreviews that have not been tested in our own labs or in those of our suppliers are not covered by the Abpromise guarantee.</p> <p>Please check that this product meets your needs before purchasing. If you have any questions, special requirements or concerns, please send us an inquiry and/or contact our Support team ahead of purchase. Recommended alternatives for this product can be found below, as well as customer reviews and Q&As.</p>

Properties

Form	Liquid
-------------	--------

Storage instructions	Shipped at 4°C. Store at +4°C short term (1-2 weeks). Upon delivery aliquot. Store at -20°C long term. Avoid freeze / thaw cycle.
Storage buffer	pH: 7.40 Constituents: 50% Glycerol (glycerin, glycerine), PBS, 0.03% Proclin 300
Purity	Protein G purified
Purification notes	>955 pure
Clonality	Polyclonal
Isotype	IgG

Applications

Our [Abpromise guarantee](#) covers the use of **ab223053** in the following tested applications.

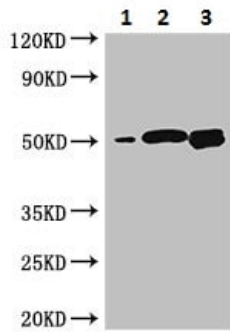
The application notes include recommended starting dilutions; optimal dilutions/concentrations should be determined by the end user.

Application	Abreviews	Notes
WB		1/2000 - 1/10000. Detects a band of approximately 51 kDa (predicted molecular weight: 50.4 kDa).
IHC-P		1/20 - 1/200.

Target

Function	Negative regulator of T cell proliferation.
Tissue specificity	Expressed in brain, heart, kidney, liver, pancreas, ovary, leukocyte, small intestine, testis and thymus.
Involvement in disease	Genetic variation in BTNL2 is a cause of susceptibility to sarcoidosis type 2 (SS2) [MIM:612387]. Sarcoidosis is an idiopathic, systemic, inflammatory disease characterized by the formation of immune granulomas in involved organs. Granulomas predominantly invade the lungs and the lymphatic system, but also skin, liver, spleen, eyes and other organs may be involved. Note=A nucleotide transition affecting a splice donor site results in the use of an alternative splice site and the production of isoform 3. Individuals expressing isoform 3 have a higher risk for sarcoidosis.
Sequence similarities	Belongs to the immunoglobulin superfamily. BTN/MOG family. Contains 3 Ig-like V-type (immunoglobulin-like) domains.
Cellular localization	Membrane. Isoform 2 is present in the nuclear, vesicle and plasma membranes, isoform 3 is found in cytoplasmic vesicle structures and is not membrane bound.

Images



Western blot - Anti-BTNL2 antibody (ab223053)

All lanes : Anti-BTNL2 antibody (ab223053) at 1/2000 dilution

Lane 1 : HEK-293 (human epithelial cell line from embryonic kidney) whole cell lysate

Lane 2 : K562 (human chronic myelogenous leukemia cell line from bone marrow) whole cell lysate

Lane 3 : Mouse brain lysate

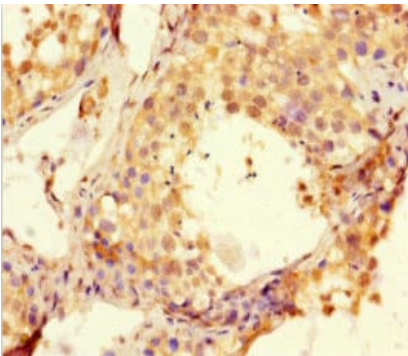
Secondary

All lanes : Goat Anti-Rabbit IgG at 1/50000 dilution

Predicted band size: 50.4 kDa

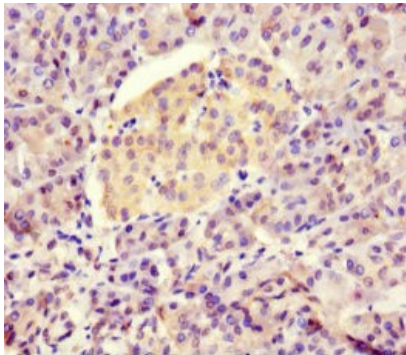
Observed band size: 51 kDa

[why is the actual band size different from the predicted?](#)



Immunohistochemistry (Formalin/PFA-fixed paraffin-embedded sections) - Anti-BTNL2 antibody (ab223053)

Paraffin embedded sections of human testis tissue were stained for BTNL2 with ab223053 at 1/100 dilution in immunohistochemical analysis.



Paraffin embedded sections of human pancreas tissue were stained for BTNL2 with ab223053 at 1/100 dilution in immunohistochemical analysis.

Immunohistochemistry (Formalin/PFA-fixed paraffin-embedded sections) - Anti-BTNL2 antibody (ab223053)

Please note: All products are "FOR RESEARCH USE ONLY. NOT FOR USE IN DIAGNOSTIC PROCEDURES"

Our Abpromise to you: Quality guaranteed and expert technical support

- Replacement or refund for products not performing as stated on the datasheet
- Valid for 12 months from date of delivery
- Response to your inquiry within 24 hours

- We provide support in Chinese, English, French, German, Japanese and Spanish
- Extensive multi-media technical resources to help you
- We investigate all quality concerns to ensure our products perform to the highest standards

If the product does not perform as described on this datasheet, we will offer a refund or replacement. For full details of the Abpromise, please visit <https://www.abcam.com/abpromise> or contact our technical team.

Terms and conditions

- Guarantee only valid for products bought direct from Abcam or one of our authorized distributors