

## Product datasheet

# Anti-C Reactive Protein antibody ab227507

1 References 3 Images

### Overview

---

<b>Product name</b>	Anti-C Reactive Protein antibody
<b>Description</b>	Rabbit polyclonal to C Reactive Protein
<b>Host species</b>	Rabbit
<b>Tested applications</b>	<b>Suitable for:</b> WB, IHC-P
<b>Species reactivity</b>	<b>Reacts with:</b> Rat, Human
<b>Immunogen</b>	Recombinant fragment within Human C Reactive Protein (internal sequence). The exact sequence is proprietary. Database link: <a href="#">P02741</a>
<b>Positive control</b>	WB: Rat plasma; NCI-H1299 and MOLT-4 whole cell lysates. IHC-P: Human colon tissue.
<b>General notes</b>	<p>Reproducibility is key to advancing scientific discovery and accelerating scientists' next breakthrough.</p> <p>Abcam is leading the way with our range of recombinant antibodies, knockout-validated antibodies and knockout cell lines, all of which support improved reproducibility.</p> <p>We are also planning to innovate the way in which we present recommended applications and species on our product datasheets, so that only applications &amp; species that have been tested in our own labs, our suppliers or by selected trusted collaborators are covered by our Abpromise™ guarantee.</p> <p>In preparation for this, we have started to update the applications &amp; species that this product is Abpromise guaranteed for.</p> <p>We are also updating the applications &amp; species that this product has been "predicted to work with," however this information is not covered by our Abpromise guarantee.</p> <p>Applications &amp; species from publications and Abreviews that have not been tested in our own labs or in those of our suppliers are not covered by the Abpromise guarantee.</p> <p>Please check that this product meets your needs before purchasing. If you have any questions, special requirements or concerns, please send us an inquiry and/or contact our Support team ahead of purchase. Recommended alternatives for this product can be found below, as well as customer reviews and Q&amp;As.</p>

### Properties

---

<b>Form</b>	Liquid
-------------	--------

<b>Storage instructions</b>	Shipped at 4°C. Store at +4°C short term (1-2 weeks). Upon delivery aliquot. Store at -20°C long term. Avoid freeze / thaw cycle.
<b>Storage buffer</b>	pH: 7.00 Preservative: 0.01% Thimerosal (merthiolate) Constituents: 1.21% Tris, 0.75% Glycine, 10% Glycerol (glycerin, glycerine)
<b>Purity</b>	Immunogen affinity purified
<b>Clonality</b>	Polyclonal
<b>Isotype</b>	IgG

## Applications

Our [Abpromise guarantee](#) covers the use of **ab227507** in the following tested applications.

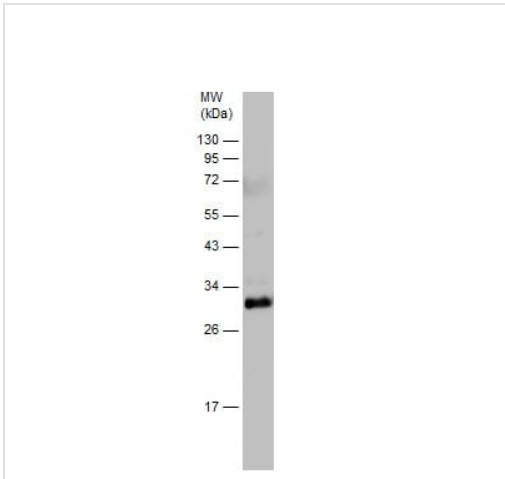
The application notes include recommended starting dilutions; optimal dilutions/concentrations should be determined by the end user.

Application	Abreviews	Notes
WB		1/500 - 1/10000. Predicted molecular weight: 25 kDa.
IHC-P		1/100 - 1/1000.

## Target

<b>Function</b>	Displays several functions associated with host defense: it promotes agglutination, bacterial capsular swelling, phagocytosis and complement fixation through its calcium-dependent binding to phosphorylcholine. Can interact with DNA and histones and may scavenge nuclear material released from damaged circulating cells.
<b>Tissue specificity</b>	Found in plasma.
<b>Sequence similarities</b>	Belongs to the pentaxin family. Contains 1 pentaxin domain.
<b>Cellular localization</b>	Secreted.

## Images

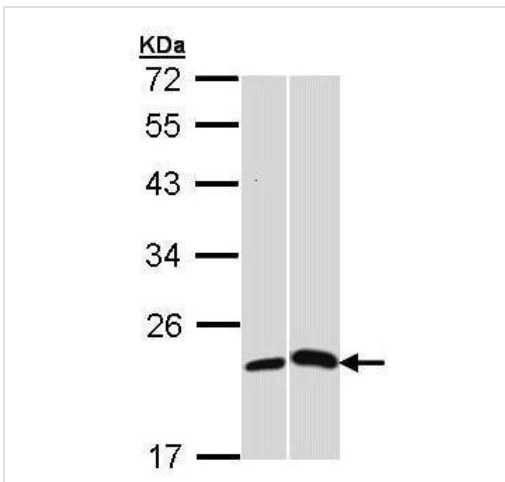


Western blot - Anti-C Reactive Protein antibody (ab227507)

Anti-C Reactive Protein antibody (ab227507) at 1/5000 dilution + Rat plasma at 50 µg

**Predicted band size:** 25 kDa

12% SDS-PAGE gel.



Western blot - Anti-C Reactive Protein antibody (ab227507)

**All lanes :** Anti-C Reactive Protein antibody (ab227507) at 1/1000 dilution

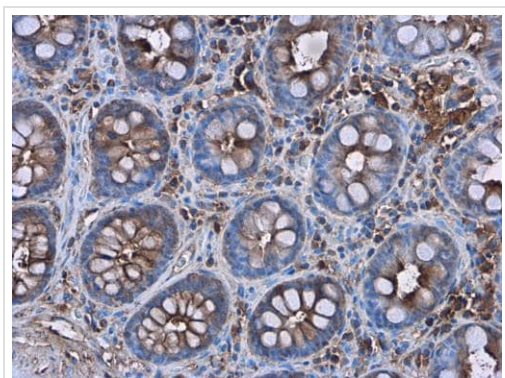
**Lane 1 :** NCI-H1299 (human lung carcinoma cell line) whole cell lysate

**Lane 2 :** MOLT-4 (human lymphoblastic leukemia cell line) whole cell lysate

Lysates/proteins at 30 µg per lane.

**Predicted band size:** 25 kDa

12% SDS-PAGE gel.



Immunohistochemistry (Formalin/PFA-fixed paraffin-embedded sections) - Anti-C Reactive Protein antibody (ab227507)

Paraffin-embedded human colon tissue stained for C Reactive Protein using ab227507 at 1/500 dilution in immunohistochemical analysis.

**Please note:** All products are "FOR RESEARCH USE ONLY. NOT FOR USE IN DIAGNOSTIC PROCEDURES"

### **Our Abpromise to you: Quality guaranteed and expert technical support**

---

- Replacement or refund for products not performing as stated on the datasheet
- Valid for 12 months from date of delivery
- Response to your inquiry within 24 hours
  
- We provide support in Chinese, English, French, German, Japanese and Spanish
- Extensive multi-media technical resources to help you
- We investigate all quality concerns to ensure our products perform to the highest standards

If the product does not perform as described on this datasheet, we will offer a refund or replacement. For full details of the Abpromise, please visit <https://www.abcam.com/abpromise> or contact our technical team.

### **Terms and conditions**

---

- Guarantee only valid for products bought direct from Abcam or one of our authorized distributors