

## Product datasheet

# Anti-C Reactive Protein antibody [Y284] ab32412

Recombinant RabMAb

★★★★★ 1 Abreviews 22 References 6 Images

### Overview

<b>Product name</b>	Anti-C Reactive Protein antibody [Y284]
<b>Description</b>	Rabbit monoclonal [Y284] to C Reactive Protein
<b>Host species</b>	Rabbit
<b>Specificity</b>	ab32412 recognises C Reactive Protein. This antibody is predicted to detect the splice isoform 2.
<b>Tested applications</b>	<b>Suitable for:</b> WB, IP, IHC-P <b>Unsuitable for:</b> ICC/IF
<b>Species reactivity</b>	<b>Reacts with:</b> Human
<b>Immunogen</b>	Synthetic peptide within Human C Reactive Protein aa 200 to the C-terminus (C terminal). The exact sequence is proprietary. (Peptide available as <a href="#">ab216758</a> )
<b>Epitope</b>	ab32412 reacts with an epitope located in the C terminal region of C Reactive Protein.
<b>Positive control</b>	WB: Human serum and plasma lysates. IHC-P: Normal human liver tissue. IP: HepG2 whole cell lysate.
<b>General notes</b>	Mouse, Rat: We have preliminary internal testing data to indicate this antibody may not react with these species. Please contact us for more information.

Our RabMAb<sup>®</sup> technology is a patented hybridoma-based technology for making rabbit monoclonal antibodies. For details on our patents, please refer to [RabMAb<sup>®</sup> patents](#).

**We are constantly working hard to ensure we provide our customers with best in class antibodies. As a result of this work we are pleased to now offer this antibody in purified format. We are in the process of updating our datasheets. The purified format is designated 'PUR' on our product labels. If you have any questions regarding this update, please contact our Scientific Support team.**

This product is a [recombinant rabbit monoclonal antibody](#).

### Properties

**Form** Liquid

<b>Storage instructions</b>	Shipped at 4°C. Store at +4°C short term (1-2 weeks). Upon delivery aliquot. Store at -20°C. Avoid freeze / thaw cycle.
<b>Storage buffer</b>	pH: 7.20 Preservative: 0.01% Sodium azide Constituents: 59% PBS, 40% Glycerol, 0.05% BSA
<b>Purity</b>	Protein A purified
<b>Clonality</b>	Monoclonal
<b>Clone number</b>	Y284
<b>Isotype</b>	IgG

## Applications

Our [Abpromise guarantee](#) covers the use of **ab32412** in the following tested applications.

The application notes include recommended starting dilutions; optimal dilutions/concentrations should be determined by the end user.

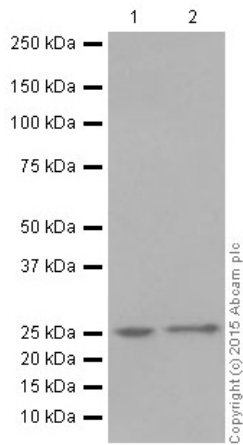
Application	Abreviews	Notes
WB		1/1000 - 1/2000. Predicted molecular weight: 25 kDa. Can be blocked with <a href="#">C Reactive Protein peptide (ab216758)</a> .
IP		1/30 - 1/50.
IHC-P	★★★★★	1/100 - 1/250.

**Application notes** Is unsuitable for ICC/IF.

## Target

<b>Function</b>	Displays several functions associated with host defense: it promotes agglutination, bacterial capsular swelling, phagocytosis and complement fixation through its calcium-dependent binding to phosphorylcholine. Can interact with DNA and histones and may scavenge nuclear material released from damaged circulating cells.
<b>Tissue specificity</b>	Found in plasma.
<b>Sequence similarities</b>	Belongs to the pentaxin family. Contains 1 pentaxin domain.
<b>Cellular localization</b>	Secreted.

## Images



Western blot - Anti-C Reactive Protein antibody [Y284] (ab32412)

**All lanes :** Anti-C Reactive Protein antibody [Y284] (ab32412) at 1/2000 dilution (purified)

**Lane 1 :** Human serum

**Lane 2 :** Human plasma

Lysates/proteins at 20 µg per lane.

**Secondary**

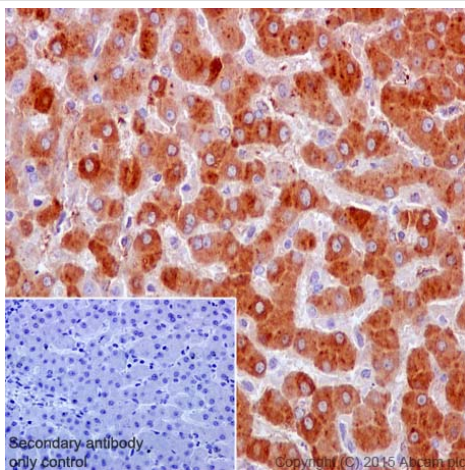
**All lanes :** HRP-conjugated anti-rabbit IgG, specific to the non-reduced form of IgG at 1/50000 dilution

**Predicted band size:** 25 kDa

**Observed band size:** 27 kDa

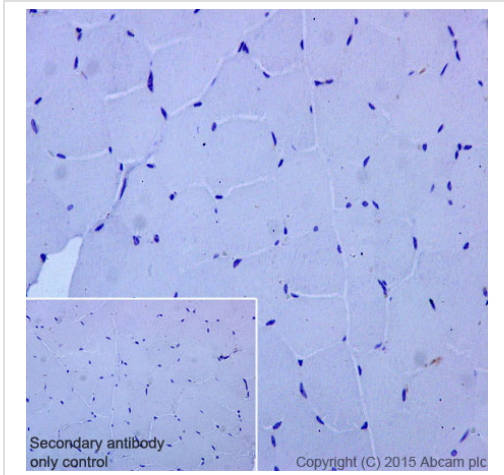
[why is the actual band size different from the predicted?](#)

Blocking and dilution buffer: 5% NFDM/TBST.



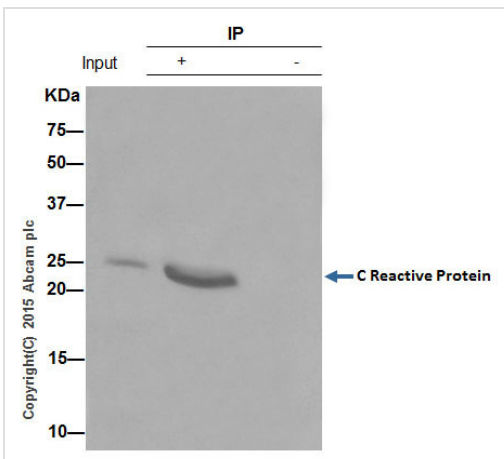
Immunohistochemistry (Formalin/PFA-fixed paraffin-embedded sections) - Anti-C Reactive Protein antibody [Y284] (ab32412)

Immunohistochemistry (Formalin/PFA-fixed paraffin-embedded sections) analysis of human liver tissue labelling C Reactive Protein with purified ab32412 at 1/100. Heat mediated antigen retrieval was performed using Tris/EDTA buffer pH 9. [ab97051](#), a HRP-conjugated goat anti-rabbit IgG (H+L) was used as the secondary antibody (1/500). Negative control using PBS instead of primary antibody. Counterstained with hematoxylin.



Immunohistochemistry (Formalin/PFA-fixed paraffin-embedded sections) - Anti-C Reactive Protein antibody [Y284] (ab32412)

Immunohistochemistry (Formalin/PFA-fixed paraffin-embedded sections) analysis of human skeletal muscle tissue labelling C Reactive Protein with purified ab32412 at 1/100. Heat mediated antigen retrieval was performed using Tris/EDTA buffer pH 9. ab97051, a HRP-conjugated goat anti-rabbit IgG (H+L) was used as the secondary antibody (1/500). Negative control using PBS instead of primary antibody. Counterstained with hematoxylin.



Immunoprecipitation - Anti-C Reactive Protein antibody [Y284] (ab32412)

ab32412 (purified) at 1/30 immunoprecipitating C Reactive Protein in HepG2 (human liver hepatocellular carcinoma cell line) whole cell lysate.

Lane 1 (input): HepG2 whole cell lysate (10µg)

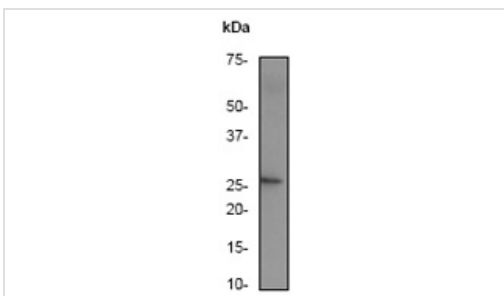
Lane 2 (+): ab32412 + HepG2 whole cell lysate.

Lane 3 (-): Rabbit monoclonal IgG (ab172730) instead of ab32412 in HepG2 whole cell lysate.

For western blotting, a HRP-conjugated anti-rabbit IgG, specific to the non-reduced form of IgG was used as the secondary antibody (1/1500).

Blocking buffer and concentration: 5% NFDM/TBST.

Diluting buffer and concentration: 5% NFDM /TBST.

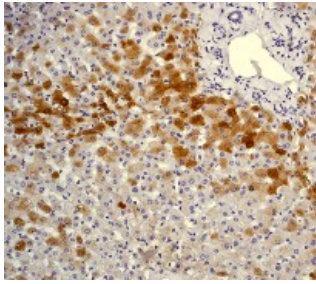


Western blot - Anti-C Reactive Protein antibody [Y284] (ab32412)

Anti-C Reactive Protein antibody [Y284] (ab32412) at 1/1000 dilution (unpurified) + Human serum

**Predicted band size:** 25 kDa

**Observed band size:** 27 kDa [why is the actual band size different from the predicted?](#)



Immunohistochemistry (Formalin/PFA-fixed paraffin-embedded) analysis of human normal liver tissue labelling C Reactive Protein using unpurified ab32412 at a dilution of 1/100.

Immunohistochemistry (Formalin/PFA-fixed paraffin-embedded sections) - Anti-C Reactive Protein antibody [Y284] (ab32412)

**Please note:** All products are "FOR RESEARCH USE ONLY AND ARE NOT INTENDED FOR DIAGNOSTIC OR THERAPEUTIC USE"

### Our Abpromise to you: Quality guaranteed and expert technical support

---

- Replacement or refund for products not performing as stated on the datasheet
- Valid for 12 months from date of delivery
- Response to your inquiry within 24 hours
- We provide support in Chinese, English, French, German, Japanese and Spanish
- Extensive multi-media technical resources to help you
- We investigate all quality concerns to ensure our products perform to the highest standards

If the product does not perform as described on this datasheet, we will offer a refund or replacement. For full details of the Abpromise, please visit <https://www.abcam.com/abpromise> or contact our technical team.

### Terms and conditions

---

- Guarantee only valid for products bought direct from Abcam or one of our authorized distributors