

Product datasheet

Anti-C10orf30 antibody - C-terminal ab171186

2 Images

Overview

Product name	Anti-C10orf30 antibody - C-terminal
Description	Rabbit polyclonal to C10orf30 - C-terminal
Host species	Rabbit
Tested applications	Suitable for: WB, IHC-P
Species reactivity	Reacts with: Mouse, Human
Immunogen	Synthetic peptide within Human C10orf30 aa 326-356 (C terminal) conjugated to Keyhole Limpet Haemocyanin (KLH). The exact sequence is proprietary. Database link: Q8N7W2
Positive control	Mouse liver tissue lysate, Human liver tissue.

Properties

Form	Liquid
Storage instructions	Shipped at 4°C. Store at +4°C short term (1-2 weeks). Upon delivery aliquot. Store at -20°C long term. Avoid freeze / thaw cycle.
Storage buffer	Preservative: 0.09% Sodium azide Constituent: 99% PBS
Purity	Immunogen affinity purified
Purification notes	ab171186 is purified through a protein A column, followed by peptide affinity purification.
Clonality	Polyclonal
Isotype	IgG

Applications

Our [Abpromise guarantee](#) covers the use of **ab171186** in the following tested applications.

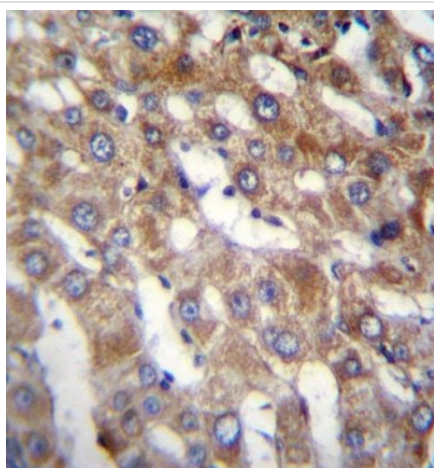
The application notes include recommended starting dilutions; optimal dilutions/concentrations should be determined by the end user.

Application	Abreviews	Notes
WB		1/100 - 1/500. Predicted molecular weight: 58 kDa.

Application	Abreviews	Notes
IHC-P		1/10 - 1/50. Perform heat mediated antigen retrieval with citrate buffer pH 6 before commencing with IHC staining protocol.

Target

Images



Immunohistochemical analysis of formalin-fixed, paraffin-embedded Human liver tissue, labeling C10orf30 with ab171186 at 1/10 dilution, followed by peroxidase conjugation of the secondary antibody and DAB staining.

Immunohistochemistry (Formalin/PFA-fixed paraffin-embedded sections) - Anti-C10orf30 antibody - C-terminal (ab171186)



Anti-C10orf30 antibody - C-terminal (ab171186) at 1/100 dilution + Mouse liver tissue lysate at 35 µg

Predicted band size: 58 kDa

Western blot - Anti-C10orf30 antibody - C-terminal (ab171186)

Please note: All products are "FOR RESEARCH USE ONLY AND ARE NOT INTENDED FOR DIAGNOSTIC OR THERAPEUTIC USE"

Our Abpromise to you: Quality guaranteed and expert technical support

- Replacement or refund for products not performing as stated on the datasheet

- Valid for 12 months from date of delivery
- Response to your inquiry within 24 hours

- We provide support in Chinese, English, French, German, Japanese and Spanish
- Extensive multi-media technical resources to help you
- We investigate all quality concerns to ensure our products perform to the highest standards

If the product does not perform as described on this datasheet, we will offer a refund or replacement. For full details of the Abpromise, please visit <https://www.abcam.com/abpromise> or contact our technical team.

Terms and conditions

- Guarantee only valid for products bought direct from Abcam or one of our authorized distributors