


Product datasheet

Anti-C12orf69 antibody ab125331

1 Image

Overview

|                            |   |
|----------------------------|---|
| <b>Product name</b>        | Anti-C12orf69 antibody  |
| <b>Description</b>         | Rabbit polyclonal to C12orf69   |
| <b>Host species</b>        | Rabbit  |
| <b>Tested applications</b> | <b>Suitable for:</b> WB   |
| <b>Species reactivity</b>  | <b>Reacts with:</b> Mouse<br><b>Predicted to work with:</b> Rat, Rabbit, Horse, Cow, Cat, Dog, Human, Pig                |
| <b>Immunogen</b>           | Synthetic peptide corresponding to a region within internal sequence amino acids 80-129 of Mouse C12orf69 (XP_910672; Q8BQM7).<br><a href="#">Run BLAST with ExPASy</a> <a href="#">Run BLAST with NCBI</a> |
| <b>Positive control</b>    | Mouse brain lysate  |

Properties

|                             |   |
|-----------------------------|---|
| <b>Form</b>                 | Liquid  |
| <b>Storage instructions</b> | Shipped at 4°C. Upon delivery aliquot and store at -20°C. Avoid freeze / thaw cycles. |
| <b>Storage buffer</b>       | Preservative: 0.09% Sodium azide<br>Constituents: 2% Sucrose, PBS                     |
| <b>Purity</b>               | Immunogen affinity purified   |
| <b>Clonality</b>            | Polyclonal  |
| <b>Isotype</b>              | IgG   |

Applications

Our [Abpromise guarantee](#) covers the use of **ab125331** in the following tested applications.

The application notes include recommended starting dilutions; optimal dilutions/concentrations should be determined by the end user.

| Application | Abreviews | Notes  |
|-------------|-----------|--|
| WB          |           | Use a concentration of 1 µg/ml. Predicted molecular weight: 25 kDa. Good results were obtained when blocked with 5% non-fat dry milk in 0.05% PBS-T. |

## Target

---

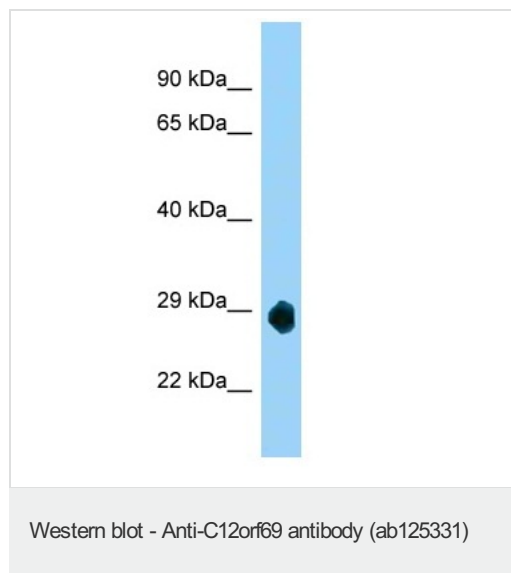
### Cellular localization

Membrane.

---

## Images

---



Anti-C12orf69 antibody (ab125331) at 1 µg/ml + Mouse brain lysate at 10 µg

**Predicted band size:** 25 kDa

Gel concentration: 12%

**Please note:** All products are "FOR RESEARCH USE ONLY AND ARE NOT INTENDED FOR DIAGNOSTIC OR THERAPEUTIC USE"

## Our Abpromise to you: Quality guaranteed and expert technical support

---

- Replacement or refund for products not performing as stated on the datasheet
- Valid for 12 months from date of delivery
- Response to your inquiry within 24 hours
- We provide support in Chinese, English, French, German, Japanese and Spanish
- Extensive multi-media technical resources to help you
- We investigate all quality concerns to ensure our products perform to the highest standards

If the product does not perform as described on this datasheet, we will offer a refund or replacement. For full details of the Abpromise, please visit <https://www.abcam.com/abpromise> or contact our technical team.

## Terms and conditions

---

- Guarantee only valid for products bought direct from Abcam or one of our authorized distributors