

Product datasheet

Anti-C14orf142 antibody ab151146

2 Images

Overview

Product name	Anti-C14orf142 antibody
Description	Rabbit polyclonal to C14orf142
Host species	Rabbit

Tested Applications & Species

Application	Species
ICC/IF	Human
IHC-P	Human

See all applications and species data

Immunogen Recombinant fragment, corresponding to amino acids 55-93 of Human C14orf142.

[Run BLAST with ExPASy](#) [Run BLAST with NCBI](#)

Positive control Human kidney tissue.

General notes The antibody solution should be gently mixed before use.

The Life Science industry has been in the grips of a reproducibility crisis for a number of years. Abcam is leading the way in addressing the problem with our range of recombinant monoclonal antibodies and knockout edited cell lines for gold-standard validation.

One factor contributing to the crisis is the use of antibodies that are not suitable. This can lead to misleading results and the use of incorrect data informing project assumptions and direction. To help address this challenge, we have introduced an application and species grid on our primary antibody datasheets to make it easy to simplify identification of the right antibody for your needs.

Learn more [here](#).

Properties

Form	Liquid
Storage instructions	Shipped at 4°C. Upon delivery aliquot and store at -20°C. Avoid repeated freeze / thaw cycles.
Storage buffer	pH: 7.20 Preservative: 0.02% Sodium azide

Constituents: 59% PBS, 40% Glycerol (glycerin, glycerine)



Purity	Immunogen affinity purified
Clonality	Polyclonal
Isotype	IgG

Applications

The Abpromise guarantee Our [Abpromise guarantee](#) covers the use of **ab151146** in the following tested applications.

The application notes include recommended starting dilutions; optimal dilutions/concentrations should be determined by the end user.

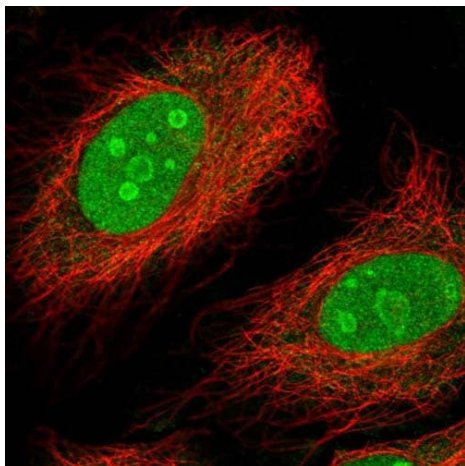
 Guaranteed Tested applications are guaranteed to work and covered by our Abpromise guarantee.	 Predicted Predicted to work for this combination of applications and species but not guaranteed.	 Incompatible Does not work for this combination of applications and species.
--	--	--

Application	Species
ICC/IF	 Human
IHC-P	 Human

Application	Abreviews	Notes
IHC-P		1/500 - 1/1000. Perform heat mediated antigen retrieval with citrate buffer pH 6 before commencing with IHC staining protocol.
ICC/IF		Use a concentration of 0.25 - 2 µg/ml.

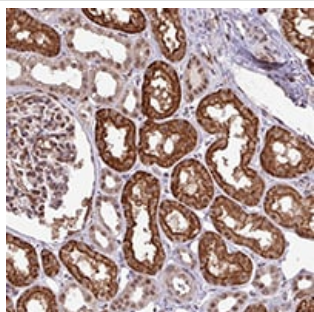
Target

Images



Immunocytochemistry/ Immunofluorescence - Anti-C14orf142 antibody (ab151146)

Immunofluorescent staining of Human cell line HeLa shows positivity in nucleus and nucleoli. Recommended concentration of ab151146 1-4 $\mu\text{g/ml}$. Cells treated with PFA/Triton X-100.



Immunohistochemistry (Formalin/PFA-fixed paraffin-embedded sections) - Anti-C14orf142 antibody (ab151146)

Immunohistochemical analysis of paraffin-embedded Human kidney tissue labeling C14orf142 with ab151146 at 1/500 dilution.

Please note: All products are "FOR RESEARCH USE ONLY. NOT FOR USE IN DIAGNOSTIC PROCEDURES"

Our Abpromise to you: Quality guaranteed and expert technical support

- Replacement or refund for products not performing as stated on the datasheet
- Valid for 12 months from date of delivery
- Response to your inquiry within 24 hours
- We provide support in Chinese, English, French, German, Japanese and Spanish
- Extensive multi-media technical resources to help you
- We investigate all quality concerns to ensure our products perform to the highest standards

If the product does not perform as described on this datasheet, we will offer a refund or replacement. For full details of the Abpromise, please visit <https://www.abcam.com/abpromise> or contact our technical team.

Terms and conditions

- Guarantee only valid for products bought direct from Abcam or one of our authorized distributors