

Product datasheet

Anti-C17orf58 antibody [OTI6E9] ab236376

1 Image



Overview

Product name	Anti-C17orf58 antibody [OTI6E9]
Description	Mouse monoclonal [OTI6E9] to C17orf58
Host species	Mouse

Tested Applications & Species

Application	Species
WB	 Human

[See all applications and species data](#) ↓

Immunogen	Recombinant full length protein corresponding to Human C17orf58 aa 1 to the C-terminus. (NP_858041) produced in E.coli. Database link: Q2M2W7-1  Run BLAST with  Run BLAST with
Positive control	WB: pCMV6-ENTRY C17orf58 cDNA transfected HEK-293T cell lysate.
General notes	Clone OTI6E9 (formerly 6E9).




Properties


Form	Liquid
Storage instructions	Shipped at 4°C. Store at +4°C short term (1-2 weeks). Upon delivery aliquot. Store at -20°C long term. Avoid freeze / thaw cycle.
Storage buffer	pH: 7.30 Preservative: 0.02% Sodium azide Constituents: PBS, 1% BSA, 50% Glycerol
Purity	Affinity purified
Purification notes	Purified from cell culture supernatant.
Clonality	Monoclonal
Clone number	OTI6E9
Isotype	IgG2b

Applications

The Abpromise guarantee Our [Abpromise guarantee](#) covers the use of **ab236376** in the following tested applications.

The application notes include recommended starting dilutions; optimal dilutions/concentrations should be determined by the end user.

 Guaranteed Tested applications are guaranteed to work and covered by our Abpromise guarantee.	 Predicted Predicted to work for this combination of applications and species but not guaranteed.	 Incompatible Does not work for this combination of applications and species.
--	--	--

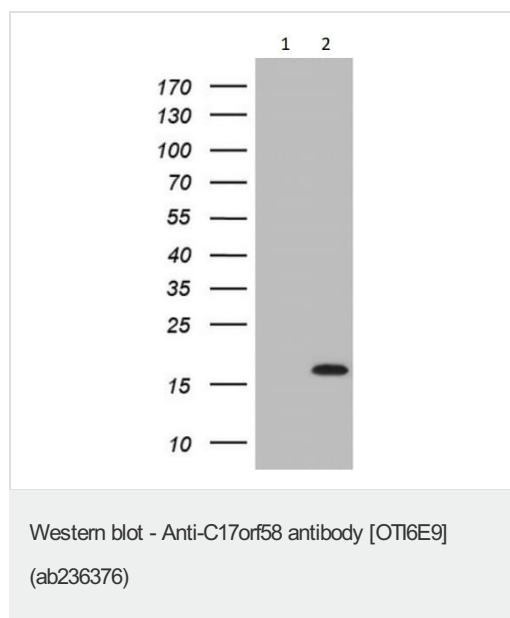
Application	Species
WB	 Human

Application	Abreviews	Notes
WB		1/2000. Predicted molecular weight: 11 kDa.

Target

Sequence similarities Belongs to the UPF0450 family.

Images



All lanes : Anti-C17orf58 antibody [OTI6E9] (ab236376) at 1/2000 dilution

Lane 1 : pCMV6-ENTRY control cDNA transfected HEK-293T (human epithelial cell line from embryonic kidney transformed with large T antigen) cell lysate

Lane 2 : pCMV6-ENTRY C17orf58 cDNA transfected HEK-293T (human epithelial cell line from embryonic kidney transformed with large T antigen) cell lysate

Lysates/proteins at 5 µg per lane.

Predicted band size: 11 kDa

Please note: All products are "FOR RESEARCH USE ONLY. NOT FOR USE IN DIAGNOSTIC PROCEDURES"

Our Abpromise to you: Quality guaranteed and expert technical support

- Replacement or refund for products not performing as stated on the datasheet
- Valid for 12 months from date of delivery
- Response to your inquiry within 24 hours

- We provide support in Chinese, English, French, German, Japanese and Spanish
- Extensive multi-media technical resources to help you
- We investigate all quality concerns to ensure our products perform to the highest standards

If the product does not perform as described on this datasheet, we will offer a refund or replacement. For full details of the Abpromise, please visit <https://www.abcam.com/abpromise> or contact our technical team.

Terms and conditions

- Guarantee only valid for products bought direct from Abcam or one of our authorized distributors