



Product datasheet

Anti-C18orf22/RBFA antibody ab224741

3 Images

Overview

Product name	Anti-C18orf22/RBFA antibody
Description	Rabbit polyclonal to C18orf22/RBFA
Host species	Rabbit
Tested applications	Suitable for: WB, IHC-P
Species reactivity	Reacts with: Mouse, Rat, Human
Immunogen	Recombinant fragment corresponding to Human C18orf22/RBFA aa 201-343. Sequence: DFGPRDERDNFVQNDFRDPDAPQPCGTTEPTSSSLCGI DHEALNKQIME YKRRKDKGLGGLVWQGQVAELTTQMKKGRKRAKPRLEQ DSSLKSYLSGEE VEDDLDLVGAPEYECYAPDTEELEAERGGGRTEDGHSC GASRE Database link: Q8NOV3-1 <div style="display: inline-block; margin-left: 20px;">   </div>
Positive control	WB: Mouse brain tissue lysate - total protein (ab4022), HeLa, A549 and HepG2 whole cell lysate (ab7900). IHC-P: Human ovarian cancer tissue. Human lung tissue.
General notes	This product was previously labelled as C18orf22

Reproducibility is key to advancing scientific discovery and accelerating scientists' next breakthrough.

Abcam is leading the way with our range of recombinant antibodies, knockout-validated antibodies and knockout cell lines, all of which support improved reproducibility.

We are also planning to innovate the way in which we present recommended applications and species on our product datasheets, so that only applications & species that have been tested in our own labs, our suppliers or by selected trusted collaborators are covered by our Abpromise™ guarantee.

In preparation for this, we have started to update the applications & species that this product is Abpromise guaranteed for.

We are also updating the applications & species that this product has been “predicted to work with,” however this information is not covered by our Abpromise guarantee.

Applications & species from publications and Abreviews that have not been tested in our own labs or in those of our suppliers are not covered by the Abpromise guarantee.

Please check that this product meets your needs before purchasing. If you have any questions, special requirements or concerns, please send us an inquiry and/or contact our Support team ahead of purchase. Recommended alternatives for this product can be found below, as well as customer reviews and Q&As.

Properties

Form	Liquid
Storage instructions	Shipped at 4°C. Store at +4°C short term (1-2 weeks). Upon delivery aliquot. Store at -20°C long term. Avoid freeze / thaw cycle.
Storage buffer	pH: 7.40 Constituents: 50% Glycerol (glycerin, glycerine), PBS, 0.03% Proclin 300
Purity	Protein G purified
Clonality	Polyclonal
Isotype	IgG

Applications

Our [Abpromise guarantee](#) covers the use of **ab224741** in the following tested applications.

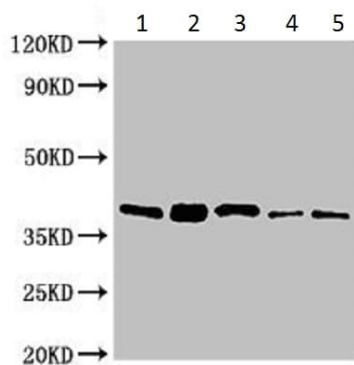
The application notes include recommended starting dilutions; optimal dilutions/concentrations should be determined by the end user.

Application	Abreviews	Notes
WB		1/500 - 1/5000.
IHC-P		1/20 - 1/200.

Target

Sequence similarities	Belongs to the rbfA family.
Cellular localization	Mitochondrion.

Images



Western blot - Anti-C18orf22/RBFA antibody (ab224741)

All lanes : Anti-C18orf22/RBFA antibody (ab224741) at 1/500 dilution

Lane 1 : HeLa (human epithelial cell line from cervix adenocarcinoma) whole cell lysate

Lane 2 : A549 (human lung carcinoma cell line) whole cell lysate

Lane 3 : HepG2 (human liver hepatocellular carcinoma cell line) whole cell lysate

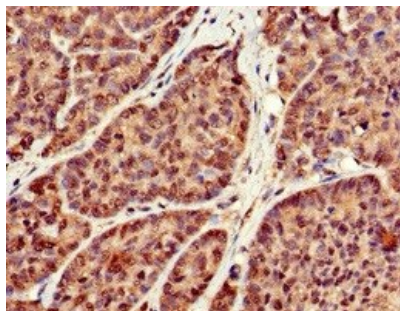
Lane 4 : Mouse brain tissue lysate

Lane 5 : Rat heart tissue lysate

Secondary

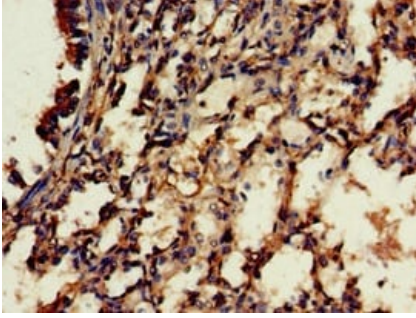
All lanes : Goat polyclonal to rabbit IgG at 1/50000 dilution

Developed using the ECL technique.



Immunohistochemistry (Formalin/PFA-fixed paraffin-embedded sections) - Anti-C18orf22/RBFA antibody (ab224741)

Paraffin embedded human ovarian cancer tissue stained for C18orf22/RBFA with ab224741 (1/100 dilution) in immunohistochemical analysis.



Paraffin embedded human lung tissue stained for C18orf22/RBFA with ab224741 (1/100 dilution) in immunohistochemical analysis.

Immunohistochemistry (Formalin/PFA-fixed paraffin-embedded sections) - Anti-C18orf22/RBFA antibody (ab224741)

Please note: All products are "FOR RESEARCH USE ONLY. NOT FOR USE IN DIAGNOSTIC PROCEDURES"

Our Abpromise to you: Quality guaranteed and expert technical support

- Replacement or refund for products not performing as stated on the datasheet
- Valid for 12 months from date of delivery
- Response to your inquiry within 24 hours
- We provide support in Chinese, English, French, German, Japanese and Spanish
- Extensive multi-media technical resources to help you
- We investigate all quality concerns to ensure our products perform to the highest standards

If the product does not perform as described on this datasheet, we will offer a refund or replacement. For full details of the Abpromise, please visit <https://www.abcam.com/abpromise> or contact our technical team.

Terms and conditions

- Guarantee only valid for products bought direct from Abcam or one of our authorized distributors