

Product datasheet

Anti-C1r antibody ab155060

[1 References](#) [2 Images](#)

Overview

Product name	Anti-C1r antibody
Description	Rabbit polyclonal to C1r
Host species	Rabbit
Tested applications	Suitable for: WB, ICC/IF
Species reactivity	Reacts with: Human
Immunogen	Recombinant fragment, corresponding to a region within amino acids 277-705 of Human C1r (Uniprot ID: P00736).
Positive control	MOLT4 and Raji whole cell lysates; HCT116 cells.
General notes	<p>The Life Science industry has been in the grips of a reproducibility crisis for a number of years. Abcam is leading the way in addressing this with our range of recombinant monoclonal antibodies and knockout edited cell lines for gold-standard validation. Please check that this product meets your needs before purchasing.</p> <p>If you have any questions, special requirements or concerns, please send us an inquiry and/or contact our Support team ahead of purchase. Recommended alternatives for this product can be found below, along with publications, customer reviews and Q&As</p>

Properties

Form	Liquid
Storage instructions	Shipped at 4°C. Upon delivery aliquot. Store at -20°C or -80°C. Avoid freeze / thaw cycle.
Storage buffer	pH: 7.00 Preservative: 0.01% Thimerosal (merthiolate) Constituents: 1.21% Tris, 0.75% Glycine, 10% Glycerol (glycerin, glycerine)
Purity	Immunogen affinity purified
Clonality	Polyclonal
Isotype	IgG

Applications

The Abpromise guarantee Our [Abpromise guarantee](#) covers the use of ab155060 in the following tested applications.

The application notes include recommended starting dilutions; optimal dilutions/concentrations should be determined by the end user.

Application	Abreviews	Notes
WB		1/500 - 1/3000. Predicted molecular weight: 80 kDa.
ICC/IF		1/100 - 1/1000.

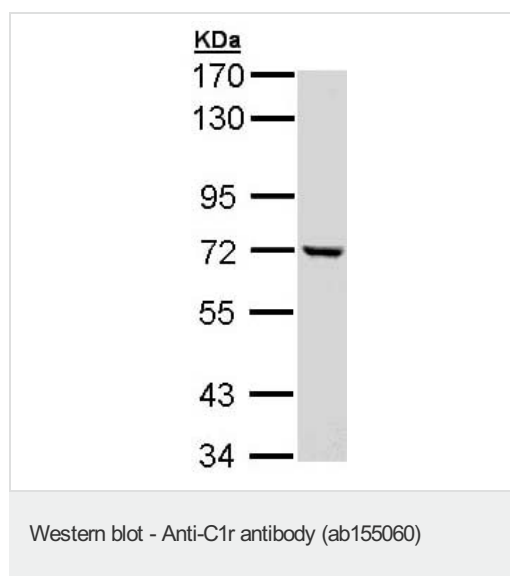
Target

Function C1r B chain is a serine protease that combines with C1q and C1s to form C1, the first component of the classical pathway of the complement system.

Sequence similarities Belongs to the peptidase S1 family.
Contains 2 CUB domains.
Contains 1 EGF-like domain.
Contains 1 peptidase S1 domain.
Contains 2 Sushi (CCP/SCR) domains.

Post-translational modifications The iron and 2-oxoglutarate dependent 3-hydroxylation of aspartate and asparagine is (R) stereospecific within EGF domains.

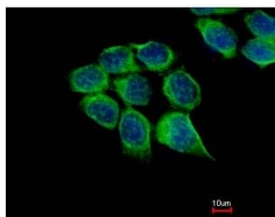
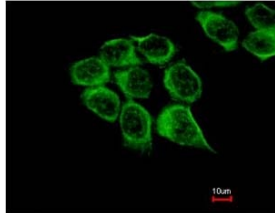
Images



Anti-C1r antibody (ab155060) at 1/1000 dilution + MOLT4 whole cell lysate at 30 µg

Predicted band size: 80 kDa

7.5% SDS-PAGE.



Immunofluorescent analysis of methanol-fixed HCT116 cells labeling C1r with ab155060 at 1/500 dilution. Lower image shows cells co-stained with Hoechst 33342.

Immunocytochemistry/ Immunofluorescence - Anti-C1r antibody (ab155060)

Please note: All products are "FOR RESEARCH USE ONLY. NOT FOR USE IN DIAGNOSTIC PROCEDURES"

Our Abpromise to you: Quality guaranteed and expert technical support

- Replacement or refund for products not performing as stated on the datasheet
- Valid for 12 months from date of delivery
- Response to your inquiry within 24 hours
- We provide support in Chinese, English, French, German, Japanese and Spanish
- Extensive multi-media technical resources to help you
- We investigate all quality concerns to ensure our products perform to the highest standards

If the product does not perform as described on this datasheet, we will offer a refund or replacement. For full details of the Abpromise, please visit <https://www.abcam.com/abpromise> or contact our technical team.

Terms and conditions

- Guarantee only valid for products bought direct from Abcam or one of our authorized distributors