




Product datasheet

Anti-C20orf112/NOL4L antibody ab237758

6 Images

Overview

Product name	Anti-C20orf112/NOL4L antibody
Description	Rabbit polyclonal to C20orf112/NOL4L
Host species	Rabbit
Tested applications	Suitable for: WB, IHC-P, ICC/IF
Species reactivity	Reacts with: Human Predicted to work with: Mouse, Orangutan 
Immunogen	Recombinant fragment corresponding to Human C20orf112/NOL4L aa 101-300. Sequence: LGTASYPSDGCADGLRSRVKYGVKTTPEPPYSSGS YDSIKTEVSGCPE DLTVGRAPTADDDDDHDDHEDNDKMNDSEGMDPE RLKAFNMFVRLFVDE NLDRMVPISKQPKEKIQAIIESCSRQFPEFQERARKRIR TYLKSCRRMKK NGMEMTRPTPHLTSAMAENILAAACESETRKAAKRM RLEIYQSSQDEPI Database link: Q96MY1  Run BLAST with  Run BLAST with
Positive control	WB: PC-3, A549, HepG2 and K562 whole cell lysates. IHC-P: Human thyroid, testis, small intestine and adrenal gland tissues. ICC/IF: HeLa cells.
General notes	This product was previously labelled as C20orf112

Properties

Form	Liquid
Storage instructions	Shipped at 4°C. Store at +4°C short term (1-2 weeks). Upon delivery aliquot. Store at -20°C long term. Avoid freeze / thaw cycle.
Storage buffer	pH: 7.40 Preservative: 0.03% Proclin Constituents: 50% Glycerol, PBS

Purity	Protein G purified
Purification notes	Purity greater than 95%.
Clonality	Polyclonal
Isotype	IgG

Applications

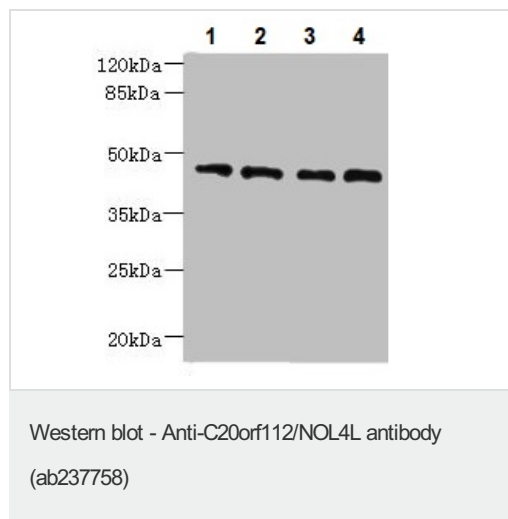
Our [Abpromise guarantee](#) covers the use of **ab237758** in the following tested applications.

The application notes include recommended starting dilutions; optimal dilutions/concentrations should be determined by the end user.

Application	Abreviews	Notes
WB		1/500 - 1/5000. Predicted molecular weight: 47 kDa.
IHC-P		1/20 - 1/200.
ICC/IF		1/50 - 1/200.

Target

Images



All lanes : Anti-C20orf112/NOL4L antibody (ab237758) at 1/500 dilution

Lane 1 : PC-3 (human prostate adenocarcinoma cell line) whole cell lysate

Lane 2 : A549 (human lung carcinoma cell line) whole cell lysate

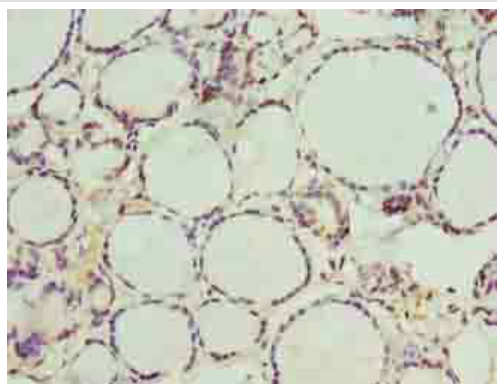
Lane 3 : HepG2 (human liver hepatocellular carcinoma cell line) whole cell lysate

Lane 4 : K562 (human chronic myelogenous leukemia cell line from bone marrow) whole cell lysate

Secondary

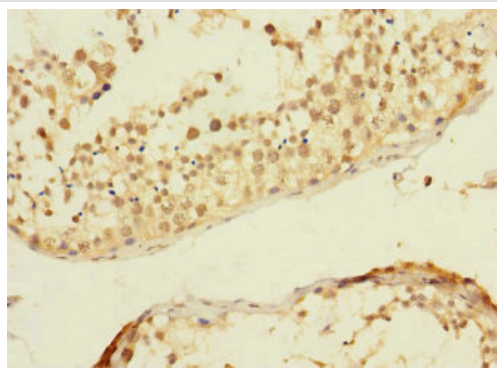
All lanes : Goat polyclonal to Rabbit IgG at 1/10000 dilution

Predicted band size: 47 kDa



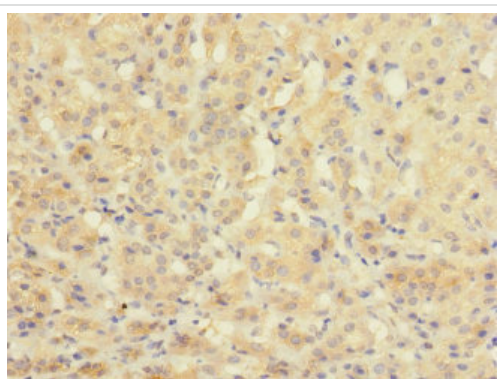
Immunohistochemistry (Formalin/PFA-fixed paraffin-embedded sections) - Anti-C20orf112/NOL4L antibody (ab237758)

Paraffin-embedded human thyroid tissue stained for C20orf112/NOL4L with ab237758 at 1/100 dilution in immunohistochemical analysis.



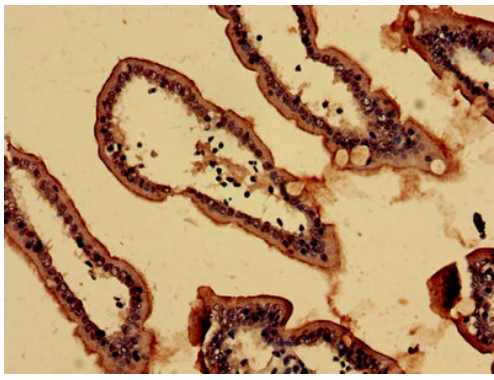
Immunohistochemistry (Formalin/PFA-fixed paraffin-embedded sections) - Anti-C20orf112/NOL4L antibody (ab237758)

Paraffin-embedded human testis tissue stained for C20orf112/NOL4L with ab237758 at 1/100 dilution in immunohistochemical analysis.



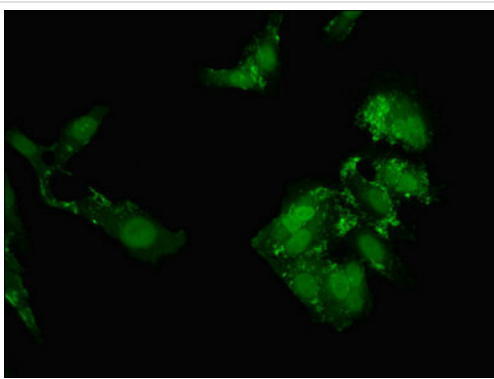
Immunohistochemistry (Formalin/PFA-fixed paraffin-embedded sections) - Anti-C20orf112/NOL4L antibody (ab237758)

Paraffin-embedded human adrenal gland tissue stained for C20orf112/NOL4L with ab237758 at 1/100 dilution in immunohistochemical analysis.



Immunohistochemistry (Formalin/PFA-fixed paraffin-embedded sections) - Anti-C20orf112/NOL4L antibody (ab237758)

Paraffin-embedded human small intestine tissue stained for C20orf112/NOL4L with ab237758 at 1/100 dilution in immunohistochemical analysis.



Immunocytochemistry/ Immunofluorescence - Anti-C20orf112/NOL4L antibody (ab237758)

HeLa (human epithelial cell line from cervix adenocarcinoma) cells stained for C20orf112/NOL4L (green) using ab237758 at 1/100 dilution in ICC/IF, followed by Alexa Fluor 488[®] conjugated Goat Anti-Rabbit IgG (H+L).

Please note: All products are "FOR RESEARCH USE ONLY. NOT FOR USE IN DIAGNOSTIC PROCEDURES"

Our Abpromise to you: Quality guaranteed and expert technical support

- Replacement or refund for products not performing as stated on the datasheet
- Valid for 12 months from date of delivery
- Response to your inquiry within 24 hours
- We provide support in Chinese, English, French, German, Japanese and Spanish
- Extensive multi-media technical resources to help you
- We investigate all quality concerns to ensure our products perform to the highest standards

If the product does not perform as described on this datasheet, we will offer a refund or replacement. For full details of the Abpromise, please visit <https://www.abcam.com/abpromise> or contact our technical team.

Terms and conditions

- Guarantee only valid for products bought direct from Abcam or one of our authorized distributors