

Product datasheet

Anti-C2orf83 antibody - C-terminal ab173933

1 Image

Overview

|                            |  |
|----------------------------|--|
| <b>Product name</b>        | Anti-C2orf83 antibody - C-terminal   |
| <b>Description</b>         | Rabbit polyclonal to C2orf83 - C-terminal  |
| <b>Host species</b>        | Rabbit   |
| <b>Tested applications</b> | <b>Suitable for:</b> WB  |
| <b>Species reactivity</b>  | <b>Reacts with:</b> Human  |
| <b>Immunogen</b>           | Synthetic peptide within Human C2orf83 aa 110-138 (C terminal) conjugated to Keyhole Limpet Haemocyanin (KLH). The exact sequence is proprietary.<br>Database link: <a href="#">Q53S99</a> |
| <b>Positive control</b>    | CEM cell lysate.   |

Properties

|                             |   |
|-----------------------------|---|
| <b>Form</b>                 | Liquid  |
| <b>Storage instructions</b> | Shipped at 4°C. Store at +4°C short term (1-2 weeks). Upon delivery aliquot. Store at -20°C long term. Avoid freeze / thaw cycle. |
| <b>Storage buffer</b>       | Preservative: 0.09% Sodium azide<br>Constituent: 99% PBS  |
| <b>Purity</b>               | Immunogen affinity purified   |
| <b>Purification notes</b>   | ab173933 is purified through a protein A column, followed by peptide affinity purification.                                       |
| <b>Clonality</b>            | Polyclonal  |
| <b>Isotype</b>              | IgG   |

Applications

Our [Abpromise guarantee](#) covers the use of **ab173933** in the following tested applications.

The application notes include recommended starting dilutions; optimal dilutions/concentrations should be determined by the end user.

| Application | Abreviews | Notes  |
|-------------|-----------|--|
| WB          |           | 1/100 - 1/500. Predicted molecular weight: 16 kDa. |

## Target

---

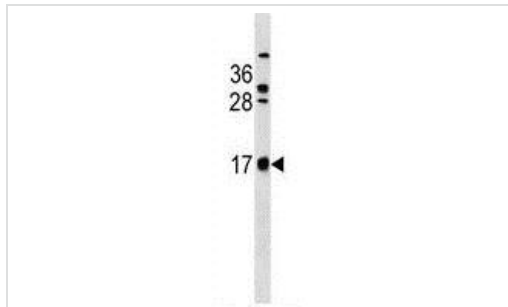
### Sequence similarities

Belongs to the reduced folate carrier (RFC) transporter (TC 2.A.48) family.

---

## Images

---



Anti-C2orf83 antibody - C-terminal (ab173933) at 1/100 dilution +  
CEM cell lysate at 35 µg

**Predicted band size:** 16 kDa

Western blot - Anti-C2orf83 antibody - C-terminal  
(ab173933)

**Please note:** All products are "FOR RESEARCH USE ONLY AND ARE NOT INTENDED FOR DIAGNOSTIC OR THERAPEUTIC USE"

## Our Abpromise to you: Quality guaranteed and expert technical support

---

- Replacement or refund for products not performing as stated on the datasheet
- Valid for 12 months from date of delivery
- Response to your inquiry within 24 hours
- We provide support in Chinese, English, French, German, Japanese and Spanish
- Extensive multi-media technical resources to help you
- We investigate all quality concerns to ensure our products perform to the highest standards

If the product does not perform as described on this datasheet, we will offer a refund or replacement. For full details of the Abpromise, please visit <https://www.abcam.com/abpromise> or contact our technical team.

## Terms and conditions

---

- Guarantee only valid for products bought direct from Abcam or one of our authorized distributors