



Product datasheet

Anti-C3orf18 antibody ab236674

4 Images

Overview

| | |
|----------------------------|--|
| Product name | Anti-C3orf18 antibody |
| Description | Rabbit polyclonal to C3orf18 |
| Host species | Rabbit |
| Tested applications | Suitable for: WB, ICC/IF, IHC-P |
| Species reactivity | Reacts with: Mouse, Human |
| Immunogen | <p>Recombinant fragment corresponding to Human C3orf18 aa 83-162. Sequence:</p> <p>RKKKRLEKLRHQLMPMYNFDPTTEEQDELEQELLEHGRDA ASVQAATSVQA MQGKTTLPSQGPLQRPSRLVFTDVANAIHA</p> <p>Database link: Q9UK00</p> <p style="text-align: right;"> Run BLAST with  Run BLAST with</p> |
| Positive control | WB: Mouse kidney, spleen and lung tissue lysates. IHC-P: Human brain and adrenal gland tissues. ICC/IF: HepG2 cells. |
| General notes | <p>Reproducibility is key to advancing scientific discovery and accelerating scientists' next breakthrough.</p> <p>Abcam is leading the way with our range of recombinant antibodies, knockout-validated antibodies and knockout cell lines, all of which support improved reproducibility.</p> <p>We are also planning to innovate the way in which we present recommended applications and species on our product datasheets, so that only applications & species that have been tested in our own labs, our suppliers or by selected trusted collaborators are covered by our Abpromise™ guarantee.</p> <p>In preparation for this, we have started to update the applications & species that this product is Abpromise guaranteed for.</p> <p>We are also updating the applications & species that this product has been “predicted to work with,” however this information is not covered by our Abpromise guarantee.</p> <p>Applications & species from publications and Abreviews that have not been tested in our own labs or in those of our suppliers are not covered by the Abpromise guarantee.</p> <p>Please check that this product meets your needs before purchasing. If you have any questions, special requirements or concerns, please send us an inquiry and/or contact our Support team ahead of purchase. Recommended alternatives for this product can be found below, as well as</p> |

customer reviews and Q&As.

Properties

| | |
|-----------------------------|---|
| Form | Liquid |
| Storage instructions | Shipped at 4°C. Store at +4°C short term (1-2 weeks). Upon delivery aliquot. Store at -20°C long term. Avoid freeze / thaw cycle. |
| Storage buffer | pH: 7.40 Constituents: PBS, 50% Glycerol (glycerin, glycerine), 0.03% Proclin 300 |
| Purity | Protein G purified |
| Purification notes | Purity >95%. |
| Clonality | Polyclonal |
| Isotype | IgG |

Applications

Our [Abpromise guarantee](#) covers the use of **ab236674** in the following tested applications.

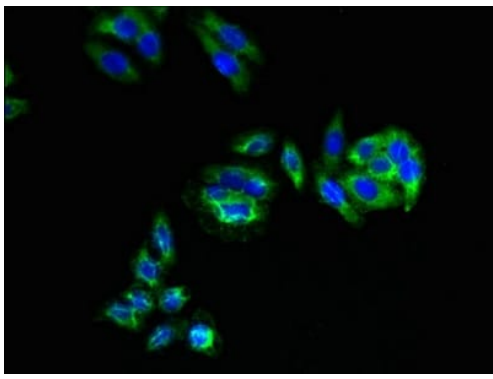
The application notes include recommended starting dilutions; optimal dilutions/concentrations should be determined by the end user.

| Application | Abreviews | Notes |
|-------------|-----------|---|
| WB | | 1/500 - 1/2000. Predicted molecular weight: 17 kDa. |
| ICC/IF | | 1/50 - 1/200. |
| IHC-P | | 1/20 - 1/200. |

Target

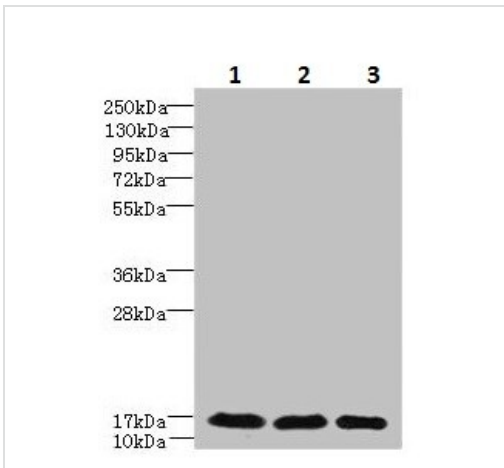
| | |
|------------------------------|-----------|
| Cellular localization | Membrane. |
|------------------------------|-----------|

Images



Immunocytochemistry/ Immunofluorescence - Anti-C3orf18 antibody (ab236674)

HepG2 (human liver hepatocellular carcinoma cell line) cells labeling C3orf18 (green) using ab236674 at 1/100 dilution in ICC/IF, followed by Alexa Fluor 488[®] conjugated Goat Anti-Rabbit IgG (H+L).



Western blot - Anti-C3orf18 antibody (ab236674)

All lanes : Anti-C3orf18 antibody (ab236674) at 1/500 dilution

Lane 1 : Mouse kidney tissue lysate

Lane 2 : Mouse spleen tissue lysate

Lane 3 : Mouse lung tissue lysate

Secondary

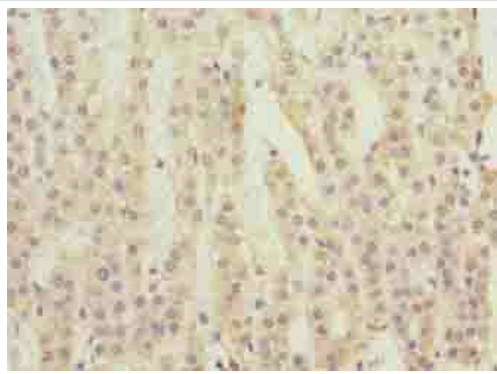
All lanes : Goat polyclonal to Rabbit IgG at 1/50000 dilution

Predicted band size: 17 kDa



Immunohistochemistry (Formalin/PFA-fixed paraffin-embedded sections) - Anti-C3orf18 antibody (ab236674)

Paraffin-embedded human brain tissue stained for C3orf18 using ab236674 at 1/100 dilution in immunohistochemical analysis.



Paraffin-embedded human adrenal gland tissue stained for C3orf18 using ab236674 at 1/100 dilution in immunohistochemical analysis.

Immunohistochemistry (Formalin/PFA-fixed paraffin-embedded sections) - Anti-C3orf18 antibody (ab236674)

Please note: All products are "FOR RESEARCH USE ONLY. NOT FOR USE IN DIAGNOSTIC PROCEDURES"

Our Abpromise to you: Quality guaranteed and expert technical support

- Replacement or refund for products not performing as stated on the datasheet
- Valid for 12 months from date of delivery
- Response to your inquiry within 24 hours
- We provide support in Chinese, English, French, German, Japanese and Spanish
- Extensive multi-media technical resources to help you
- We investigate all quality concerns to ensure our products perform to the highest standards

If the product does not perform as described on this datasheet, we will offer a refund or replacement. For full details of the Abpromise, please visit <https://www.abcam.com/abpromise> or contact our technical team.

Terms and conditions

- Guarantee only valid for products bought direct from Abcam or one of our authorized distributors