

Product datasheet

Anti-C4b antibody [EPR11203] ab168358

Recombinant RabMAb

[1 References](#) [2 Images](#)

Overview

Product name	Anti-C4b antibody [EPR11203]
Description	Rabbit monoclonal [EPR11203] to C4b
Host species	Rabbit
Tested applications	Suitable for: WB, Flow Cyt Unsuitable for: ICC, IHC-P or IP
Species reactivity	Reacts with: Human
Immunogen	Recombinant fragment corresponding to Human C4b.
Positive control	Human serum, Human fetal liver and HepG2 lysates; HepG2 cells.
General notes	<p>Mouse, Rat: We have preliminary internal testing data to indicate this antibody may not react with these species. Please contact us for more information.</p> <p>This product is a recombinant monoclonal antibody, which offers several advantages including:</p> <ul style="list-style-type: none"> - High batch-to-batch consistency and reproducibility - Improved sensitivity and specificity - Long-term security of supply - Animal-free production <p>For more information see here.</p> <p>Our RabMAb[®] technology is a patented hybridoma-based technology for making rabbit monoclonal antibodies. For details on our patents, please refer to RabMAb[®] patents.</p>

Properties

Form	Liquid
Storage instructions	Shipped at 4°C. Store at +4°C short term (1-2 weeks). Upon delivery aliquot. Store at -20°C long term.
Storage buffer	Preservative: 0.01% Sodium azide Constituents: 9% PBS, 40% Glycerol, 0.05% BSA, 50% Tissue culture supernatant
Purity	Tissue culture supernatant
Clonality	Monoclonal
Clone number	EPR11203

Isotype

IgG

Applications

Our [Abpromise guarantee](#) covers the use of **ab168358** in the following tested applications.

The application notes include recommended starting dilutions; optimal dilutions/concentrations should be determined by the end user.

Application	Abreviews	Notes
WB		1/1000 - 1/10000. Predicted molecular weight: 193 kDa.
Flow Cyt		1/10 - 1/100. ab172730 - Rabbit monoclonal IgG, is suitable for use as an isotype control with this antibody.

Application notes

Is unsuitable for ICC,IHC-P or IP.

Target

Function

C4 plays a central role in the activation of the classical pathway of the complement system. It is processed by activated C1 which removes from the alpha chain the C4a anaphylatoxin. The remaining alpha chain fragment C4b is the major activation product and is an essential subunit of the C3 convertase (C4b2a) and the C5 convertase (C3bC4b2a) enzymes of the classical complement pathway.

Derived from proteolytic degradation of complement C4, C4a anaphylatoxin is a mediator of local inflammatory process. It induces the contraction of smooth muscle, increases vascular permeability and causes histamine release from mast cells and basophilic leukocytes.

Sequence similarities

Contains 1 anaphylatoxin-like domain.
Contains 1 NTR domain.

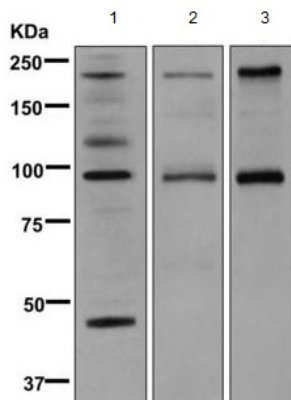
Post-translational modifications

Prior to secretion, the single-chain precursor is enzymatically cleaved to yield the non-identical chains (alpha, beta and gamma). During activation, the alpha chain is cleaved by C1 into C4a and C4b, and C4b stays linked to the beta and gamma chains. Further degradation of C4b by C1 into the inactive fragments C4c and C4d blocks the generation of C3 convertase.

Cellular localization

Secreted.

Images



Western blot - Anti-C4b antibody [EPR11203]
(ab168358)

All lanes : Anti-C4b antibody [EPR11203] (ab168358) at 1/1000 dilution

Lane 1 : Human serum lysate

Lane 2 : Human fetal liver lysate

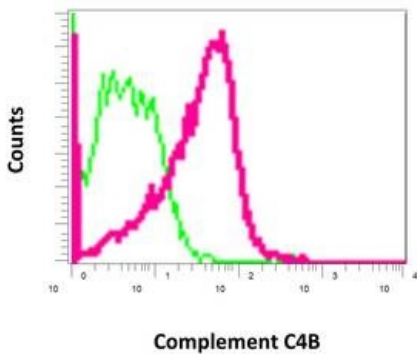
Lane 3 : HepG2 cell lysate

Lysates/proteins at 10 µg per lane.

Secondary

All lanes : HRP labeled goat anti-rabbit at 1/2000 dilution

Predicted band size: 193 kDa



Flow Cytometry - Anti-C4b antibody [EPR11203]
(ab168358)

Flow cytometric analysis of permeabilized HepG2 cells labeling C4b with ab168358 at 1/10 dilution (red) compared to a rabbit IgG negative control (green).

Please note: All products are "FOR RESEARCH USE ONLY. NOT FOR USE IN DIAGNOSTIC PROCEDURES"

Our Promise to you: Quality guaranteed and expert technical support

- Replacement or refund for products not performing as stated on the datasheet
- Valid for 12 months from date of delivery

- Response to your inquiry within 24 hours
- We provide support in Chinese, English, French, German, Japanese and Spanish
- Extensive multi-media technical resources to help you
- We investigate all quality concerns to ensure our products perform to the highest standards

If the product does not perform as described on this datasheet, we will offer a refund or replacement. For full details of the Abpromise, please visit <https://www.abcam.com/abpromise> or contact our technical team.

Terms and conditions

- Guarantee only valid for products bought direct from Abcam or one of our authorized distributors