


Product datasheet

Anti-C6orf134/TAT antibody ab58742

★☆☆☆☆ 2 Abreviews 10 References 2 Images

Overview

<b>Product name</b>	Anti-C6orf134/TAT antibody
<b>Description</b>	Rabbit polyclonal to C6orf134/TAT
<b>Host species</b>	Rabbit
<b>Tested applications</b>	<b>Suitable for:</b> WB
<b>Species reactivity</b>	<b>Reacts with:</b> Human <b>Predicted to work with:</b> Mouse, Rat, Rabbit, Horse, Guinea pig, Cow, Dog 
<b>Immunogen</b>	Synthetic peptide corresponding to Human C6orf134/TAT aa 1-50 (N terminal). Sequence: MEFPFDVDALFPERITVLDQHLRPPARRPGTTTPARVDLQ QQIMTIIDEL  <a href="#">Run BLAST with</a> <a href="#">Run BLAST with</a>
<b>Positive control</b>	WB: HepG2 cell lysate; Human ovary tumor lysate.
<b>General notes</b>	This product was previously labelled as C6orf134

Properties

<b>Form</b>	Liquid
<b>Storage instructions</b>	Shipped at 4°C. Store at +4°C short term (1-2 weeks). Upon delivery aliquot. Store at -20°C long term. Avoid freeze / thaw cycle.
<b>Storage buffer</b>	pH: 7.2 Preservative: 0.09% Sodium azide Constituents: 2% Sucrose, PBS
<b>Purity</b>	Protein A purified
<b>Clonality</b>	Polyclonal
<b>Isotype</b>	IgG

Applications

Our [Abpromise guarantee](#) covers the use of **ab58742** in the following tested applications.

The application notes include recommended starting dilutions; optimal dilutions/concentrations should be determined by the end user.

Application	Abreviews	Notes
-------------	-----------	-------

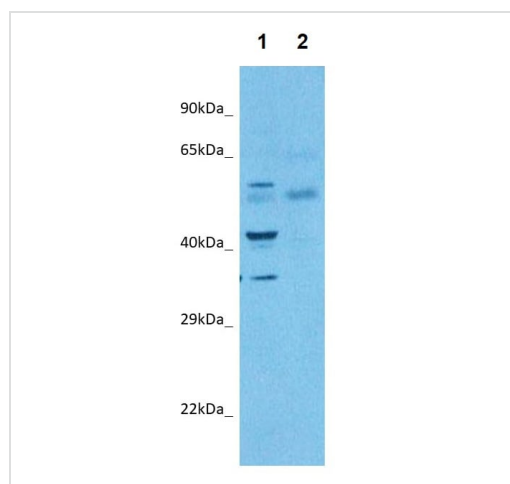
WB	★☆☆☆☆	Use a concentration of 2.5 - 3 µg/ml. Detects a band of approximately 36 kDa (predicted molecular weight: 36 kDa). Good results were obtained when blocked with 5% non-fat dry milk in 0.05% PBS-T.
----	-------	--

## Target

**Function** Specifically acetylates 'Lys-40' in alpha-tubulin on the luminal side of microtubules. May affect microtubule stability and regulate microtubule dynamics. May be involved in neuron development.

**Sequence similarities** Belongs to the acetyltransferase ATAT1 family.

## Images



Western blot - Anti-C6orf134/TAT antibody (ab58742)

**All lanes :** Anti-C6orf134/TAT antibody (ab58742) at 3 µg/ml

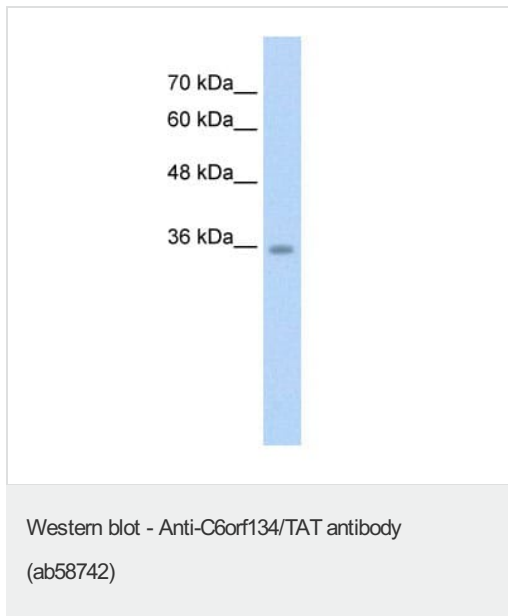
**Lane 1 :** Human ovary tumor lysate

**Lane 2 :** Human lung tumor lysate

Lysates/proteins at 25 µg per lane.

**Predicted band size:** 36 kDa

Western blot analysis labeling C6orf134/TAT with ab58742.



Anti-C6orf134/TAT antibody (ab58742) at 2.5 µg/ml + HepG2 cell lysate at 10 µg

**Secondary**

HRP conjugated anti-Rabbit IgG at 1/50000 dilution

**Predicted band size:** 36 kDa

**Observed band size:** 36 kDa

Gel concentration: 12%

**Please note:** All products are "FOR RESEARCH USE ONLY. NOT FOR USE IN DIAGNOSTIC PROCEDURES"

**Our Abpromise to you: Quality guaranteed and expert technical support**

---

- Replacement or refund for products not performing as stated on the datasheet
- Valid for 12 months from date of delivery
- Response to your inquiry within 24 hours
  
- We provide support in Chinese, English, French, German, Japanese and Spanish
- Extensive multi-media technical resources to help you
- We investigate all quality concerns to ensure our products perform to the highest standards

If the product does not perform as described on this datasheet, we will offer a refund or replacement. For full details of the Abpromise, please visit <https://www.abcam.com/abpromise> or contact our technical team.

**Terms and conditions**

---

- Guarantee only valid for products bought direct from Abcam or one of our authorized distributors