

Product datasheet

Anti-CAB3 antibody ab16717

★★★★★ 1 Abreviews 1 References 1 Image

Overview

|                            |  |
|----------------------------|--|
| <b>Product name</b>        | Anti-CAB3 antibody   |
| <b>Description</b>         | Rabbit polyclonal to CAB3  |
| <b>Host species</b>        | Rabbit   |
| <b>Specificity</b>         | This antibody recognises the beta 3 calcium channel subunit.   |
| <b>Tested applications</b> | <b>Suitable for:</b> WB, IP, ICC/IF  |
| <b>Species reactivity</b>  | <b>Reacts with:</b> Rat  |
| <b>Immunogen</b>           | Synthetic peptide corresponding to CAB3 aa 1-15 conjugated to keyhole limpet haemocyanin.<br>Sequence:<br>MYDDSYVPGFEDSEA<br><br><a href="#">Run BLAST with</a> <a href="#">Run BLAST with</a> |
| <b>Positive control</b>    | Rat cortical and hippocampal, neuronal membranes. Negative control: non neuronal cells   |
| <b>General notes</b>       | Protein previously labeled as CACNB3.  |

Properties

|                             |  |
|-----------------------------|--|
| <b>Form</b>                 | Liquid   |
| <b>Storage instructions</b> | Shipped at 4°C. Store at +4°C short term (1-2 weeks). Upon delivery aliquot. Store at -20°C or -80°C. Avoid freeze / thaw cycle. |
| <b>Storage buffer</b>       | Preservative: 0.08% Sodium Azide<br>Constituents: PBS, pH 7.4  |
| <b>Purity</b>               | Ammonium Sulphate Precipitation  |
| <b>Clonality</b>            | Polyclonal   |
| <b>Isotype</b>              | IgG  |

Applications

Our [Abpromise guarantee](#) covers the use of **ab16717** in the following tested applications.

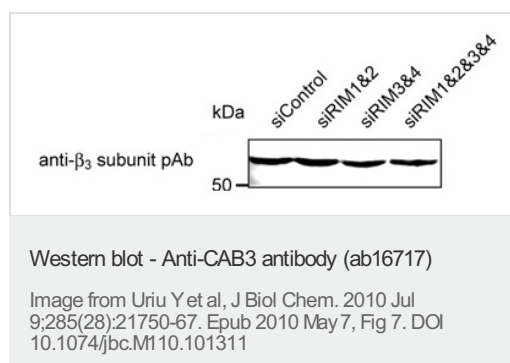
The application notes include recommended starting dilutions; optimal dilutions/concentrations should be determined by the end user.

| Application | Abreviews | Notes                                       |
|-------------|-----------|---|
| WB          | ★★★★☆     | 1/1000. Predicted molecular weight: 58 kDa. |
| IP          |           | Use at an assay dependent dilution.         |
| ICC/IF      |           | Use at an assay dependent dilution.         |

## Target

|                              |   |
|------------------------------|---|
| <b>Function</b>              | The beta subunit of voltage-dependent calcium channels contributes to the function of the calcium channel by increasing peak calcium current, shifting the voltage dependencies of activation and inactivation, modulating G protein inhibition and controlling the alpha-1 subunit membrane targeting. |
| <b>Tissue specificity</b>    | Expressed mostly in brain, smooth muscle and ovary.   |
| <b>Sequence similarities</b> | Belongs to the calcium channel beta subunit family.<br>Contains 1 SH3 domain.   |

## Images



PC12 cells transfected with siRNAs were solubilized and analyzed by WB using ab16717.

**Please note:** All products are "FOR RESEARCH USE ONLY AND ARE NOT INTENDED FOR DIAGNOSTIC OR THERAPEUTIC USE"

## Our Abpromise to you: Quality guaranteed and expert technical support

- Replacement or refund for products not performing as stated on the datasheet
- Valid for 12 months from date of delivery
- Response to your inquiry within 24 hours
- We provide support in Chinese, English, French, German, Japanese and Spanish
- Extensive multi-media technical resources to help you
- We investigate all quality concerns to ensure our products perform to the highest standards

If the product does not perform as described on this datasheet, we will offer a refund or replacement. For full details of the Abpromise, please visit <https://www.abcam.com/abpromise> or contact our technical team.

## Terms and conditions

---

- Guarantee only valid for products bought direct from Abcam or one of our authorized distributors