




Product datasheet

Anti-CACNB1/CAB1 antibody ab230033

3 Images

Overview

<b>Product name</b>	Anti-CACNB1/CAB1 antibody
<b>Description</b>	Rabbit polyclonal to CACNB1/CAB1
<b>Host species</b>	Rabbit
<b>Tested applications</b>	<b>Suitable for:</b> WB, IHC-P
<b>Species reactivity</b>	<b>Reacts with:</b> Human <b>Predicted to work with:</b> Mouse, Rat, Cow 
<b>Immunogen</b>	Recombinant fragment corresponding to Human CACNB1/CAB1 aa 429-598. Sequence: ATAALAASPAPVSNLQGPYLASGDQPLERATGEHAS MHEYPGELGQPPGL YPSSHPPGRAGTLRALSRQDTFDADTPGSRNSAYTEL GDSCVDMETDPSE GPGLGDPAGGGTPPARQGSWEDEEEDYEEELTDNR NRGRNKARYCAEGGG PVLGRNKNELEGWGRGVYIR  Database link: <a href="#">Q02641-1</a>   <a href="#">Run BLAST with</a>  <a href="#">Run BLAST with</a>
<b>Positive control</b>	WB: HepG2 whole cell lysate. IHC-P: Human brain and kidney tissues.
<b>General notes</b>	Previously labelled as CACNB1.

Properties

<b>Form</b>	Liquid
<b>Storage instructions</b>	Shipped at 4°C. Store at +4°C short term (1-2 weeks). Upon delivery aliquot. Store at -20°C long term. Avoid freeze / thaw cycle.
<b>Storage buffer</b>	pH: 7.3 Preservative: 0.02% Sodium azide Constituents: PBS, 50% Glycerol
<b>Purity</b>	Immunogen affinity purified
<b>Clonality</b>	Polyclonal
<b>Isotype</b>	IgG

## Applications

Our [Abpromise guarantee](#) covers the use of **ab230033** in the following tested applications.

The application notes include recommended starting dilutions; optimal dilutions/concentrations should be determined by the end user.

Application	Abreviews	Notes
WB		1/1000 - 1/5000. Predicted molecular weight: 66 kDa.
IHC-P		1/20 - 1/200.

## Target

### Function

The beta subunit of voltage-dependent calcium channels contributes to the function of the calcium channel by increasing peak calcium current, shifting the voltage dependencies of activation and inactivation, modulating G protein inhibition and controlling the alpha-1 subunit membrane targeting.

### Tissue specificity

Isoform 1 and isoform 3 are expressed in brain, heart, spleen, central nervous system and neuroblastoma cells. Isoform 2 is expressed in skeletal muscle.

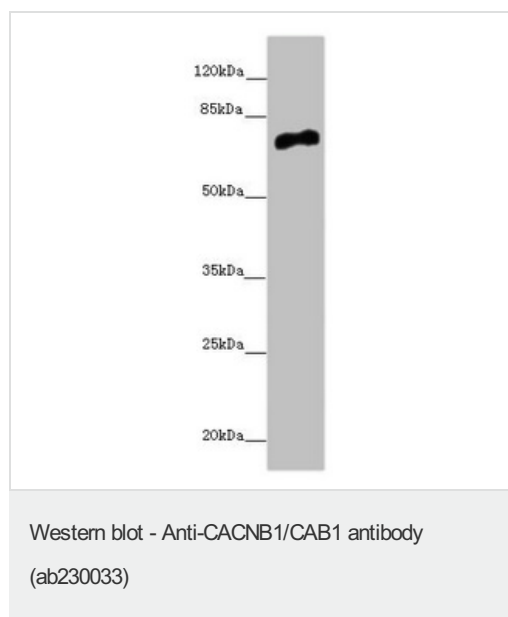
### Sequence similarities

Belongs to the calcium channel beta subunit family.  
Contains 1 SH3 domain.

### Cellular localization

Cell membrane > sarcolemma.

## Images



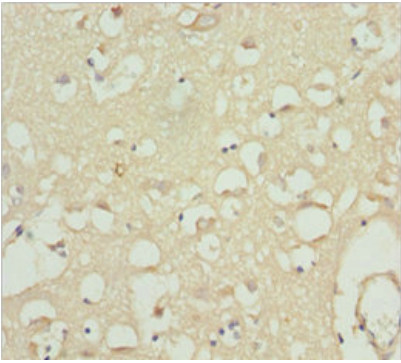
Anti-CACNB1/CAB1 antibody (ab230033) at 1/1000 dilution + HepG2 (human liver hepatocellular carcinoma cell line) whole cell lysate

### Secondary

Goat polyclonal to rabbit IgG at 1/10000 dilution

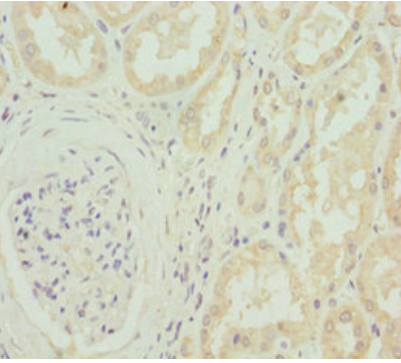
**Predicted band size:** 66 kDa

**Observed band size:** 66 kDa



Paraffin-embedded human brain tissue stained for CACNB1/CAB1 using ab230033 at 1/100 dilution in immunohistochemical analysis.

Immunohistochemistry (Formalin/PFA-fixed paraffin-embedded sections) - Anti-CACNB1/CAB1 antibody (ab230033)



Paraffin-embedded human kidney tissue stained for CACNB1/CAB1 using ab230033 at 1/100 dilution in immunohistochemical analysis.

Immunohistochemistry (Formalin/PFA-fixed paraffin-embedded sections) - Anti-CACNB1/CAB1 antibody (ab230033)

**Please note:** All products are "FOR RESEARCH USE ONLY. NOT FOR USE IN DIAGNOSTIC PROCEDURES"

### **Our Abpromise to you: Quality guaranteed and expert technical support**

---

- Replacement or refund for products not performing as stated on the datasheet
- Valid for 12 months from date of delivery
- Response to your inquiry within 24 hours
- We provide support in Chinese, English, French, German, Japanese and Spanish
- Extensive multi-media technical resources to help you
- We investigate all quality concerns to ensure our products perform to the highest standards

If the product does not perform as described on this datasheet, we will offer a refund or replacement. For full details of the Abpromise, please visit <https://www.abcam.com/abpromise> or contact our technical team.

## Terms and conditions

---

- Guarantee only valid for products bought direct from Abcam or one of our authorized distributors