


Product datasheet

Anti-Cadherin 16 antibody [CDH16/1071] ab215769

2 Images

Overview

Product name	Anti-Cadherin 16 antibody [CDH16/1071]
Description	Mouse monoclonal [CDH16/1071] to Cadherin 16
Host species	Mouse
Tested applications	Suitable for: IHC-P
Species reactivity	Reacts with: Rat, Human Predicted to work with: Mouse, Rabbit, Dog 
Immunogen	Recombinant full length protein corresponding to Human Cadherin 16 aa 1-829. Sequence:

MVPAWLWLLC VSVPAALPKA QPAELSVEVP
 ENYGGNFPLY LTKLPLPREG AEGQMLSGD
 SGKATEGPFA MDPDSGFLV TRALDREEQA
 EYQLQVTLEM QDGHVLWGPQ PVLVHVVDEN
 DQVPHFSQAI YRARLSRGR PGIPFLFLEA
 SDRDEPGTAN SDRRFHLSQ APAQSPDMF
 QLEPRLGALA LSPKGSTSLD HALERTYQLL
 VQVKDMGDQA SGHQATATVE VSIIESTWVS
 LEPIHLAENL KVLYPHMAQ VHWSSGGDVHY
 HLESHPPGPF EVNAEGLYV TRELDREAQA
 EYLLQVRAQN SHGEDYAAPL ELHVLMDEN
 DNVPIPPRD PTVSIPELSP PGTEVTRLSA
 EDADAPGSPN SHVYQQLSP EPEDGVEGRA
 FQVDPTSGSV TLGVLPLRAG QNILLVLAM
 DLAGAEGGFS STCEVEVAVT DINDHAPEFI TSQIGPISLP
 EDVEPGTLVA MLTAIDADLE PAFRLMDFAI
 ERGDTEGTFG LDWEPDSGHV RRLCKNLSY
 EAAPSHEVVV VVQSVAKLVG PGPFGATAT
 VTVLVERVMP PPKLDQESYE ASVPISAPAG
 SFLTIQPSD PISRTLRFSL VNDSEGWLCI EKFSGEVHTA
 QSLQGAQPGD TYTVLVEAQD TDEPRLSASA
 PLVIHFLKAP PAPALTLAPV PSQYLCTPRQ DHGLVSGPS
 KDPDLASGHG PYSFTLGPNP TVQRDWRLQT
 LNGSHAYLTL ALHWVEPREH IIPVVVSHNA QMWQLLVRVI
 VCRCNVEGQC MRKVGRMKGM PTKLSAVGIL
 VGTLVAGIF LILIFTHWTM SRKKDPDQPA DSVPLKATV

Database link: [O75309](#)

 [Run BLAST with](#)

 [Run BLAST with](#)

Positive control

Human renal cell carcinoma and rat kidney tissues

General notes

Reproducibility is key to advancing scientific discovery and accelerating scientists' next breakthrough.

Abcam is leading the way with our range of recombinant antibodies, knockout-validated antibodies and knockout cell lines, all of which support improved reproducibility.

We are also planning to innovate the way in which we present recommended applications and species on our product datasheets, so that only applications & species that have been tested in our own labs, our suppliers or by selected trusted collaborators are covered by our Abpromise™ guarantee.

In preparation for this, we have started to update the applications & species that this product is Abpromise guaranteed for.

We are also updating the applications & species that this product has been “predicted to work with,” however this information is not covered by our Abpromise guarantee.

Applications & species from publications and Abreviews that have not been tested in our own labs or in those of our suppliers are not covered by the Abpromise guarantee.

Please check that this product meets your needs before purchasing. If you have any questions, special requirements or concerns, please send us an inquiry and/or contact our Support team ahead of purchase. Recommended alternatives for this product can be found below, as well as customer reviews and Q&As.

Properties

Form	Liquid
Storage instructions	Shipped at 4°C. Store at +4°C short term (1-2 weeks). Upon delivery aliquot. Store at -20°C long term. Avoid freeze / thaw cycle.
Storage buffer	Preservative: 0.05% Sodium azide Constituents: 99% PBS, 0.05% BSA
Purity	Protein A/G purified
Clonality	Monoclonal
Clone number	CDH16/1071
Isotype	IgG1
Light chain type	kappa

Applications

Our [Abpromise guarantee](#) covers the use of **ab215769** in the following tested applications.

The application notes include recommended starting dilutions; optimal dilutions/concentrations should be determined by the end user.

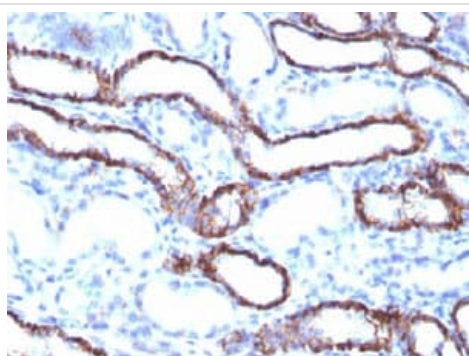
Application	Abreviews	Notes
-------------	-----------	-------

Application	Abreviews	Notes
IHC-P		Use a concentration of 0.5 - 1 µg/ml. Perform heat mediated antigen retrieval with citrate buffer pH 6 before commencing with IHC staining protocol.

Target

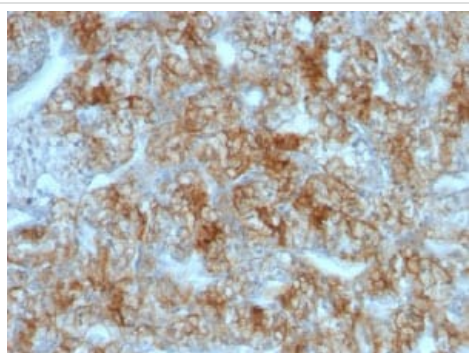
Function	Cadherins are calcium dependent cell adhesion proteins. They preferentially interact with themselves in a homophilic manner in connecting cells; cadherins may thus contribute to the sorting of heterogeneous cell types.
Tissue specificity	Kidney specific.
Sequence similarities	Contains 6 cadherin domains.
Cellular localization	Cell membrane.

Images



Immunohistochemical analysis of paraffin embedded, formalin fixed rat kidney tissue labeling Cadherin 16 using ab215769 at 1 µg/ml dilution.

Immunohistochemistry (Formalin/PFA-fixed paraffin-embedded sections) - Anti-Cadherin 16 antibody [CDH16/1071] (ab215769)



Immunohistochemical analysis of paraffin embedded, formalin fixed human renal cell carcinoma tissue labeling Cadherin 16 using ab215769 at 1 µg/ml dilution.

Immunohistochemistry (Formalin/PFA-fixed paraffin-embedded sections) - Anti-Cadherin 16 antibody [CDH16/1071] (ab215769)

Please note: All products are "FOR RESEARCH USE ONLY. NOT FOR USE IN DIAGNOSTIC PROCEDURES"

Our Abpromise to you: Quality guaranteed and expert technical support

- Replacement or refund for products not performing as stated on the datasheet
- Valid for 12 months from date of delivery
- Response to your inquiry within 24 hours

- We provide support in Chinese, English, French, German, Japanese and Spanish
- Extensive multi-media technical resources to help you
- We investigate all quality concerns to ensure our products perform to the highest standards

If the product does not perform as described on this datasheet, we will offer a refund or replacement. For full details of the Abpromise, please visit <https://www.abcam.com/abpromise> or contact our technical team.

Terms and conditions

- Guarantee only valid for products bought direct from Abcam or one of our authorized distributors