

Product datasheet

Anti-Cadherin 16 antibody [CDH16/1071] - BSA and Azide free ab212243

2 Images

Overview

Product name	Anti-Cadherin 16 antibody [CDH16/1071] - BSA and Azide free
Description	Mouse monoclonal [CDH16/1071] to Cadherin 16 - BSA and Azide free
Host species	Mouse
Tested applications	Suitable for: IHC-P, ICC/IF, Flow Cyt
Species reactivity	Reacts with: Mouse, Rat, Rabbit, Dog, Human
Immunogen	Recombinant full length protein within Human Cadherin 16. The exact sequence is proprietary. Database link: O75309
Positive control	Human renal cell carcinoma and rat kidney tissues.

Properties

Form	Liquid
Storage instructions	Shipped at 4°C. Store at +4°C short term (1-2 weeks). Upon delivery aliquot. Store at -20°C long term. Avoid freeze / thaw cycle.
Storage buffer	Constituent: 100% PBS
Purity	Protein A/G purified
Clonality	Monoclonal
Clone number	CDH16/1071
Isotype	IgG1
Light chain type	kappa

Applications

Our [Abpromise guarantee](#) covers the use of **ab212243** in the following tested applications.

The application notes include recommended starting dilutions; optimal dilutions/concentrations should be determined by the end user.

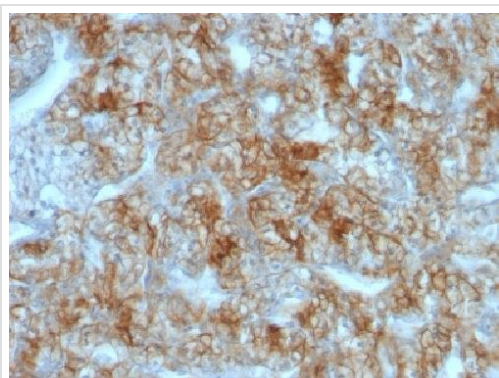
Application	Abreviews	Notes
-------------	-----------	-------

Application	Abreviews	Notes
IHC-P		Use a concentration of 0.5 - 1 µg/ml. Perform heat mediated antigen retrieval with Tris/EDTA buffer pH 9.0 before commencing with IHC staining protocol.
ICC/IF		Use a concentration of 1 - 2 µg/ml.
Flow Cyt		Use 0.5-1µg for 10 ⁶ cells.

Target

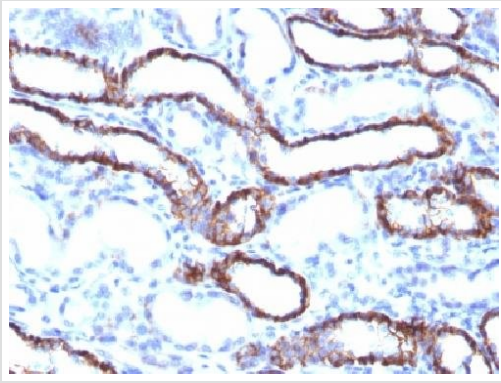
Function	Cadherins are calcium dependent cell adhesion proteins. They preferentially interact with themselves in a homophilic manner in connecting cells; cadherins may thus contribute to the sorting of heterogeneous cell types.
Tissue specificity	Kidney specific.
Sequence similarities	Contains 6 cadherin domains.
Cellular localization	Cell membrane.

Images



Immunohistochemical analysis of formalin-fixed paraffin-embedded Human renal cell carcinoma tissue, labeling Cadherin 16 using ab212243 at 1 µg/mL.

Immunohistochemistry (Formalin/PFA-fixed paraffin-embedded sections) - Anti-Cadherin 16 antibody [CDH16/1071] - BSA and Azide free (ab212243)



Immunohistochemical analysis of formalin-fixed paraffin-embedded rat kidney tissue, labeling Cadherin 16 using ab212243 at 1 µg/mL.

Immunohistochemistry (Formalin/PFA-fixed paraffin-embedded sections) - Anti-Cadherin 16 antibody [CDH16/1071] - BSA and Azide free (ab212243)

Please note: All products are "FOR RESEARCH USE ONLY. NOT FOR USE IN DIAGNOSTIC PROCEDURES"

Our Abpromise to you: Quality guaranteed and expert technical support

- Replacement or refund for products not performing as stated on the datasheet
- Valid for 12 months from date of delivery
- Response to your inquiry within 24 hours

- We provide support in Chinese, English, French, German, Japanese and Spanish
- Extensive multi-media technical resources to help you
- We investigate all quality concerns to ensure our products perform to the highest standards

If the product does not perform as described on this datasheet, we will offer a refund or replacement. For full details of the Abpromise, please visit <https://www.abcam.com/abpromise> or contact our technical team.

Terms and conditions

- Guarantee only valid for products bought direct from Abcam or one of our authorized distributors