


Product datasheet

Anti-Cadherin 16 antibody [rCDH16/1071] ab234411

Recombinant

1 Image

Overview

Product name	Anti-Cadherin 16 antibody [rCDH16/1071]
Description	Mouse monoclonal [rCDH16/1071] to Cadherin 16
Host species	Mouse
Tested applications	Suitable for: IHC-P
Species reactivity	Reacts with: Human Predicted to work with: Mouse, Rat, Rabbit, Dog 
Immunogen	Recombinant full length protein corresponding to Human Cadherin 16 aa 1-829. Sequence: MVPAWLWLLC VSVPQALPKA QPAELSVEVP ENYGGNFPLY LTKLPLPREG AEGQIVLSGD SGKATEGPFA MDPDSGFLLV TRALDREEQA EYQLQVTLEM QDGHVLWGPQ PVLVHVKDEN DQVPHFSQAI YRARLSRGTR PGIPFLFLEA SDRDEPGTAN SDLRFHILSQ APAQPSPDMF QLEPRLGALA LSPKGSTSLD HALERTYQLL VQVKDMGDQA SGHQATATVE VSIIESTWVS LEPIHLAENL KVLYPHHMAQ VHWSSGGDVHY HLESHPPGPF EVNAEGNLYV TRELDREAQA EYLLQVRAQN SHGEDYAAPL ELHVLVMDEN DNVPICPPRD PTVSIPELSP PGTEVTRLSA EDADAPGSPN SHVVYQLLSP EPEDGVEGRA FQVDPTSGSV TLGVLPLRAG QNILLVLAM DLAGAEGGFS STCEVEVAVT DINDHAPEFI TSQIGPISLP EDVEPGTLVA MLTAIDADLE PAFRLMDFAI ERGDTEGTFG LDWEPDSGHV RLRLCKNLSY EAAPSHEVVV VVQSVAKLVG PGPGGATAT VTVLVERVMP PPKLDQESYE ASVPISAPAG SFLLTIQPSD PISRTLRFSL VNDSEGWLCI EKFSGEVHTA QSLQGAQPGD TYTVLVEAQD TDEPRLSASA PLVIHFLKAP PAPALTLAPV PSQYLCTPRQ DHGLVSGPS KDPDLASGHG PYSFTLGPNP TVQRDWRLQT LNGSHAYLTL ALHWVEPREH IIPVVVSHNA

QMWQLLVRVIVCRCNVEGQC MRKVGRMKGM
PTKLSAVGIL VGTLVAIGIF LILIFTHWTM
SRKKDPDQPA DSVPLKATV

Database link: [O75309](#)

 [Run BLAST with](#)

 [Run BLAST with](#)

Positive control Human Renal Cell Carcinoma tissue.

Properties

Form	Liquid
Storage instructions	Shipped at 4°C. Store at +4°C short term (1-2 weeks). Upon delivery aliquot. Store at -20°C long term. Avoid freeze / thaw cycle.
Storage buffer	Preservative: 0.05% Sodium azide Constituents: PBS, 0.05% BSA
Purity	Protein A/G purified
Clonality	Monoclonal
Clone number	rCDH16/1071
Isotype	IgG1
Light chain type	kappa

Applications

Our [Abpromise guarantee](#) covers the use of **ab234411** in the following tested applications.

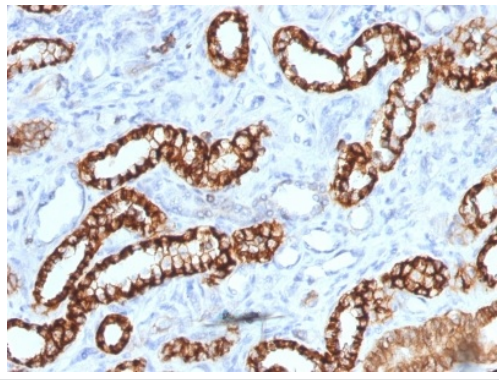
The application notes include recommended starting dilutions; optimal dilutions/concentrations should be determined by the end user.

Application	Abreviews	Notes
IHC-P		Use a concentration of 0.5 - 1 µg/ml. Perform heat mediated antigen retrieval with Tris/EDTA buffer pH 9.0 before commencing with IHC staining protocol. Primary incubation for 30 minutes at room temperature.

Target

Function	Cadherins are calcium dependent cell adhesion proteins. They preferentially interact with themselves in a homophilic manner in connecting cells; cadherins may thus contribute to the sorting of heterogeneous cell types.
Tissue specificity	Kidney specific.
Sequence similarities	Contains 6 cadherin domains.
Cellular localization	Cell membrane.

Images



Formalin-fixed, paraffin-embedded human renal cell carcinoma tissue stained for Cadherin 16 using ab234411 at 1 µg/ml in immunohistochemical analysis.

Immunohistochemistry (Formalin/PFA-fixed paraffin-embedded sections) - Anti-Cadherin 16 antibody [rCDH16/1071] (ab234411)

Please note: All products are "FOR RESEARCH USE ONLY. NOT FOR USE IN DIAGNOSTIC PROCEDURES"

Our Abpromise to you: Quality guaranteed and expert technical support

- Replacement or refund for products not performing as stated on the datasheet
- Valid for 12 months from date of delivery
- Response to your inquiry within 24 hours
- We provide support in Chinese, English, French, German, Japanese and Spanish
- Extensive multi-media technical resources to help you
- We investigate all quality concerns to ensure our products perform to the highest standards

If the product does not perform as described on this datasheet, we will offer a refund or replacement. For full details of the Abpromise, please visit <https://www.abcam.com/abpromise> or contact our technical team.

Terms and conditions

- Guarantee only valid for products bought direct from Abcam or one of our authorized distributors