


Product datasheet

Anti-Calcineurin A antibody ab71149

★★★★★ 1 Abreviews 5 References 3 Images

Overview

Product name	Anti-Calcineurin A antibody
Description	Rabbit polyclonal to Calcineurin A
Host species	Rabbit
Tested applications	Suitable for: WB, IP, IHC-P
Species reactivity	Reacts with: Mouse, Human Predicted to work with: Rat, Horse, Chicken, Cow, Dog, Turkey, Pig, Chimpanzee, Rhesus monkey, Gorilla, Orangutan, <i>Xenopus tropicalis</i> 
Immunogen	A synthetic peptide corresponding to a region between residue 470 and the C-terminus (residue 521) of human Calcineurin A (NP_000935.1).
Positive control	Whole cell lysate from hela cells, NIH3T3 cells and 293T cells.
General notes	<p>Reproducibility is key to advancing scientific discovery and accelerating scientists' next breakthrough.</p> <p>Abcam is leading the way with our range of recombinant antibodies, knockout-validated antibodies and knockout cell lines, all of which support improved reproducibility.</p> <p>We are also planning to innovate the way in which we present recommended applications and species on our product datasheets, so that only applications & species that have been tested in our own labs, our suppliers or by selected trusted collaborators are covered by our Abpromise™ guarantee.</p> <p>In preparation for this, we have started to update the applications & species that this product is Abpromise guaranteed for.</p> <p>We are also updating the applications & species that this product has been “predicted to work with,” however this information is not covered by our Abpromise guarantee.</p> <p>Applications & species from publications and Abreviews that have not been tested in our own labs or in those of our suppliers are not covered by the Abpromise guarantee.</p> <p>Please check that this product meets your needs before purchasing. If you have any questions, special requirements or concerns, please send us an inquiry and/or contact our Support team ahead of purchase. Recommended alternatives for this product can be found below, as well as customer reviews and Q&As.</p>

Properties

Form	Liquid
Storage instructions	Shipped at 4°C. Upon delivery aliquot and store at -20°C. Avoid freeze / thaw cycles.
Storage buffer	pH: 7 Preservative: 0.09% Sodium azide Constituents: 1.815% Tris, 1.764% Sodium citrate, 0.021% PBS
Purity	Immunogen affinity purified
Clonality	Polyclonal
Isotype	IgG

Applications

Our [Abpromise guarantee](#) covers the use of **ab71149** in the following tested applications.

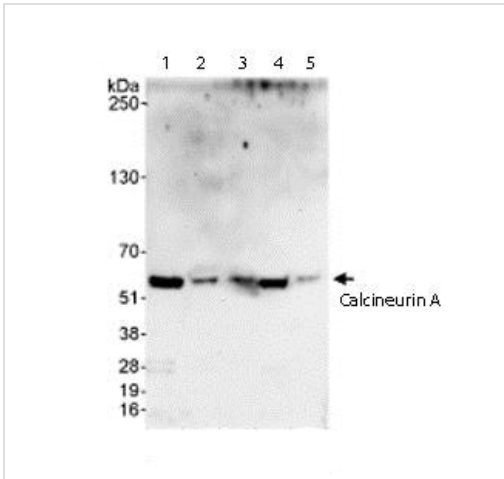
The application notes include recommended starting dilutions; optimal dilutions/concentrations should be determined by the end user.

Application	Abreviews	Notes
WB	★★★★☆	1/2000 - 1/10000. Detects a band of approximately 59 kDa (predicted molecular weight: 59 kDa).
IP		Use at 2-5 µg/mg of lysate.
IHC-P		1/500 - 1/2000. Perform heat mediated antigen retrieval with Tris/EDTA buffer pH 9.0 before commencing with IHC staining protocol.

Target

Function	Calcium-dependent, calmodulin-stimulated protein phosphatase. This subunit may have a role in the calmodulin activation of calcineurin. Dephosphorylates DNM1L, HSPB1 and SSH1.
Sequence similarities	Belongs to the PPP phosphatase family. PP-2B subfamily.
Cellular localization	Nucleus. Colocalizes with ACTN1 and MYOZ2 at the Z line in heart and skeletal muscle.

Images



Western blot - Anti-Calcineurin A antibody (ab71149)

All lanes : Anti-Calcineurin A antibody (ab71149) at 0.1 µg/ml

Lane 1 : Whole cell lysate from HeLa cells at 50 µg

Lane 2 : Whole cell lysate from HeLa cells at 15 µg

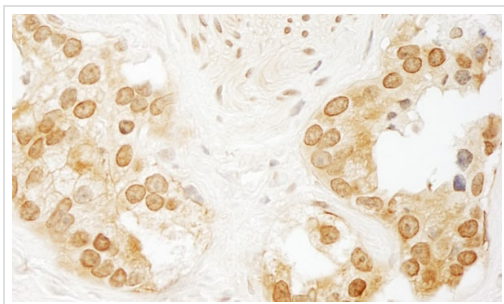
Lane 3 : Whole cell lysate from HeLa cells at 5 µg

Lane 4 : Whole cell lysate from 293T cells at 50 µg

Lane 5 : Whole cell lysate from NIH 3T3 cells at 50 µg

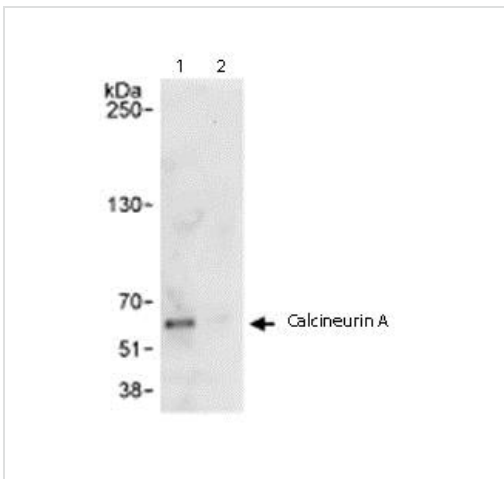
Predicted band size: 59 kDa

Observed band size: 59 kDa



Immunohistochemistry (Formalin/PFA-fixed paraffin-embedded sections) - Anti-Calcineurin A antibody (ab71149)

Immunohistochemistry (Formalin/PFA-fixed paraffin-embedded sections) analysis of human prostate carcinoma tissue labelling Calcineurin A with ab71149 at 1/1000 (1 µg/ml). Detection: DAB.



Immunoprecipitation - Anti-Calcineurin A antibody (ab71149)

Immunoprecipitation/ Western Blot of Calcineurin A

Lane 1: ab71149 at 3 µg/mg whole cell lysate.

Lane 2: Control IgG.

Whole cell lysate from HeLa cells at 1mg for IP, 20% of IP loaded.

Subsequent WB detection was performed with 1 µg/ml ab71149.

Chemiluminescence with an exposure time of 30 seconds.

Please note: All products are "FOR RESEARCH USE ONLY. NOT FOR USE IN DIAGNOSTIC PROCEDURES"

Our Abpromise to you: Quality guaranteed and expert technical support

- Replacement or refund for products not performing as stated on the datasheet
- Valid for 12 months from date of delivery
- Response to your inquiry within 24 hours

- We provide support in Chinese, English, French, German, Japanese and Spanish
- Extensive multi-media technical resources to help you
- We investigate all quality concerns to ensure our products perform to the highest standards

If the product does not perform as described on this datasheet, we will offer a refund or replacement. For full details of the Abpromise, please visit <https://www.abcam.com/abpromise> or contact our technical team.

Terms and conditions

- Guarantee only valid for products bought direct from Abcam or one of our authorized distributors