


## Product datasheet

# Anti-Calmodulin 1/2/3 (phospho T79 + S81) antibody ab61001

[4 References](#) [3 Images](#)

### Overview

<b>Product name</b>	Anti-Calmodulin 1/2/3 (phospho T79 + S81) antibody
<b>Description</b>	Rabbit polyclonal to Calmodulin 1/2/3 (phospho T79 + S81)
<b>Host species</b>	Rabbit
<b>Specificity</b>	Detects endogenous levels of Calmodulin only when phosphorylated at threonine 79 and serine 81.
<b>Tested applications</b>	<b>Suitable for:</b> ICC/IF, ELISA, WB, IHC-P
<b>Species reactivity</b>	<b>Reacts with:</b> Human <b>Predicted to work with:</b> Mouse, Rat 
<b>Immunogen</b>	Synthetic peptide corresponding to Human Calmodulin 1/2/3. The antiserum was produced against synthesized phosphopeptide derived from human Calmodulin around the phosphorylation site of threonine 79 and serine 81 (K-D-T(p)-D-S(p)-E-E) Database link: <a href="#">P0DP23</a>
<b>Positive control</b>	IHC-P: human brain tissue. WB: extracts from Jurkat cells.
<b>General notes</b>	<p>Reproducibility is key to advancing scientific discovery and accelerating scientists' next breakthrough.</p> <p>Abcam is leading the way with our range of recombinant antibodies, knockout-validated antibodies and knockout cell lines, all of which support improved reproducibility.</p> <p>We are also planning to innovate the way in which we present recommended applications and species on our product datasheets, so that only applications &amp; species that have been tested in our own labs, our suppliers or by selected trusted collaborators are covered by our Abpromise™ guarantee.</p> <p>In preparation for this, we have started to update the applications &amp; species that this product is Abpromise guaranteed for.</p> <p>We are also updating the applications &amp; species that this product has been “predicted to work with,” however this information is not covered by our Abpromise guarantee.</p> <p>Applications &amp; species from publications and Abreviews that have not been tested in our own labs or in those of our suppliers are not covered by the Abpromise guarantee.</p> <p>Please check that this product meets your needs before purchasing. If you have any questions, special requirements or concerns, please send us an inquiry and/or contact our Support team ahead of purchase. Recommended alternatives for this product can be found below, as well as</p>

customer reviews and Q&As.

## Properties

---

<b>Form</b>	Liquid
<b>Storage instructions</b>	Shipped at 4°C. Store at +4°C short term (1-2 weeks). Upon delivery aliquot. Store at -20°C long term. Avoid freeze / thaw cycle.
<b>Storage buffer</b>	pH: 7.40 Preservative: 0.02% Sodium azide Constituents: PBS, 50% Glycerol (glycerin, glycerine), 0.87% Sodium chloride  Without Mg <sup>2+</sup> and Ca <sup>2+</sup>
<b>Purity</b>	Immunogen affinity purified
<b>Purification notes</b>	Affinity purified from rabbit antiserum by affinity-chromatography using epitope-specific phosphopeptide. The antibody against non-phosphopeptide was removed by chromatography using non-phosphopeptide corresponding to the phosphorylation site.
<b>Clonality</b>	Polyclonal
<b>Isotype</b>	IgG

## Applications

---

Our [Abpromise guarantee](#) covers the use of **ab61001** in the following tested applications.

The application notes include recommended starting dilutions; optimal dilutions/concentrations should be determined by the end user.

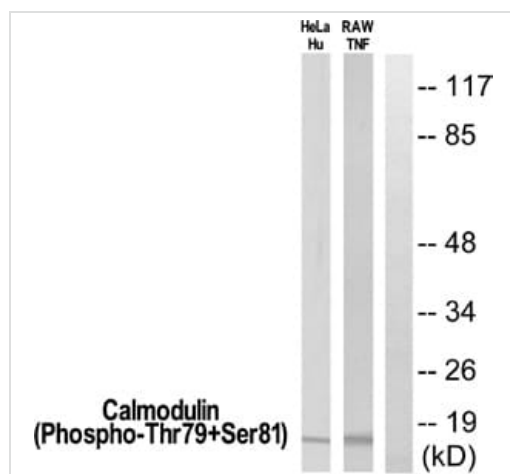
Application	Abreviews	Notes
ICC/IF		1/100 - 1/500.
ELISA		1/5000.
WB		1/500 - 1/1000. Detects a band of approximately 17 kDa (predicted molecular weight: 17 kDa).
IHC-P		1/50 - 1/100.

## Target

---

<b>Relevance</b>	Function: Calmodulin mediates the control of a large number of enzymes and other proteins by Ca <sup>2+</sup> . Among the enzymes to be stimulated by the calmodulin-Ca <sup>2+</sup> complex are a number of protein kinases and phosphatases. Together with CEP110 and centrin, is involved in a genetic pathway that regulates the centrosome cycle and progression through cytokinesis.
<b>Cellular localization</b>	Cytoplasm > cytoskeleton > spindle. Cytoplasm > cytoskeleton > spindle pole. Distributed throughout the cell during interphase, but during mitosis becomes dramatically localized to the spindle poles and the spindle microtubules.
<b>Form</b>	There are three genes which encode an identical calcium binding protein which is one of the four subunits of phosphorylase kinase.

## Images



Western blot - Anti-Calmodulin 1/2/3 (phospho T79 + S81) antibody (ab61001)

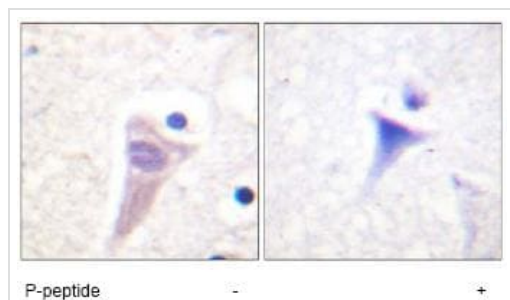
**All lanes :** Anti-Calmodulin 1/2/3 (phospho T79 + S81) antibody (ab61001) at 1/500 dilution

**Lane 1 :** HeLa cells treated with Hu (1mg/ml)

**Lane 2 :** Raw264.7 cells treated with TNFa (1mg/ml)

Lysates/proteins at 15  $\mu$ l per lane.

**Predicted band size:** 17 kDa



Immunohistochemistry (Formalin/PFA-fixed paraffin-embedded sections) - Anti-Calmodulin 1/2/3 (phospho T79 + S81) antibody (ab61001)

ab61001, at a 1/50 dilution, staining bi-phosphorylated Calmodulin on human brain tissue sections, in the presence (right) or absence (left) of the immunizing phosphopeptide.



Immunocytochemistry/ Immunofluorescence - Anti-Calmodulin 1/2/3 (phospho T79 + S81) antibody (ab61001)

Immunofluorescence analysis of HepG2 cells labeling Calmodulin (Phospho-Thr79+Ser81) with ab61001 at 1/100 dilution. The panel on the left is without the blocking peptide, while the panel on the right includes the blocking peptide.

**Please note:** All products are "FOR RESEARCH USE ONLY. NOT FOR USE IN DIAGNOSTIC PROCEDURES"

## **Our Abpromise to you: Quality guaranteed and expert technical support**

---

- Replacement or refund for products not performing as stated on the datasheet
- Valid for 12 months from date of delivery
- Response to your inquiry within 24 hours
  
- We provide support in Chinese, English, French, German, Japanese and Spanish
- Extensive multi-media technical resources to help you
- We investigate all quality concerns to ensure our products perform to the highest standards

If the product does not perform as described on this datasheet, we will offer a refund or replacement. For full details of the Abpromise, please visit <https://www.abcam.com/abpromise> or contact our technical team.

## **Terms and conditions**

---

- Guarantee only valid for products bought direct from Abcam or one of our authorized distributors