


Product datasheet

Anti-Calnexin (phospho S583) antibody ab58503

2 References 1 Image

Overview

| | |
|----------------------------|---|
| Product name | Anti-Calnexin (phospho S583) antibody |
| Description | Rabbit polyclonal to Calnexin (phospho S583) |
| Host species | Rabbit |
| Specificity | ab58503 detects endogenous levels of Calnexin - ER membrane marker only when phosphorylated at serine 583. Recognizes ER membrane, mitochondria and cis-Golgi |
| Tested applications | Suitable for: ELISA, WB, IHC-P |
| Species reactivity | Reacts with: Mouse, Human Predicted to work with: Rat  |
| Immunogen | Synthetic phosphopeptide derived from human Calnexin - ER membrane marker around the phosphorylation site of serine 583 (N-R-S ^P -P-R). |
| Positive control | HeLa cell extracts treated with EGF (200ng/ml, 30mins). |

Properties

| | |
|-----------------------------|---|
| Form | Liquid |
| Storage instructions | Shipped at 4°C. Store at -20°C. Stable for 12 months at -20°C. |
| Storage buffer | pH: 7.40 Preservative: 0.02% Sodium azide Constituents: PBS, 50% Glycerol, 0.87% Sodium chloride Without Mg ⁺² and Ca ⁺² |
| Purity | Immunogen affinity purified |
| Purification notes | ab58503 was affinity-purified from rabbit antiserum by affinity-chromatography using epitope-specific phosphopeptide. The antibody against non-phosphopeptide was removed by chromatography using non-phosphopeptide corresponding to the phosphorylation site. |
| Clonality | Polyclonal |
| Isotype | IgG |

Applications

Our [Abpromise guarantee](#) covers the use of **ab58503** in the following tested applications.

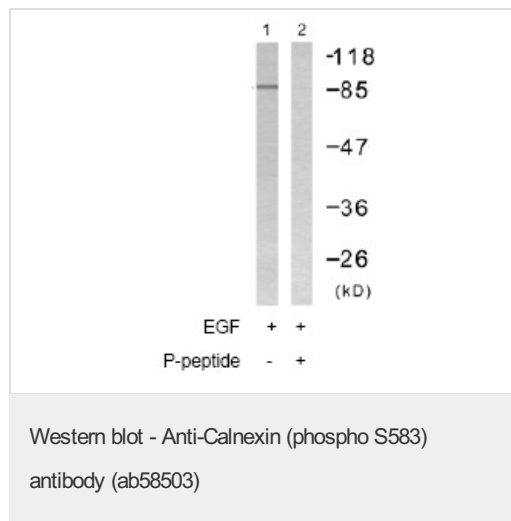
The application notes include recommended starting dilutions; optimal dilutions/concentrations should be determined by the end user.

| Application | Abreviews | Notes |
|-------------|-----------|--|
| ELISA | | 1/5000. |
| WB | | 1/500 - 1/1000. Detects a band of approximately 90 kDa (predicted molecular weight: 90 kDa). |
| IHC-P | | Use at an assay dependent concentration. PubMed: 22534324 |

Target

| | |
|------------------------------|---|
| Function | Calcium-binding protein that interacts with newly synthesized glycoproteins in the endoplasmic reticulum. It may act in assisting protein assembly and/or in the retention within the ER of unassembled protein subunits. It seems to play a major role in the quality control apparatus of the ER by the retention of incorrectly folded proteins. |
| Sequence similarities | Belongs to the calreticulin family. |
| Cellular localization | Endoplasmic reticulum membrane. Melanosome. Identified by mass spectrometry in melanosome fractions from stage I to stage IV. |

Images



All lanes : Anti-Calnexin (phospho S583) antibody (ab58503) at 1/500 dilution

Lane 1 : HeLa cell extract treated with EGF (200ng/ml, 30mins)

Lane 2 : HeLa cell extract treated with EGF (200ng/ml, 30mins) with immunising peptide

Predicted band size: 90 kDa

Observed band size: 90 kDa

Please note: All products are "FOR RESEARCH USE ONLY AND ARE NOT INTENDED FOR DIAGNOSTIC OR THERAPEUTIC USE"

Our Abpromise to you: Quality guaranteed and expert technical support

- Replacement or refund for products not performing as stated on the datasheet
- Valid for 12 months from date of delivery
- Response to your inquiry within 24 hours
- We provide support in Chinese, English, French, German, Japanese and Spanish

- Extensive multi-media technical resources to help you
- We investigate all quality concerns to ensure our products perform to the highest standards

If the product does not perform as described on this datasheet, we will offer a refund or replacement. For full details of the Abpromise, please visit <https://www.abcam.com/abpromise> or contact our technical team.

Terms and conditions

- Guarantee only valid for products bought direct from Abcam or one of our authorized distributors