




Product datasheet

Anti-Calponin 1 antibody - C-terminal ab203047

3 Images

Overview

Product name	Anti-Calponin 1 antibody - C-terminal
Description	Rabbit polyclonal to Calponin 1 - C-terminal
Host species	Rabbit
Tested applications	Suitable for: ELISA, IHC-Fr, WB, IHC-P
Species reactivity	Reacts with: Mouse, Rat, Sheep, Human Predicted to work with: Cow, Pig 
Immunogen	Synthetic peptide corresponding to Human Calponin 1 aa 240-290 (C terminal) conjugated to keyhole limpet haemocyanin. Sequence: TLNVS LQMG SNKGASQRGMTVYGLPRQVYDPKYCLTP EYPELGEPAHNHH A Database link: P51911  Run BLAST with  Run BLAST with
Positive control	Rat brain, Human gastric carcinoma and mouse stomach tissues.

Properties

Form	Liquid
Storage instructions	Shipped at 4°C. Store at +4°C short term (1-2 weeks). Upon delivery aliquot. Store at -20°C long term. Avoid freeze / thaw cycle.
Storage buffer	Preservative: 0.09% Sodium azide Constituents: 0.01% BSA, 50% Glycerol
Purity	Protein A purified
Clonality	Polyclonal
Isotype	IgG

Applications

Our [Abpromise guarantee](#) covers the use of **ab203047** in the following tested applications.

The application notes include recommended starting dilutions; optimal dilutions/concentrations should be determined by the end user.

Application	Abreviews	Notes
ELISA		1/500 - 1/1000.
IHC-Fr		1/100 - 1/500. (1/50 - 1/200 if using a fluorescent secondary antibody)
WB		1/100 - 1/1000. Predicted molecular weight: 33 kDa.
IHC-P		1/100 - 1/500. (1/50 - 1/200 if using a fluorescent secondary antibody)

Target

Function

Thin filament-associated protein that is implicated in the regulation and modulation of smooth muscle contraction. It is capable of binding to actin, calmodulin, troponin C and tropomyosin. The interaction of calponin with actin inhibits the actomyosin Mg-ATPase activity.

Tissue specificity

Smooth muscle, and tissues containing significant amounts of smooth muscle.

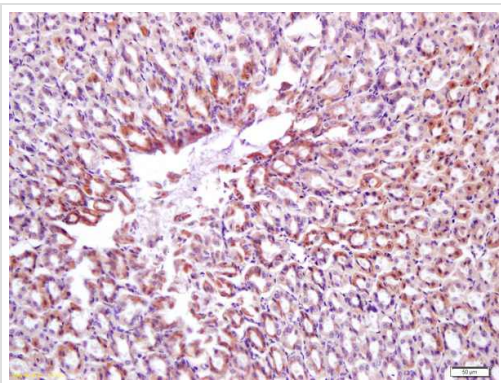
Sequence similarities

Belongs to the calponin family.

Contains 3 calponin-like repeats.

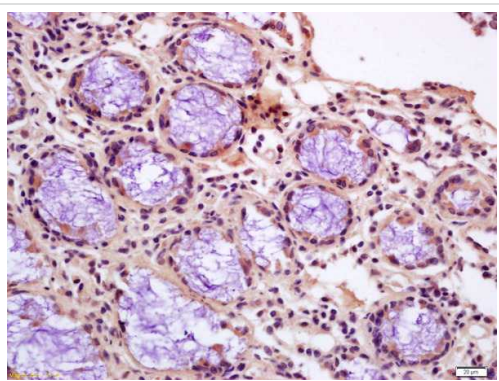
Contains 1 CH (calponin-homology) domain.

Images



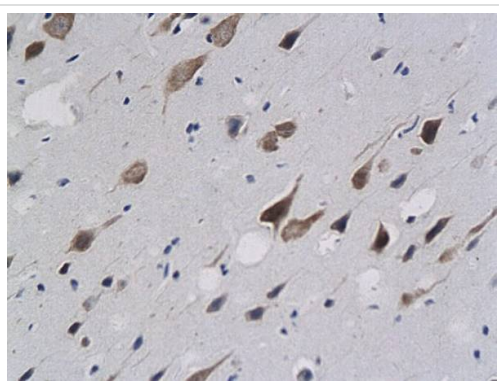
Immunohistochemical analysis of formalin-fixed paraffin-embedded mouse stomach tissue labeling Calponin 1 with ab203047 at 1/200 dilution.

Immunohistochemistry (Formalin/PFA-fixed paraffin-embedded sections) - Anti-Calponin 1 antibody - C-terminal (ab203047)



Immunohistochemical analysis of formalin-fixed paraffin-embedded Human gastric carcinoma tissue labeling Calponin 1 with ab203047 at 1/200 dilution.

Immunohistochemistry (Formalin/PFA-fixed paraffin-embedded sections) - Anti-Calponin 1 antibody - C-terminal (ab203047)



Immunohistochemical analysis of formalin-fixed paraffin-embedded rat brain tissue labeling Calponin 1 with ab203047 at 1/100 dilution.

Immunohistochemistry (Formalin/PFA-fixed paraffin-embedded sections) - Anti-Calponin 1 antibody - C-terminal (ab203047)

Please note: All products are "FOR RESEARCH USE ONLY. NOT FOR USE IN DIAGNOSTIC PROCEDURES"

Our Abpromise to you: Quality guaranteed and expert technical support

- Replacement or refund for products not performing as stated on the datasheet
- Valid for 12 months from date of delivery
- Response to your inquiry within 24 hours
- We provide support in Chinese, English, French, German, Japanese and Spanish
- Extensive multi-media technical resources to help you
- We investigate all quality concerns to ensure our products perform to the highest standards

If the product does not perform as described on this datasheet, we will offer a refund or replacement. For full details of the Abpromise, please visit <https://www.abcam.com/abpromise> or contact our technical team.

Terms and conditions

- Guarantee only valid for products bought direct from Abcam or one of our authorized distributors