


Product datasheet

Anti-Calreticulin antibody ab94935

[1 References](#) [2 Images](#)

Overview

Product name	Anti-Calreticulin antibody
Description	Chicken polyclonal to Calreticulin
Host species	Chicken
Tested applications	Suitable for: WB
Species reactivity	Reacts with: Mouse, Rat, Hamster, Dog, Human Predicted to work with: Rabbit, Cow, Pig, Zebrafish, Cynomolgus monkey 
Immunogen	Synthetic peptide corresponding to Mouse Calreticulin aa 24-43. Sequence: KEQFLDGDWNTNRWVESKHK (Peptide available as ab5838) Run BLAST with Run BLAST with

General notes

Reproducibility is key to advancing scientific discovery and accelerating scientists' next breakthrough.

Abcam is leading the way with our range of recombinant antibodies, knockout-validated antibodies and knockout cell lines, all of which support improved reproducibility.

We are also planning to innovate the way in which we present recommended applications and species on our product datasheets, so that only applications & species that have been tested in our own labs, our suppliers or by selected trusted collaborators are covered by our Abpromise™ guarantee.

In preparation for this, we have started to update the applications & species that this product is Abpromise guaranteed for.

We are also updating the applications & species that this product has been “predicted to work with,” however this information is not covered by our Abpromise guarantee.

Applications & species from publications and Abreviews that have not been tested in our own labs or in those of our suppliers are not covered by the Abpromise guarantee.

Please check that this product meets your needs before purchasing. If you have any questions, special requirements or concerns, please send us an inquiry and/or contact our Support team ahead of purchase. Recommended alternatives for this product can be found below, as well as customer reviews and Q&As.

Properties

Form	Liquid
Storage instructions	Shipped at 4°C. Upon delivery aliquot and store at -20°C. Avoid repeated freeze / thaw cycles.
Storage buffer	Preservative: 0.05% Sodium azide Constituent: 0.1% BSA
Purity	Immunogen affinity purified
Clonality	Polyclonal
Isotype	IgY

Applications

Our [Abpromise guarantee](#) covers the use of **ab94935** in the following tested applications.

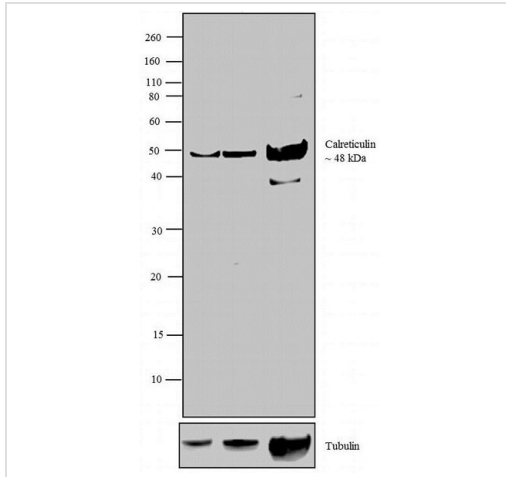
The application notes include recommended starting dilutions; optimal dilutions/concentrations should be determined by the end user.

Application	Abreviews	Notes
WB		1/1000. Detects a band of approximately 60-66 kDa (predicted molecular weight: 48 kDa).

Target

Function	Molecular calcium-binding chaperone promoting folding, oligomeric assembly and quality control in the ER via the calreticulin/calnexin cycle. This lectin interacts transiently with almost all of the monoglucosylated glycoproteins that are synthesized in the ER. Interacts with the DNA-binding domain of NR3C1 and mediates its nuclear export.
Sequence similarities	Belongs to the calreticulin family.
Domain	Can be divided into a N-terminal globular domain, a proline-rich P-domain forming an elongated arm-like structure and a C-terminal acidic domain. The P-domain binds one molecule of calcium with high affinity, whereas the acidic C-domain binds multiple calcium ions with low affinity. The interaction with glycans occurs through a binding site in the globular lectin domain. The zinc binding sites are localized to the N-domain. Associates with PDIA3 through the tip of the extended arm formed by the P-domain.
Cellular localization	Endoplasmic reticulum lumen. Cytoplasm > cytosol. Secreted > extracellular space > extracellular matrix. Cell surface. Also found in cell surface (T cells), cytosol and extracellular matrix. Associated with the lytic granules in the cytolytic T-lymphocytes.

Images



Western blot - Anti-Calreticulin antibody (ab94935)

All lanes : Anti-Calreticulin antibody (ab94935) at 1/2000 dilution

Lane 1 : A-549

Lane 2 : HEK 293

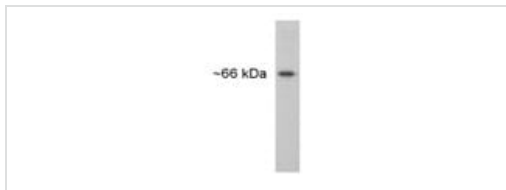
Lane 3 : Mouse Brain

Lysates/proteins at 30 µg per lane.

Secondary

All lanes : Goat anti-Chicken IgY (H+L) Secondary Antibody, HRP conjugate at 0.4 µg/ml

Predicted band size: 48 kDa



Western blot - Anti-Calreticulin antibody (ab94935)

Anti-Calreticulin antibody (ab94935) at 1/1000 dilution + AtT-20 cell lysate

Predicted band size: 48 kDa

Please note: All products are "FOR RESEARCH USE ONLY. NOT FOR USE IN DIAGNOSTIC PROCEDURES"

Our Abpromise to you: Quality guaranteed and expert technical support

- Replacement or refund for products not performing as stated on the datasheet
- Valid for 12 months from date of delivery
- Response to your inquiry within 24 hours
- We provide support in Chinese, English, French, German, Japanese and Spanish
- Extensive multi-media technical resources to help you
- We investigate all quality concerns to ensure our products perform to the highest standards

If the product does not perform as described on this datasheet, we will offer a refund or replacement. For full details of the Abpromise, please visit <https://www.abcam.com/abpromise> or contact our technical team.

Terms and conditions

- Guarantee only valid for products bought direct from Abcam or one of our authorized distributors