


Product datasheet

Anti-CAMK1D antibody ab97803

3 Images

Overview

Product name	Anti-CAMK1D antibody
Description	Rabbit polyclonal to CAMK1D
Host species	Rabbit
Tested applications	Suitable for: WB, IHC-P, ICC/IF
Species reactivity	Reacts with: Human Predicted to work with: Zebrafish 
Immunogen	Recombinant fragment, corresponding to a sequence within amino acids 1-355 of Human CAMK1D (AAH35745).
Positive control	WB: 293T, HeLaS3, HepG2, MOLT4 or Raji whole cell lysate; ICC/IF: HeLa cells; IHC-P: OVCAR3 xenograft tissue.
General notes	<p>The Life Science industry has been in the grips of a reproducibility crisis for a number of years. Abcam is leading the way in addressing this with our range of recombinant monoclonal antibodies and knockout edited cell lines for gold-standard validation. Please check that this product meets your needs before purchasing.</p> <p>If you have any questions, special requirements or concerns, please send us an inquiry and/or contact our Support team ahead of purchase. Recommended alternatives for this product can be found below, along with publications, customer reviews and Q&As</p>

Properties

Form	Liquid
Storage instructions	Shipped at 4°C. Upon delivery aliquot and store at -20°C or -80°C. Avoid repeated freeze / thaw cycles.
Storage buffer	pH: 7.00 Preservative: 0.01% Thimerosal (merthiolate) Constituents: 1.21% Tris, 0.75% Glycine, 10% Glycerol (glycerin, glycerine)
Purity	Immunogen affinity purified
Clonality	Polyclonal
Isotype	IgG

Applications

The Abpromise guarantee

Our **Abpromise guarantee** covers the use of ab97803 in the following tested applications.

The application notes include recommended starting dilutions; optimal dilutions/concentrations should be determined by the end user.

Application	Abreviews	Notes
WB		1/500 - 1/3000. Predicted molecular weight: 43 kDa.
IHC-P		Use at an assay dependent concentration.
ICC/IF		1/100 - 1/200.

Target

Function

Calcium/calmodulin-dependent protein kinase belonging to a proposed calcium-triggered signaling cascade. May regulate calcium-mediated granulocyte function. May play a role in apoptosis of erythroleukemia cells. Activates MAP kinase MAPK3 (By similarity). In vitro, phosphorylates transcription factor CREM isoform Beta and probably CREB1.

Tissue specificity

Broadly expressed. Highly and mostly expressed in polymorphonuclear leukocytes (neutrophilic and eosinophilic granulocytes) while little or no expression is observed in monocytes and lymphocytes.

Sequence similarities

Belongs to the protein kinase superfamily. CAMK Ser/Thr protein kinase family. CaMK subfamily. Contains 1 protein kinase domain.

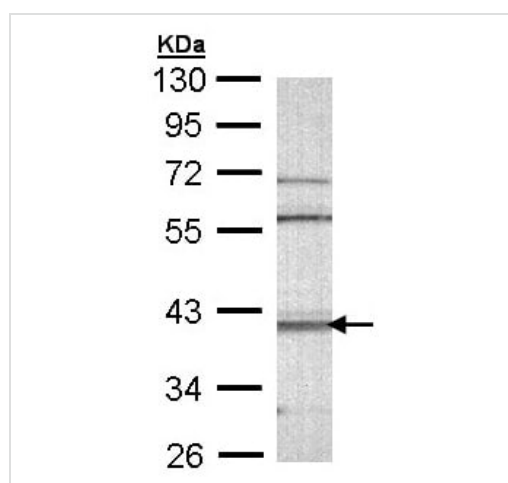
Domain

The autoinhibitory domain overlaps with the calmodulin binding region and interacts in the inactive folded state with the catalytic domain as a pseudosubstrate.

Cellular localization

Cytoplasm. Nucleus. Predominantly cytoplasmic (Probable). Also nuclear upon activation.

Images

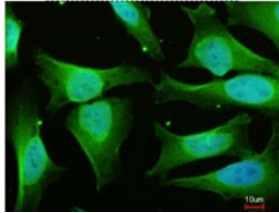
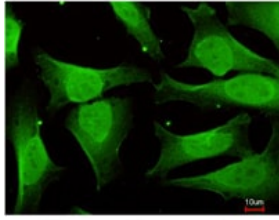


Western blot - Anti-CAMK1D antibody (ab97803)

Anti-CAMK1D antibody (ab97803) at 1/1000 dilution + MOLT4 whole cell lysate at 30 µg

Predicted band size: 43 kDa

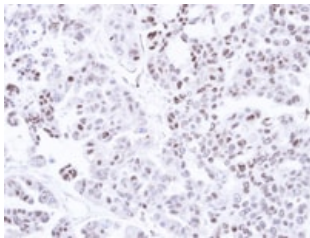
10% SDS-PAGE.



Immunocytochemistry/ Immunofluorescence - Anti-CAMK1D antibody (ab97803)

Top: ab97803 at 1/200 dilution staining CAMK1D in PFA-fixed HeLa cells by immunofluorescence.

Bottom: image merged with DNA probe.



Immunohistochemistry (Formalin/PFA-fixed paraffin-embedded sections) - Anti-CAMK1D antibody (ab97803)

ab97803 at 1/500 dilution staining CAMK1D in paraffin-embedded OVCAR3 xenograft by immunohistochemistry.

Please note: All products are "FOR RESEARCH USE ONLY. NOT FOR USE IN DIAGNOSTIC PROCEDURES"

Our Abpromise to you: Quality guaranteed and expert technical support

- Replacement or refund for products not performing as stated on the datasheet
- Valid for 12 months from date of delivery
- Response to your inquiry within 24 hours
- We provide support in Chinese, English, French, German, Japanese and Spanish
- Extensive multi-media technical resources to help you
- We investigate all quality concerns to ensure our products perform to the highest standards

If the product does not perform as described on this datasheet, we will offer a refund or replacement. For full details of the Abpromise, please visit <https://www.abcam.com/abpromise> or contact our technical team.

Terms and conditions

- Guarantee only valid for products bought direct from Abcam or one of our authorized distributors