

Product datasheet

Anti-CAMSAP2 antibody [EPR7718(B)] ab140619

Recombinant RabMAb

3 Images

Overview

Product name	Anti-CAMSAP2 antibody [EPR7718(B)]
Description	Rabbit monoclonal [EPR7718(B)] to CAMSAP2
Host species	Rabbit
Tested applications	Suitable for: WB, Flow Cyt Unsuitable for: ICC, IHC-P or IP
Species reactivity	Reacts with: Human
Immunogen	Synthetic peptide within Human CAMSAP2 aa 1-100 (N terminal). The exact sequence is proprietary.
Positive control	HeLa, PC3, 293T and Human fetal brain cell lysates; HeLa cells.
General notes	Mouse, Rat: We have preliminary internal testing data to indicate this antibody may not react with these species. Please contact us for more information.

This product was previously labelled as CAMSAP1L1

This product is a recombinant monoclonal antibody, which offers several advantages including:

- High batch-to-batch consistency and reproducibility
- Improved sensitivity and specificity
- Long-term security of supply
- Animal-free production

For more information [see here](#).

Our RabMAb[®] technology is a patented hybridoma-based technology for making rabbit monoclonal antibodies. For details on our patents, please refer to [RabMAb[®] patents](#).

Reproducibility is key to advancing scientific discovery and accelerating scientists' next breakthrough.

Abcam is leading the way with our range of recombinant antibodies, knockout-validated antibodies and knockout cell lines, all of which support improved reproducibility.

We are also planning to innovate the way in which we present recommended applications and species on our product datasheets, so that only applications & species that have been tested in our own labs, our suppliers or by selected trusted collaborators are covered by our Abpromise[™] guarantee.

In preparation for this, we have started to update the applications & species that this product is Abpromise guaranteed for.

We are also updating the applications & species that this product has been “predicted to work with,” however this information is not covered by our Abpromise guarantee.

Applications & species from publications and Abreviews that have not been tested in our own labs or in those of our suppliers are not covered by the Abpromise guarantee.

Please check that this product meets your needs before purchasing. If you have any questions, special requirements or concerns, please send us an inquiry and/or contact our Support team ahead of purchase. Recommended alternatives for this product can be found below, as well as customer reviews and Q&As.

Properties

Form	Liquid
Storage instructions	Shipped at 4°C. Store at -20°C.
Storage buffer	pH: 7.2 Preservative: 0.01% Sodium azide Constituents: 9% PBS, 40% Glycerol (glycerin, glycerine), 0.05% BSA, 50% Tissue culture supernatant
Purity	Tissue culture supernatant
Clonality	Monoclonal
Clone number	EPR7718(B)
Isotype	IgG

Applications

Our [Abpromise guarantee](#) covers the use of **ab140619** in the following tested applications.

The application notes include recommended starting dilutions; optimal dilutions/concentrations should be determined by the end user.

Application	Abreviews	Notes
WB		1/1000 - 1/10000. Predicted molecular weight: 168 kDa.
Flow Cyt		1/10 - 1/100. ab172730 - Rabbit monoclonal IgG, is suitable for use as an isotype control with this antibody.

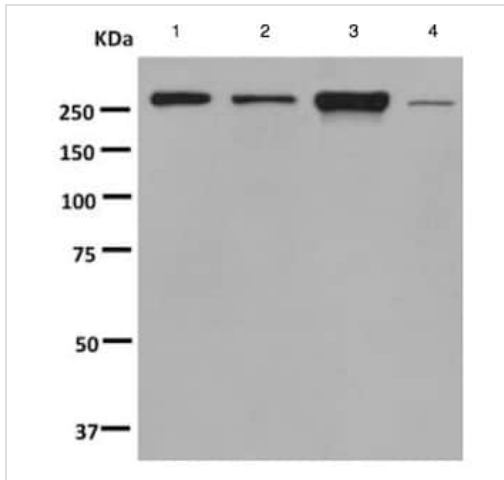
Application notes	Is unsuitable for ICC, IHC-P or IP.
--------------------------	-------------------------------------

Target

Relevance CAMSAP1L1 (Calmodulin regulated spectrin associated protein 1 like protein 1) is related to CAMSAP1. Both contain an N terminal CH (calponin homology domain) which is an actin binding domain found in cytoskeletal and signal transduction proteins. The CAMSAP1 family of proteins also contains a unique C terminal CKK (DUF1781) domain which has been found to bind

microtubules. The function of CAMSAP1L1 has not been characterized.

Images



Western blot - Anti-CAMSAP2 antibody
[EPR7718(B)] (ab140619)

All lanes : Anti-CAMSAP2 antibody [EPR7718(B)] (ab140619) at 1/1000 dilution

Lane 1 : HeLa cell lysate

Lane 2 : PC3 cell lysate

Lane 3 : 293T cell lysate

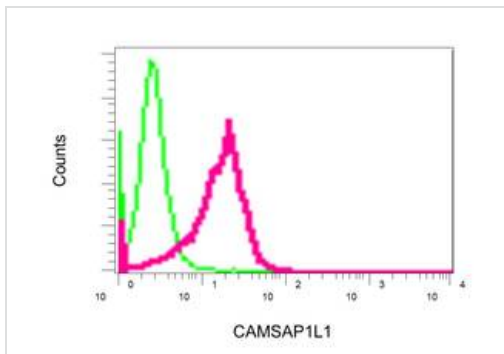
Lane 4 : Human fetal brain lysate

Lysates/proteins at 10 µg per lane.

Secondary

All lanes : HRP labelled goat anti-rabbit IgG at 1/2000 dilution

Predicted band size: 168 kDa



Flow Cytometry - Anti-CAMSAP2 antibody
[EPR7718(B)] (ab140619)

Flow cytometric analysis of HeLa cells labelling CAMSAP2 with ab140619 at 1/10 dilution (red); rabbit IgG negative (green).

Why choose a recombinant antibody?



Research with confidence
Consistent and reproducible results



Long-term and scalable supply
Recombinant technology



Success from the first experiment
Confirmed specificity



Ethical standards compliant
Animal-free production

Anti-CAMSAP2 antibody [EPR7718(B)] (ab140619)

Please note: All products are "FOR RESEARCH USE ONLY. NOT FOR USE IN DIAGNOSTIC PROCEDURES"

Our Abpromise to you: Quality guaranteed and expert technical support

- Replacement or refund for products not performing as stated on the datasheet
- Valid for 12 months from date of delivery
- Response to your inquiry within 24 hours
- We provide support in Chinese, English, French, German, Japanese and Spanish
- Extensive multi-media technical resources to help you
- We investigate all quality concerns to ensure our products perform to the highest standards

If the product does not perform as described on this datasheet, we will offer a refund or replacement. For full details of the Abpromise, please visit <https://www.abcam.com/abpromise> or contact our technical team.

Terms and conditions

- Guarantee only valid for products bought direct from Abcam or one of our authorized distributors