


Product datasheet

Anti-CAND1 antibody [EPR14242(B)] - C-terminal ab181216

Recombinant RabMAb

★★★★★ 1 Abreviews 6 Images

Overview

Product name	Anti-CAND1 antibody [EPR14242(B)] - C-terminal
Description	Rabbit monoclonal [EPR14242(B)] to CAND1 - C-terminal
Host species	Rabbit
Tested applications	Suitable for: WB, IHC-P, ICC/IF, IP, Flow Cyt (Intra)
Species reactivity	Reacts with: Human Predicted to work with: Mouse, Rat 
Immunogen	Synthetic peptide. This information is proprietary to Abcam and/or its suppliers.
Positive control	Jurkat cells, HeLa cells, Human prostatic hyperplasia tissue, Saos 2 cell line lysate, 293T cell line lysate.
General notes	<p>This product is a recombinant monoclonal antibody, which offers several advantages including:</p> <ul style="list-style-type: none"> - High batch-to-batch consistency and reproducibility - Improved sensitivity and specificity - Long-term security of supply - Animal-free production <p>For more information see here.</p> <p>Our RabMAb[®] technology is a patented hybridoma-based technology for making rabbit monoclonal antibodies. For details on our patents, please refer to RabMAb[®] patents.</p>

Properties

Form	Liquid
Storage instructions	Shipped at 4°C. Store at +4°C short term (1-2 weeks). Upon delivery aliquot. Store at -20°C long term. Avoid freeze / thaw cycle.
Storage buffer	Preservative: 0.01% Sodium azide Constituents: 59% PBS, 40% Glycerol, 0.05% BSA
Purity	Protein A purified
Clonality	Monoclonal
Clone number	EPR14242(B)

Isotype

IgG

Applications

The Abpromise guarantee

Our [Abpromise guarantee](#) covers the use of ab181216 in the following tested applications.

The application notes include recommended starting dilutions; optimal dilutions/concentrations should be determined by the end user.

Application	Abreviews	Notes
WB		1/10000 - 1/50000. Detects a band of approximately 130 kDa (predicted molecular weight: 136 kDa).
IHC-P		1/50 - 1/100. Perform heat mediated antigen retrieval with Tris/EDTA buffer pH 9.0 before commencing with IHC staining protocol.
ICC/IF	★★★★★ (1)	1/100 - 1/250.
IP		1/40 - 1/60.
Flow Cyt (Intra)		1/20. ab172730 - Rabbit monoclonal IgG, is suitable for use as an isotype control with this antibody.

Target

Function

Enhances transcription from various types of promoters (By similarity). Regulatory protein that interferes with the assembly of the SCF (SKP1-CUL1-F-box protein) ubiquitin ligase complex and thereby down-regulates ubiquitination of target proteins. Prevents neddylation of CUL1 by physically blocking access to the neddylation site. Disrupts interactions between CUL1 and SKP1 and between CUL1 and F-box proteins.

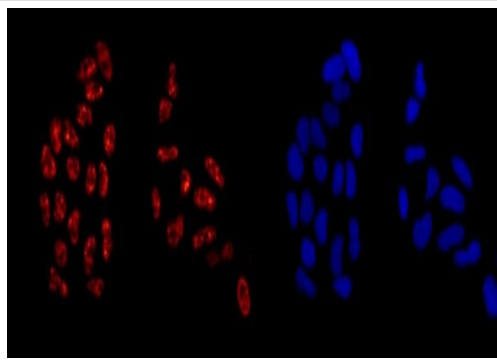
Sequence similarities

Belongs to the CAND family.
Contains 27 HEAT repeats.

Cellular localization

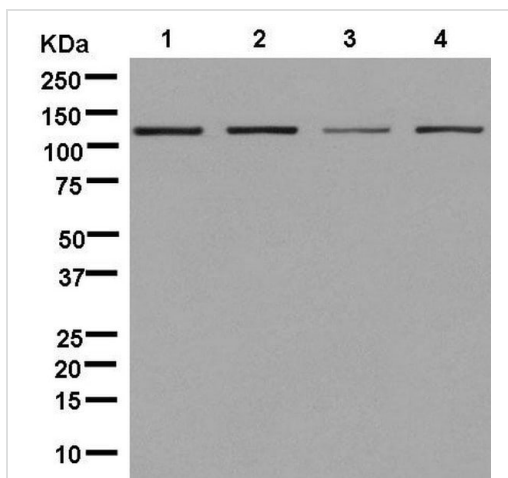
Nucleus.

Images



Immunocytochemistry/ Immunofluorescence - Anti-CAND1 antibody [EPR14242(B)] - C-terminal (ab181216)

Immunofluorescent analysis of HeLa cells (-20 min acetone-fixed) labeling CAND1 with ab181216 at 1/250 dilution followed by Goat anti rabbit IgG (Alexa Fluor® 555) at 1/200 dilution and counterstained with Dapi (blue).



Western blot - Anti-CAND1 antibody [EPR14242(B)] - C-terminal (ab181216)

All lanes : Anti-CAND1 antibody [EPR14242(B)] - C-terminal (ab181216) at 1/50000 dilution

Lane 1 : 293T cell line lysate

Lane 2 : HeLa cell line lysate

Lane 3 : Jurkat cell line lysate

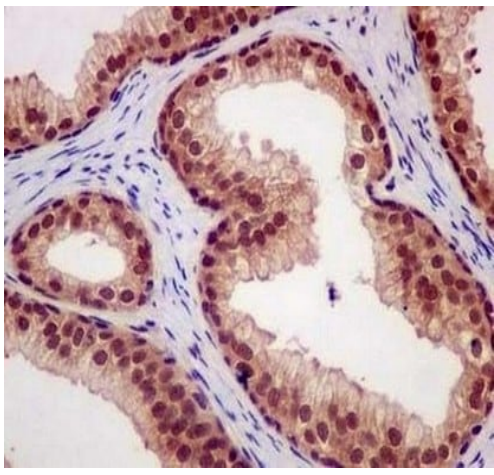
Lane 4 : Saos 2 cell line lysate

Lysates/proteins at 20 µg per lane.

Secondary

All lanes : Goat Anti-Rabbit IgG, (H+L), Peroxidase conjugated antibody at 1/1000 dilution

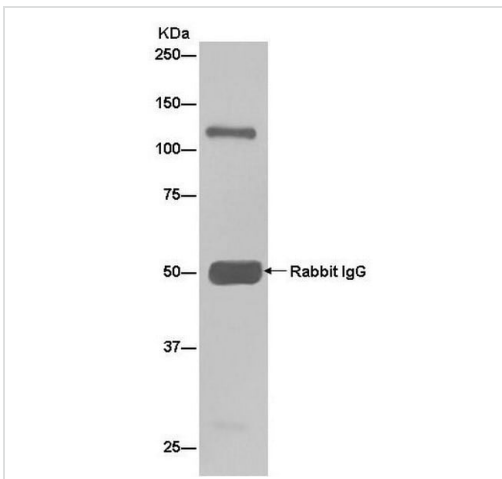
Predicted band size: 136 kDa



Immunohistochemistry (Formalin/PFA-fixed paraffin-embedded sections) - Anti-CAND1 antibody [EPR14242(B)] - C-terminal (ab181216)

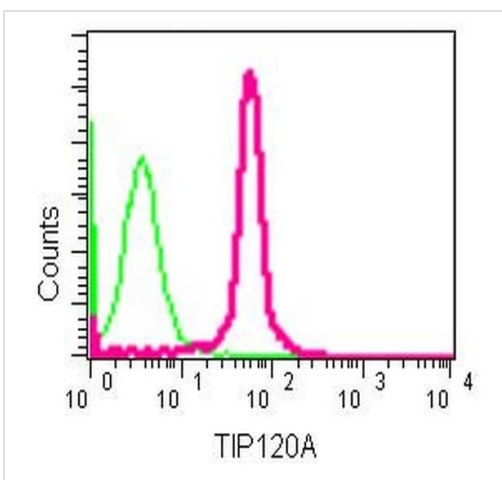
Immunohistochemical analysis of paraffin-embedded Human prostatic hyperplasia tissue labeling CAND1 with ab181216 at 1/100 dilution followed by pre-diluted HRP-conjugated secondary antibody and counter-stained with Hematoxylin.

Perform heat mediated antigen retrieval with EDTA buffer pH 9 before commencing with IHC staining protocol.



Immunoprecipitation - Anti-CAND1 antibody [EPR14242(B)] - C-terminal (ab181216)

Western blot analysis of immunoprecipitation pellet from HeLa cell lysate immunoprecipitated using ab181216 at 1/50 dilution. Secondary: Goat Anti-Rabbit IgG, (H+L), Peroxidase conjugate at 1/1000 dilution.



Flow Cytometry (Intracellular) - Anti-CAND1 antibody [EPR14242(B)] - C-terminal (ab181216)

Intracellular flow cytometric analysis of Jurkat cells (2% paraformaldehyde-fixed) labeling CAND1 with ab181216 at 1/20 dilution (red) or a rabbit IgG (negative) (green), followed by Goat anti rabbit IgG (FITC) secondary at 1/150 dilution.

Why choose a recombinant antibody?



Research with confidence
Consistent and reproducible results



Long-term and scalable supply
Recombinant technology



Success from the first experiment
Confirmed specificity



Ethical standards compliant
Animal-free production

Anti-CAND1 antibody [EPR14242(B)] - C-terminal
(ab181216)

Please note: All products are "FOR RESEARCH USE ONLY. NOT FOR USE IN DIAGNOSTIC PROCEDURES"

Our Abpromise to you: Quality guaranteed and expert technical support

- Replacement or refund for products not performing as stated on the datasheet
- Valid for 12 months from date of delivery
- Response to your inquiry within 24 hours
- We provide support in Chinese, English, French, German, Japanese and Spanish
- Extensive multi-media technical resources to help you
- We investigate all quality concerns to ensure our products perform to the highest standards

If the product does not perform as described on this datasheet, we will offer a refund or replacement. For full details of the Abpromise, please visit <https://www.abcam.com/abpromise> or contact our technical team.

Terms and conditions

- Guarantee only valid for products bought direct from Abcam or one of our authorized distributors