


Product datasheet

Anti-Cannabinoid Receptor I antibody ab118277

1 Image

Overview

| | |
|----------------------------|---|
| Product name | Anti-Cannabinoid Receptor I antibody |
| Description | Goat polyclonal to Cannabinoid Receptor I |
| Host species | Goat |
| Specificity | ab118277 is expected to recognize reported isoform a (NP_057167.2) only. Reported variants represent identical protein: NP_001153731.1, NP_001153732.1, NP_057167.2, NP_001153730.1, NP_001153698.1 |
| Tested applications | Suitable for: WB |
| Species reactivity | Reacts with: Mouse, Human Predicted to work with: Rat, Cow, Cat, Dog  |
| Immunogen | Synthetic peptide: SNDIQYEDIKGDMS with a Cysteine residue linker, corresponding to N terminal amino acids 25-39 of Human Cannabinoid Receptor I (NP_057167.2). Run BLAST with Run BLAST with |
| Positive control | A549 and NIH 3T3 cell lysates. |

Properties

| | |
|-----------------------------|---|
| Form | Liquid |
| Storage instructions | Shipped at 4°C. Upon delivery aliquot. Store at -20°C or -80°C. Avoid freeze / thaw cycle. |
| Storage buffer | pH: 7.30 Preservative: 0.02% Sodium azide Constituents: 99% Tris buffered saline, 0.5% BSA |
| Purity | Immunogen affinity purified |
| Purification notes | ab118277 is purified from Goat serum by ammonium sulphate precipitation followed by antigen affinity chromatography using the immunizing peptide. |
| Clonality | Polyclonal |
| Isotype | IgG |

Applications

Our [Abpromise guarantee](#) covers the use of **ab118277** in the following tested applications.

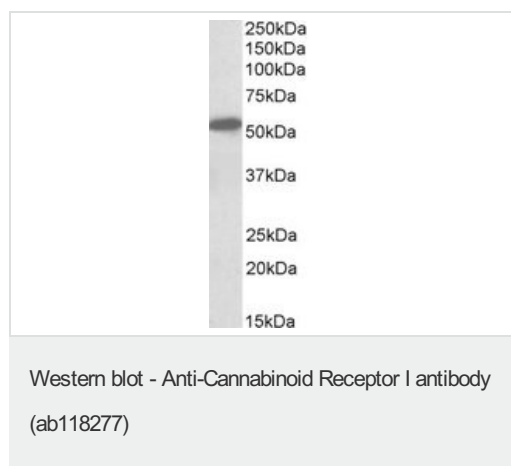
The application notes include recommended starting dilutions; optimal dilutions/concentrations should be determined by the end user.

| Application | Abreviews | Notes |
|-------------|-----------|--|
| WB | | Use a concentration of 1 - 3 µg/ml. Detects a band of approximately 53 kDa (predicted molecular weight: 53 kDa). |

Target

| | |
|------------------------------|---|
| Function | Involved in cannabinoid-induced CNS effects. Acts by inhibiting adenylate cyclase. Could be a receptor for anandamide. Inhibits L-type Ca(2+) channel current. Isoform 2 and isoform 3 have altered ligand binding. |
| Tissue specificity | Widely expressed. |
| Sequence similarities | Belongs to the G-protein coupled receptor 1 family. |
| Cellular localization | Cell membrane. |

Images



Anti-Cannabinoid Receptor I antibody (ab118277) at 1 µg/ml + NIH 3T3 lysate (in RIPA buffer) at 35 µg

Developed using the ECL technique.

Predicted band size: 53 kDa

Exposure time: 1 hour

Please note: All products are "FOR RESEARCH USE ONLY. NOT FOR USE IN DIAGNOSTIC PROCEDURES"

Our Abpromise to you: Quality guaranteed and expert technical support

- Replacement or refund for products not performing as stated on the datasheet
- Valid for 12 months from date of delivery
- Response to your inquiry within 24 hours
- We provide support in Chinese, English, French, German, Japanese and Spanish
- Extensive multi-media technical resources to help you
- We investigate all quality concerns to ensure our products perform to the highest standards

If the product does not perform as described on this datasheet, we will offer a refund or replacement. For full details of the Abpromise,

please visit <https://www.abcam.com/abpromise> or contact our technical team.

Terms and conditions

- Guarantee only valid for products bought direct from Abcam or one of our authorized distributors