


Product datasheet

Anti-Cannabinoid Receptor I antibody ab3558

1 Abreviews 3 References 2 Images

Overview

Product name	Anti-Cannabinoid Receptor I antibody
Description	Rabbit polyclonal to Cannabinoid Receptor I
Host species	Rabbit
Specificity	Detects CB1 from Human and Rat tissues as well as transfected Rat CB1.
Tested applications	Suitable for: ICC, WB, IP, IHC-P, IHC-Fr, ICC/IF, Flow Cyt
Species reactivity	Reacts with: Mouse, Rat, Rabbit, Human, Ferret Predicted to work with: Cat, Chimpanzee, Rhesus monkey 
Immunogen	Fusion protein corresponding to Human Cannabinoid Receptor I aa 1-99 (N terminal).

Properties

Form	Liquid
Storage instructions	Shipped at 4°C. Store at +4°C short term (1-2 weeks). Upon delivery aliquot. Store at -20°C or -80°C. Avoid freeze / thaw cycle.
Storage buffer	Preservative: 0.05% Sodium azide Constituents: 50% Glycerol, 0.1% BSA, 49% PBS
Purity	Immunogen affinity purified
Clonality	Polyclonal
Isotype	IgG

Applications

Our [Abpromise guarantee](#) covers the use of **ab3558** in the following tested applications.

The application notes include recommended starting dilutions; optimal dilutions/concentrations should be determined by the end user.

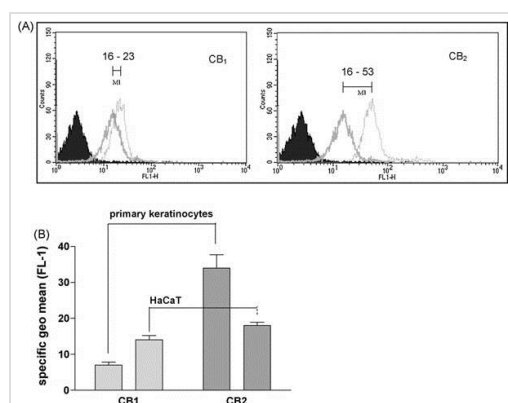
Application	Abreviews	Notes
ICC		1/1000. Immunocytochemical staining of CB1 in AtT20 cells transfected with the rat CB1 gene yields a pattern consistent with plasma membrane staining.

Application	Abreviews	Notes
WB		1/250. By Western blot, this antibody detects an ~60 kDa protein representing CB1 from rat brain homogenate.
IP		Use at an assay dependent concentration. PubMed: 22387618
IHC-P		Use at an assay dependent concentration.
IHC-Fr		Use at an assay dependent concentration.
ICC/IF		Use at an assay dependent concentration.
Flow Cyt		Use at an assay dependent concentration. PubMed: 20206138 ab171870 - Rabbit polyclonal IgG, is suitable for use as an isotype control with this antibody.

Target

Function	Involved in cannabinoid-induced CNS effects. Acts by inhibiting adenylate cyclase. Could be a receptor for anandamide. Inhibits L-type Ca(2+) channel current. Isoform 2 and isoform 3 have altered ligand binding.
Tissue specificity	Widely expressed.
Sequence similarities	Belongs to the G-protein coupled receptor 1 family.
Cellular localization	Cell membrane.

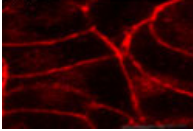
Images



Flow Cytometry - Anti-Cannabinoid Receptor I antibody (ab3558)

Image from Leonti Met al, *Biochem Pharmacol.* 2010 Jun 15;79(12):1815-26. Epub 2010 Mar 3, Fig 6. DOI 10.1016/j.bcp.2010.02.015

Quantification of CB1 and CB2 receptor surface expression in primary Human and HaCaT keratinocytes. (A) FL-1 shows autofluorescence (black population), non-specific binding of secondary antibody (dark grey population) and specific immunofluorescence obtained with CB1 (ab3558) and CB2 (ab3561) receptor antibodies, respectively (light grey population). Histogram shows representative measurement (5000 cells counted). (B) Differences in CB receptor expression between primary and HaCaT keratinocytes, showing marked increased expression of CB2 in primary keratinocytes (geo mean corrected for non-specific binding of secondary Ab). Data show mean values \pm SEM obtained with two human primary keratinocyte samples and HaCaT cells, each measured three times.



ab3558 at a 1:1000 dilution staining Rat CB1 in transfected AtT20 cells by immunocytochemistry.

Immunocytochemistry/ Immunofluorescence - Anti-Cannabinoid Receptor 1 antibody (ab3558)

Please note: All products are "FOR RESEARCH USE ONLY. NOT FOR USE IN DIAGNOSTIC PROCEDURES"

Our Abpromise to you: Quality guaranteed and expert technical support

- Replacement or refund for products not performing as stated on the datasheet
- Valid for 12 months from date of delivery
- Response to your inquiry within 24 hours

- We provide support in Chinese, English, French, German, Japanese and Spanish
- Extensive multi-media technical resources to help you
- We investigate all quality concerns to ensure our products perform to the highest standards

If the product does not perform as described on this datasheet, we will offer a refund or replacement. For full details of the Abpromise, please visit <https://www.abcam.com/abpromise> or contact our technical team.

Terms and conditions

- Guarantee only valid for products bought direct from Abcam or one of our authorized distributors