

## Product datasheet

# Anti-Cannabinoid Receptor I (phospho S316) antibody [EPR2223(N)] ab186428

Recombinant RabMAb

★★★★☆ [1 Abreviews](#) [2 References](#) [2 Images](#)

### Overview

<b>Product name</b>	Anti-Cannabinoid Receptor I (phospho S316) antibody [EPR2223(N)]
<b>Description</b>	Rabbit monoclonal [EPR2223(N)] to Cannabinoid Receptor I (phospho S316)
<b>Host species</b>	Rabbit
<b>Tested applications</b>	<b>Suitable for:</b> WB <b>Unsuitable for:</b> Flow Cyt (Intra)
<b>Species reactivity</b>	<b>Reacts with:</b> Human
<b>Immunogen</b>	Synthetic peptide. This information is proprietary to Abcam and/or its suppliers.
<b>Positive control</b>	WB: Human fetal brain lysate.
<b>General notes</b>	<p>This product is a recombinant monoclonal antibody, which offers several advantages including:</p> <ul style="list-style-type: none"><li>- High batch-to-batch consistency and reproducibility</li><li>- Improved sensitivity and specificity</li><li>- Long-term security of supply</li><li>- Animal-free production</li></ul> <p>For more information <a href="#">see here</a>.</p> <p>Our RabMAb<sup>®</sup> technology is a patented hybridoma-based technology for making rabbit monoclonal antibodies. For details on our patents, please refer to <a href="#">RabMAb<sup>®</sup> patents</a>.</p>

### Properties

<b>Form</b>	Liquid
<b>Storage instructions</b>	Shipped at 4°C. Store at +4°C short term (1-2 weeks). Upon delivery aliquot. Store at -20°C long term. Avoid freeze / thaw cycle.
<b>Storage buffer</b>	pH: 7.2 Preservative: 0.01% Sodium azide Constituents: 59% PBS, 40% Glycerol (glycerin, glycerine), 0.05% BSA
<b>Purity</b>	Protein A purified
<b>Clonality</b>	Monoclonal
<b>Clone number</b>	EPR2223(N)

Isotype

IgG

## Applications

### The Abpromise guarantee

Our **Abpromise guarantee** covers the use of ab186428 in the following tested applications.

The application notes include recommended starting dilutions; optimal dilutions/concentrations should be determined by the end user.

Application	Abreviews	Notes
WB	★★★★★ (1)	1/1000. Detects a band of approximately 46, 53 kDa (predicted molecular weight: 53 kDa).

### Application notes

Is unsuitable for Flow Cyt (Intra).

## Target

### Function

Involved in cannabinoid-induced CNS effects. Acts by inhibiting adenylate cyclase. Could be a receptor for anandamide. Inhibits L-type Ca(2+) channel current. Isoform 2 and isoform 3 have altered ligand binding.

### Tissue specificity

Widely expressed.

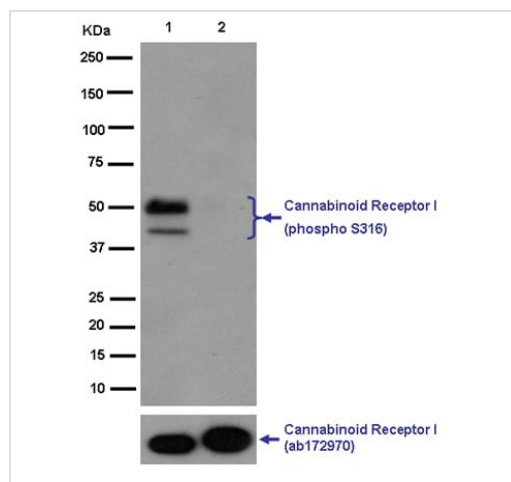
### Sequence similarities

Belongs to the G-protein coupled receptor 1 family.

### Cellular localization

Cell membrane.

## Images



Western blot - Anti-Cannabinoid Receptor I (phospho S316) antibody [EPR2223(N)] (ab186428)

**All lanes** : Anti-Cannabinoid Receptor I (phospho S316) antibody [EPR2223(N)] (ab186428) at 1/1000 dilution

**Lane 1** : Human fetal brain lysate

**Lane 2** : Human fetal brain lysate with Lambda phosphatase

Lysates/proteins at 1/10 dilution per lane.

### Secondary

**All lanes** : Goat Anti-Rabbit IgG, (H+L), Peroxidase conjugated at 1/1000 dilution

**Predicted band size:** 53 kDa


**Observed band size:** 53 kDa

**Additional bands at:** 46 kDa (possible isoform)

Based on the sequence analysis, ab186428 recognizes three

isoforms with the predicted MWs of 53KDa, 46KDa and 49KDa, respectively.

Why choose a recombinant antibody?



- Research with confidence**  
Consistent and reproducible results
- Long-term and scalable supply**  
Recombinant technology
- Success from the first experiment**  
Confirmed specificity
- Ethical standards compliant**  
Animal-free production

Anti-Cannabinoid Receptor 1 (phospho S316)  
antibody [EPR2223(N)] (ab186428)

**Please note:** All products are "FOR RESEARCH USE ONLY. NOT FOR USE IN DIAGNOSTIC PROCEDURES"

### Our Abpromise to you: Quality guaranteed and expert technical support

---

- Replacement or refund for products not performing as stated on the datasheet
- Valid for 12 months from date of delivery
- Response to your inquiry within 24 hours
- We provide support in Chinese, English, French, German, Japanese and Spanish
- Extensive multi-media technical resources to help you
- We investigate all quality concerns to ensure our products perform to the highest standards

If the product does not perform as described on this datasheet, we will offer a refund or replacement. For full details of the Abpromise, please visit <https://www.abcam.com/abpromise> or contact our technical team.

### Terms and conditions

---

- Guarantee only valid for products bought direct from Abcam or one of our authorized distributors