




Product datasheet

Anti-CANT1 antibody ab224420

2 Images

Overview

Product name	Anti-CANT1 antibody
Description	Rabbit polyclonal to CANT1
Host species	Rabbit
Tested applications	Suitable for: WB, IHC-P
Species reactivity	Reacts with: Human Predicted to work with: Mouse, Rat 
Immunogen	Recombinant fragment corresponding to Human CANT1 aa 120-220. Sequence: QEENTWFSYLKKGYLTLSDSGDKVAVEWDKDHGVLESH LAEKGRGMELSD LIVFNGKLYSVDRTGVVYQIEGSKAVPWVILSDGDGTVE KGFKAEWLAV K Database link: Q8WVQ1  Run BLAST with  Run BLAST with
Positive control	WB: RT4 and U-251 MG sp cell lysates. IHC-P: Human colon tissue.
General notes	<p>Reproducibility is key to advancing scientific discovery and accelerating scientists' next breakthrough.</p> <p>Abcam is leading the way with our range of recombinant antibodies, knockout-validated antibodies and knockout cell lines, all of which support improved reproducibility.</p> <p>We are also planning to innovate the way in which we present recommended applications and species on our product datasheets, so that only applications & species that have been tested in our own labs, our suppliers or by selected trusted collaborators are covered by our Abpromise™ guarantee.</p> <p>In preparation for this, we have started to update the applications & species that this product is Abpromise guaranteed for.</p> <p>We are also updating the applications & species that this product has been “predicted to work with,” however this information is not covered by our Abpromise guarantee.</p> <p>Applications & species from publications and Abreviews that have not been tested in our own labs or in those of our suppliers are not covered by the Abpromise guarantee.</p> <p>Please check that this product meets your needs before purchasing. If you have any questions, special requirements or concerns, please send us an inquiry and/or contact our Support team</p>

ahead of purchase. Recommended alternatives for this product can be found below, as well as customer reviews and Q&As.

Properties

Form	Liquid
Storage instructions	Shipped at 4°C. Store at +4°C short term (1-2 weeks). Upon delivery aliquot. Store at -20°C long term. Avoid freeze / thaw cycle.
Storage buffer	pH: 7.20 Preservative: 0.02% Sodium azide Constituents: 40% Glycerol (glycerin, glycerine), PBS
Purity	Immunogen affinity purified
Clonality	Polyclonal
Isotype	IgG

Applications

Our [Abpromise guarantee](#) covers the use of **ab224420** in the following tested applications.

The application notes include recommended starting dilutions; optimal dilutions/concentrations should be determined by the end user.

Application	Abreviews	Notes
WB		Use a concentration of 0.04 - 0.4 µg/ml. Predicted molecular weight: 45 kDa.
IHC-P		1/50 - 1/200. Perform heat mediated antigen retrieval with citrate buffer pH 6 before commencing with IHC staining protocol.

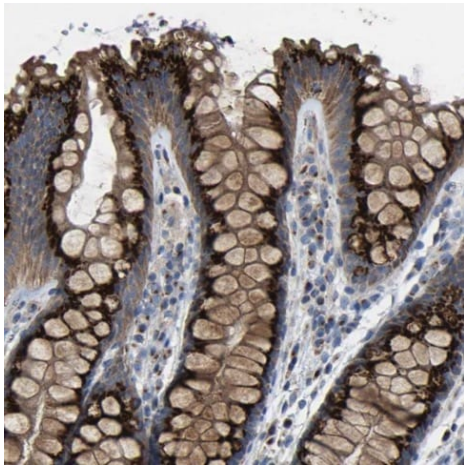
Target

Function	Calcium-dependent nucleotidase with a preference for UDP. The order of activity with different substrates is UDP > GDP > UTP > GTP. Has very low activity towards ADP and even lower activity towards ATP. Does not hydrolyze AMP and GMP.
Tissue specificity	Widely expressed.
Involvement in disease	Defects in CANT1 are the cause of Desbuquois dysplasia (DBQD) [MIM:251450]. A chondrodysplasia characterized by severe prenatal and postnatal growth retardation (less than -5 SD), joint laxity, short extremities, progressive scoliosis, round face, midface hypoplasia, prominent bulging eyes. The main radiologic features are short long bones with metaphyseal splay, a 'Swedish key' appearance of the proximal femur (exaggerated trochanter), and advance carpal and tarsal bone age. Two forms of Desbuquois dysplasia are distinguished on the basis of the presence (type 1) or absence (type 2) of characteristic hand anomalies: an extra ossification center distal to the second metacarpal, delta phalanx, bifid distal thumb phalanx, and phalangeal dislocations.
Sequence similarities	Belongs to the apyrase family.
Post-translational modifications	N-glycosylated.

Cellular localization

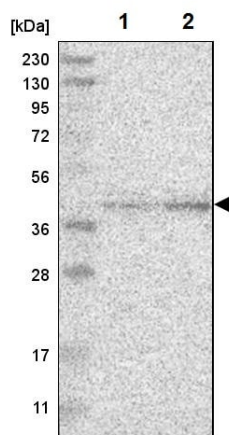
Endoplasmic reticulum membrane. Golgi apparatus > Golgi stack membrane. Processed form: Secreted.

Images



Immunohistochemistry (Formalin/PFA-fixed paraffin-embedded sections) - Anti-CANT1 antibody (ab224420)

Paraffin-embedded human colon tissue stained for CANT1 using ab224420 at 1/50 dilution in immunohistochemical analysis.



Western blot - Anti-CANT1 antibody (ab224420)

All lanes : Anti-CANT1 antibody (ab224420) at 1/100 dilution

Lane 1 : RT4 (human urinary bladder cancer cell line) cell lysate

Lane 2 : U-251 MG sp (human brain glioma cell line) cell lysate

Predicted band size: 45 kDa

Please note: All products are "FOR RESEARCH USE ONLY. NOT FOR USE IN DIAGNOSTIC PROCEDURES"

Our Promise to you: Quality guaranteed and expert technical support

- Replacement or refund for products not performing as stated on the datasheet
- Valid for 12 months from date of delivery
- Response to your inquiry within 24 hours

- We provide support in Chinese, English, French, German, Japanese and Spanish
- Extensive multi-media technical resources to help you
- We investigate all quality concerns to ensure our products perform to the highest standards

If the product does not perform as described on this datasheet, we will offer a refund or replacement. For full details of the Abpromise, please visit <https://www.abcam.com/abpromise> or contact our technical team.

Terms and conditions

- Guarantee only valid for products bought direct from Abcam or one of our authorized distributors